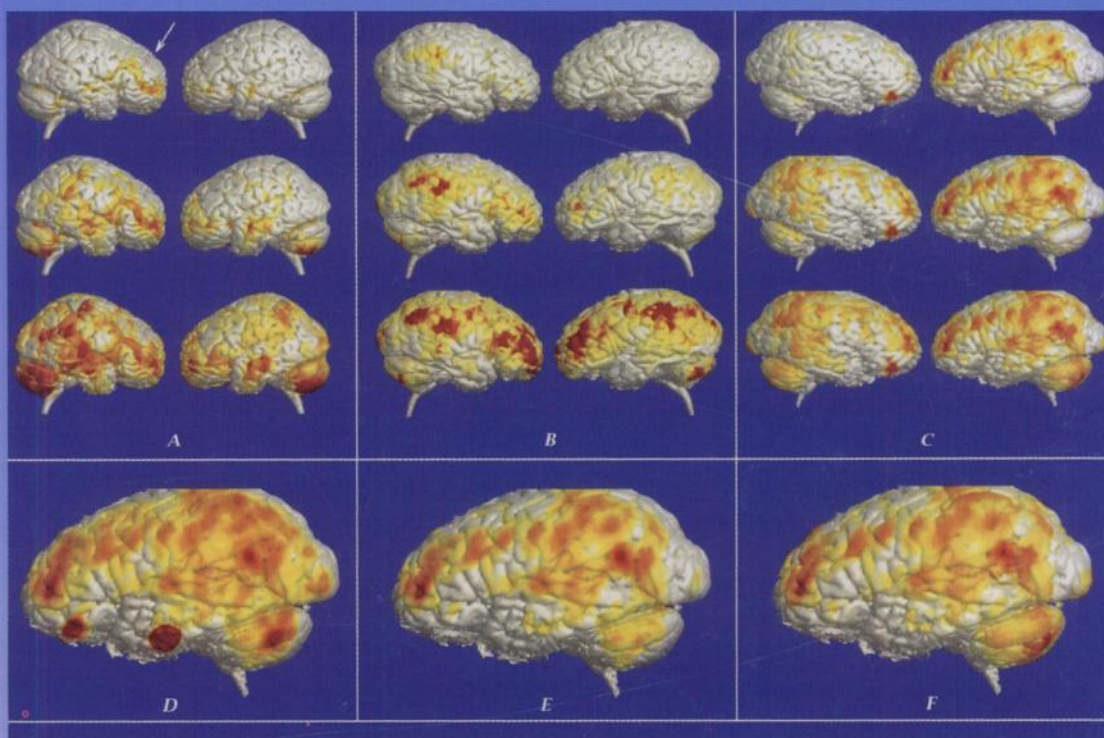

The Journal of Nuclear Medicine

JNM

Volume 38, Number 4 • April 1997



Surface color encoding of SPECT activity on a brain surface for: (A) a patient with a right frontal lobe tumor (arrow), (B) a patient with Gilles de la Tourette syndrome and (C) a patient with autistic behavior. See pages 624-629.



The Official Publication of
the Society of Nuclear Medicine, Inc.
