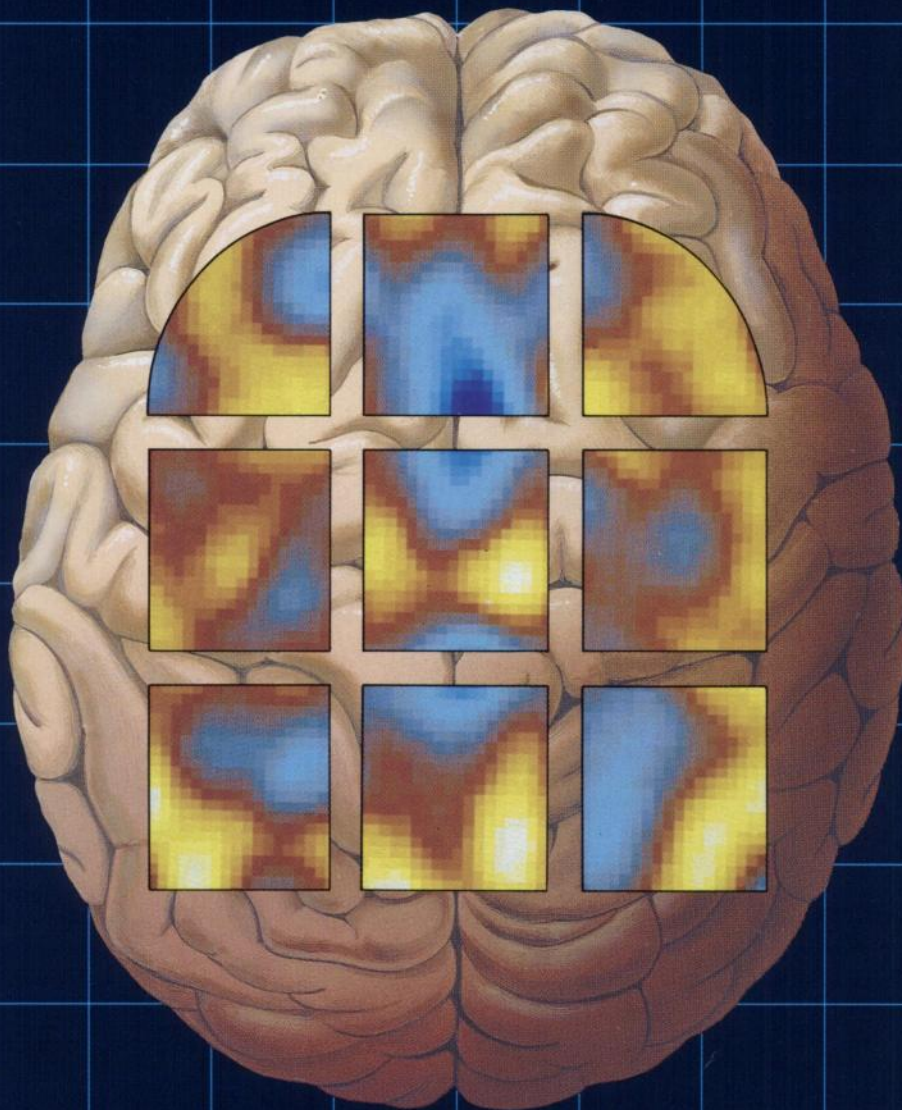


In the evaluation of stroke

# SPECTamine<sup>®</sup>

Iofetamine HCl I 123 Injection

**opens a window into  
the living brain**



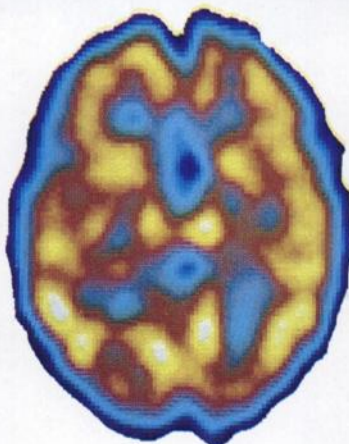
Copyright © 1989 Medi-Physics, Inc. All rights reserved.

Please see adjacent page for brief summary of prescribing information.

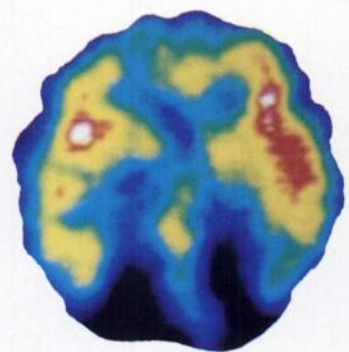
# SPECTamine<sup>®</sup>

## Iofetamine HCl I 123 Injection

- A neurotransmitter analog crosses the intact blood-brain barrier
- Concentrates in metabolically active brain cells—predominantly in the gray matter
- Provides PET-like functional brain images at a fraction of the cost



Normal brain (top left) displays relatively symmetric SPECTamine uptake by metabolically active neurons.



SPECTamine study (bottom left) demonstrates bilaterally posterior cerebral artery infarction, confirming diagnosis.

Images courtesy of New England Deaconess Hospital, Boston, Mass. Images acquired with SME 810 dedicated head unit, Strichman Medical, Equipment, Inc., Medfield, Mass.

For more information contact your Medi-Physics Territory Manager, Roche Professional Service Center or call 1-800-451-7732.

**Roche Professional Service Centers**



a subsidiary of Hoffmann-La Roche Inc.



**medi+physics<sup>®</sup>**

a subsidiary of Hoffmann-La Roche Inc.

Medi-Physics, Inc.  
140 East Ridgewood Avenue  
Paramus, NJ 07652

# SPECTamine<sup>®</sup>

## Iofetamine HCl I 123 Injection

For complete product information, consult package insert, a brief summary of which follows:

### DIAGNOSTIC—FOR INTRAVENOUS USE

**DESCRIPTION:** SPECTAMINE® (Iofetamine HCl I 123 Injection) is supplied as a sterile, apyrogenic, aqueous, isotonic sodium chloride solution for intravenous administration. Each milliliter of the solution contains 37 megabecquerels (1 millicurie) of Iofetamine HCl I 123 at calibration time, 0.15 milligram Iofetamine HCl, 0.017 millimole sodium phosphate, and 8.0 milligrams sodium chloride for isotonicity. The pH is adjusted to 4.5–6.0 with sodium hydroxide or hydrochloric acid. SPECTAMINE contains no bacteriostatic preservative and is packaged in single dose vials. The radionuclidic composition at calibration time is not less than 98.0 percent I 123, not more than 1.9 percent I 125, and not more than 0.1 percent all others (I 126 and Te 121). The radionuclidic composition at the 12-hour expiration time is not less than 96.3 percent I 123, not more than 3.5 percent I 125, and not more than 0.2 percent all others.

**INDICATIONS AND USAGE:** SPECTAMINE (Iofetamine HCl I 123 Injection) is recommended for use as a lipid-soluble brain-imaging agent. It has been shown to be useful in the evaluation of nonlacunar stroke especially when used within 96 hours of onset of focal neurological deficit. The rates of agreement between abnormal images and the neurological examination suggestive of ischemic cerebrovascular insufficiency appear to increase with the severity of symptoms. Its usefulness for the measurement of cerebral blood flow has not been established.

**CONTRAINDICATIONS:** None known.

**WARNINGS:** SPECTAMINE (Iofetamine HCl I 123 Injection) should not be administered to individuals with known hypersensitivity to sympathomimetic amines or to those individuals taking monoamine oxidase inhibitors.

### PRECAUTIONS:

#### General

Some primate (*Macaca fascicularis*) studies have shown marked eye uptake of Iofetamine HCl I 123. Localization has not been studied in the isolated human eye although *in vivo* images suggest the concentration of Iofetamine HCl I 123 is below the limit of detection. Individual human variations in pharmacokinetics of this drug and the long-term effect on the eye have not been elucidated. The contents of the vial are radioactive. Adequate shielding of the preparation must be maintained at all times.

Do not use after the expiration time and date (12 hours after calibration time) stated on the label. Potassium Iodide Oral Solution should be administered before the examination to minimize thyroid uptake of Iodine 123.

The prescribed Iofetamine HCl I 123 dose should be administered as soon as practical from the time of receipt of the product (i.e., as close to calibration time or before, if possible), in order to minimize the fraction of radiation exposure due to relative increase of radionuclidic contaminants with time.

To minimize radiation dose to the bladder, the patient should be encouraged to drink fluids and void frequently.

SPECTAMINE, as well as other radioactive drugs, must be handled with care. Appropriate safety measures should be used to minimize radiation exposure to clinical personnel. Care should also be taken to minimize radiation exposure to the patient consistent with proper patient management.

Radiopharmaceuticals should be used only by physicians who are qualified by training and experience in the safe use and handling of radionuclides, and whose experience and training have been approved by the appropriate government agency authorized to license the use of radionuclides.

#### Drug Interactions

There has been a single report of elevated diastolic hypertension (about 30 mm Hg) occurring 18 hours after administration of SPECTAMINE in a patient maintained on therapeutic doses of valproic acid.

Concurrent use of monoamine oxidase (MAO) inhibitors and compounds containing the amphetamine structure has been known to result in hypertensive crisis. Caution, therefore, should be exercised when administering SPECTAMINE (Iofetamine HCl I 123 Injection) to individuals taking medications known to potentiate the effects of sympathomimetic amines. It is recommended that SPECTAMINE not be administered during or within 14 days following administration of MAO inhibitors.

Sympathomimetic amines may affect the biodistribution of SPECTAMINE and, thus, may influence the image quality and diagnostic utility of the image.

#### Carcinogenesis, Mutagenesis, Impairment of Fertility

No long-term animal studies have been performed to evaluate carcinogenic potential, mutagenic potential or effects on fertility in male or female animals. The Ames test was negative for mutagenic effects.

#### Pregnancy Category C

Animal reproduction studies have not been conducted with SPECTAMINE. It is also not known whether SPECTAMINE can cause fetal harm when administered to a man or a pregnant woman or can affect reproduction capacity. SPECTAMINE should be given to a pregnant woman only if clearly needed.

Ideally, examinations using radiopharmaceuticals, especially those elective in nature, in women of childbearing capability, should be performed during the first few (approximately ten) days following the onset of menses.

#### Nursing Mothers

Since Iodine I 123 is excreted in human milk, formula feeding should be substituted for breast feeding if the agent must be administered to the mother during lactation.

#### Pediatric Use

Safety and effectiveness in children have not been established.

**ADVERSE REACTIONS:** In a clinical study in 93 patients with sudden onset of focal neurological deficit, e.g., cerebral infarction, 7 patients died within 2 to 55 days after administration. The deaths were considered to be a result of the disease state. Although there was no concurrent control group, statistics from historical controls support this evaluation.

There is evidence suggesting that the administration of 1 to 2 milligrams of Iofetamine HCl, the carrier in SPECTAMINE, may increase systolic blood pressure by about 10 mm Hg. In a patient with a history of hypertension, there has been a single report of sudden onset of hypertension and dizziness with transient chest tightness which occurred 5–10 minutes after administration of SPECTAMINE. One case of transient unilateral hearing loss also was reported several hours after the use of SPECTAMINE in a patient with a coincidental upper respiratory infection. As with all organic-iodine-containing compounds, the possibility of allergic reactions must be considered.

**HOW SUPPLIED:** SPECTAMINE is supplied in nominal 3.5 ml vials as a sterile, apyrogenic, aqueous, isotonic sodium chloride solution for intravenous injection. Each milliliter contains 37 megabecquerels (1 mCi) of Iofetamine HCl I 123 at calibration time.

It is available in individual vials containing 111 megabecquerels (3 mCi) of Iofetamine HCl I 123 at calibration time in a volume of 3 ml.

Single use vials are packaged in individual lead shields with plastic outer container.

**THIS PRODUCT INFORMATION ISSUED AUGUST 1988**

Medi-Physics, Inc.  
140 East Ridgewood Avenue, Paramus, NJ 07652

Circle Reader Service No. 1

# NUCLEAR MEDICINE Instruments and Accessories

■ FOR QUALITY ASSURANCE ■ PATIENT PROCEDURES  
■ RADIATION MONITORING AND PROTECTION



TM, Victoreen, Inc.

New! COMP-U-CAL II™  
Computerized Radioisotope Calibrator  
with Built-In Moly-Shield



Cardiovascular  
Stress System



Dynamic Cardiac Phantom



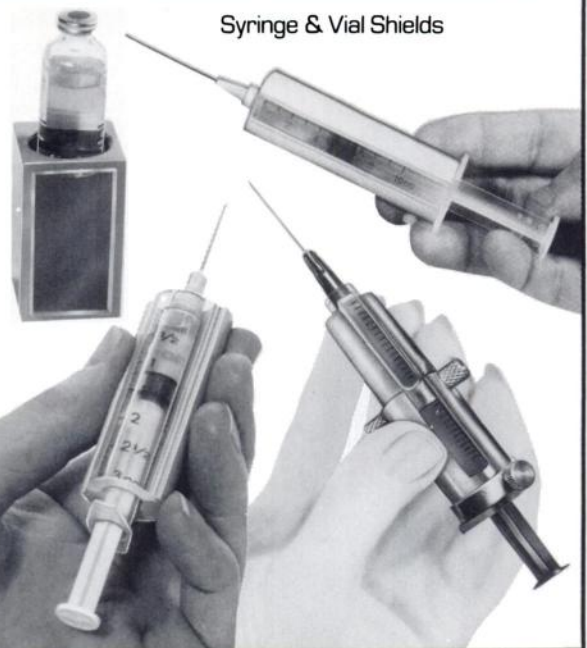
PET/SPECT  
Phantom



Deluxe Wipe Test Counter



Multi-Purpose GM  
Survey Meter



Syringe & Vial Shields

**WE CARRY A COMPLETE LINE OF  
NUCLEAR MEDICINE PRODUCTS**

For more  
information on  
these and other  
Nuclear Medicine  
products, request  
Catalog M-35

## NUCLEAR ASSOCIATES



Division of VICTOREEN, INC.  
100 VOICE ROAD • P.O. BOX 349  
CARLE PLACE, NY 11514-0349 U.S.A.  
(516) 741-6360 • FAX (516) 741-5414  
A Member of THE TALBEX GROUP, PLC.

Circle Reader Service No. 2

**For the newest ideas in nuclear medicine, look to the oldest national nuclear pharmacy.**



**You may be under-estimating the cost of your radiopharmaceuticals. By 100 percent.**

**If you estimate that it costs \$10.00 to prepare a dose, think again. According to a recent independent study, it's more likely to be \$20.00 when you add in the associated costs of compounding, quality control, record keeping, storage, waste disposal and ordering.**

**Cost is just one of the components of Syncor value. When you rely on Syncor, you also receive reliable delivery, QC documentation, 24-hour availability, regulatory support, management software, and much more.**

**Syncor value means providing our customers with the best service package we possibly can. And that is a benefit too valuable to ignore.**

Circle Reader Service No. 10

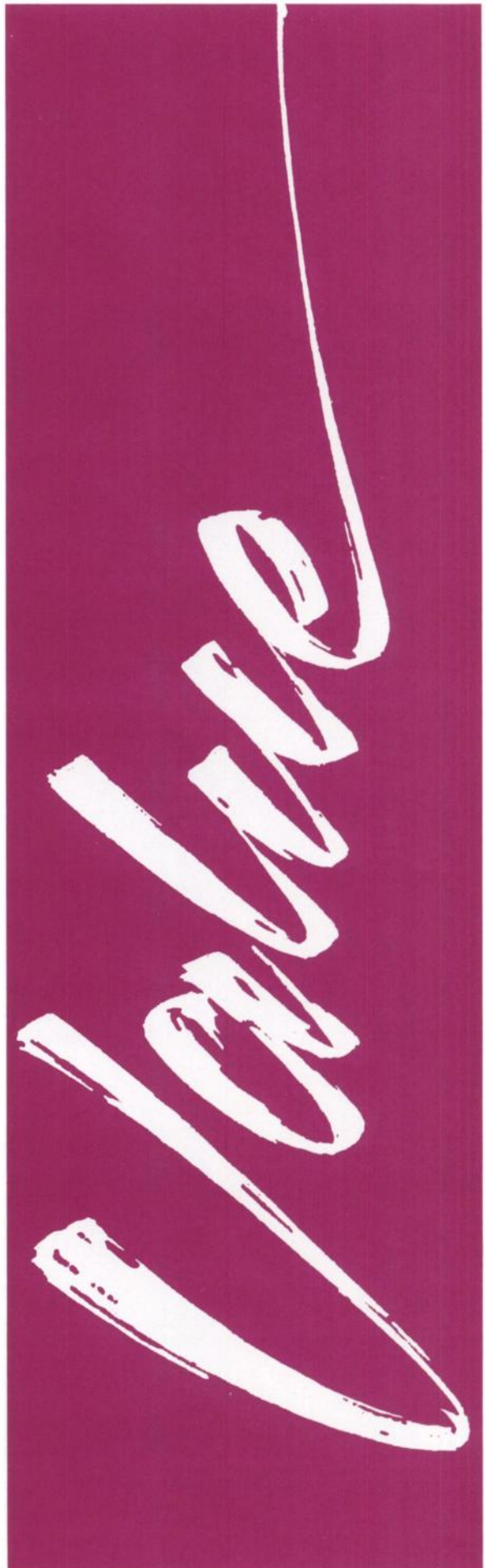


*When Caring Is Called For*

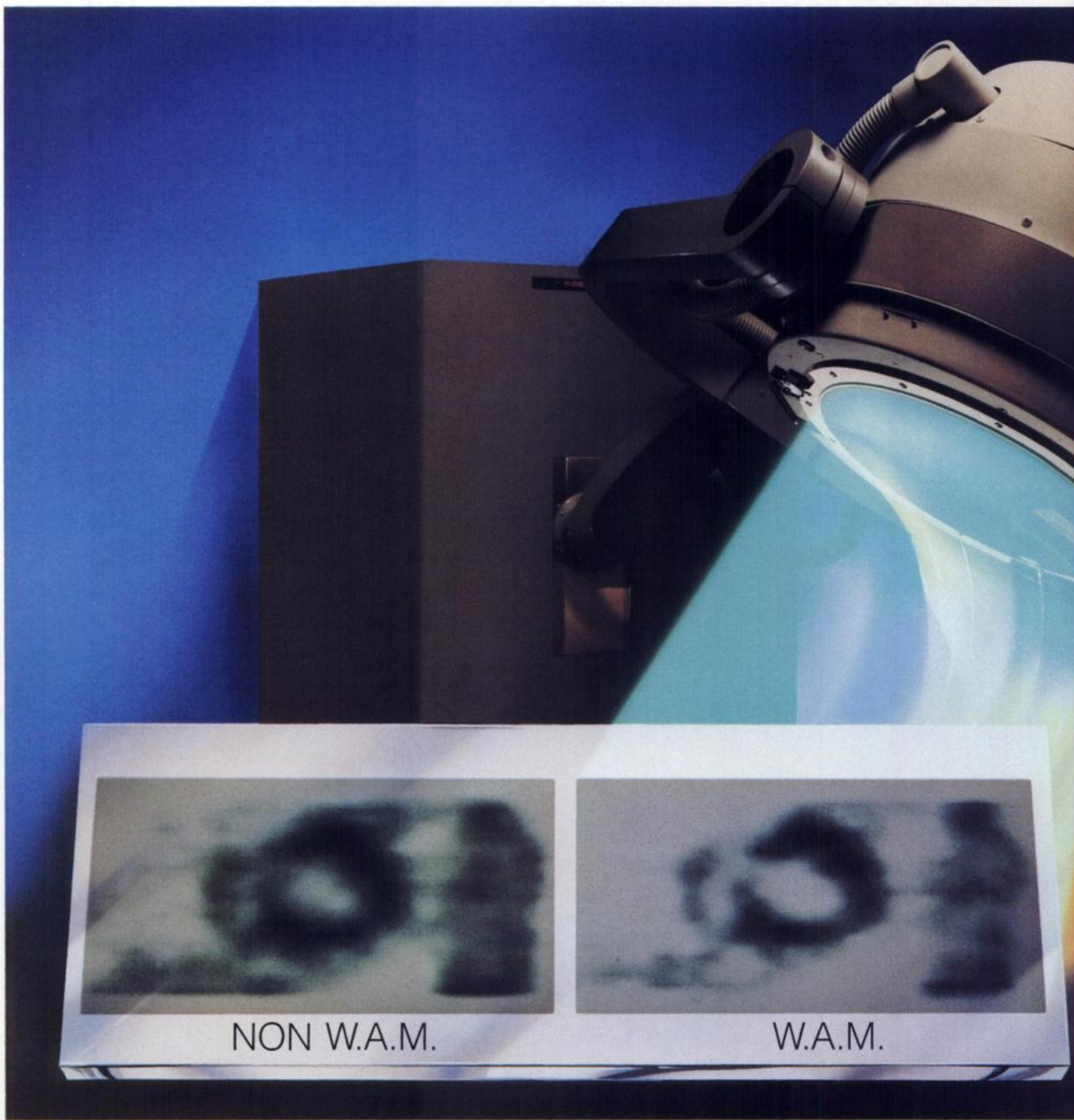
**Syncor International Corporation**

Chatsworth, California 91311

(818) 886-7400 • (800) 999-9098



# SIEMENS



Unretouched Thallium 201 SPECT Reconstruction Images. Clinical Impression: W.A.M. Invaluable for Thallium SPECT Imaging.

A to Z... our technical edge gets sharper! From Anger, to DIGITRAC™, to ZLC™, we've never stopped improving the Gamma Camera!

And now...

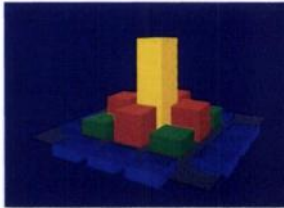
## **W.A.M.® The Cutting Edge in SPECT!**

### **Up Front Technology!**

The Weighted Acquisition Module is NOT a software package. It is an exclusive accessory for all Siemens Rotational cameras that interfaces directly to the DIGITRAC detector system.

### **Where the WHOLE Image Counts!**

W.A.M. improves upon less efficient, conventional pre-selected energy windowing. The proprietary W.A.M., "realtime spatial filtering signal processor," uses *each* event weighted value, from *every* detected photon, to produce a *complete* image.



**For Improved Image Contrast!** By obviating scatter corruption, W.A.M. increases diagnostic confidence with superior image contrast and acquisition throughput by providing 2 simultaneous data sets.

### **W.A.M. When your image counts!**



DELTAVISION, DELTASTORE, MicroDELTA, MaxDELTA, BASICAM, LEM +, ORBITER, BODYSCAN, the PET system and W.A.M.

### **Siemens Medical Systems, Inc.**

2000 Nuclear Drive Des Plaines, IL 60018 312-635-3259

**Siemens ... technology with integrity.**

**AMR's AccuSync provides R-wave detection with precision and reliability. The finest R-wave Triggering device available for computerized gated cardiac studies.**



## AccuSync-5L Features

- Isolation Amplifier for Patient Safety.
- Digital CRT Monitor.
- ECG Strip Chart Recorder.
- Heart Rate/R-R int.
- Trigger Pulse LED.
- Trigger Control for Ease of Lead Placement and Precise Location of Trigger Pulse.
- R-Trigger Output, Compatible with all Computers.
- No Delay.
- ECG Output
- Playback Mode. (optional)
- Event Marker. (optional)
- Audio Indicator.

### MODEL

AccuSync-6L



### FEATURES

All AccuSync-5L features with the exception of the Strip Chart Recorder.

AccuSync-IL



All AccuSync-5L features with the exception of Digital CRT Monitor.

AccuSync-3R



All AccuSync-IL features with the exception of the Strip Chart Recorder and Playback Mode.

AccuSync-4R



All Accu Sync-3R features with the exception of the Heart Rate/R-R int. display.

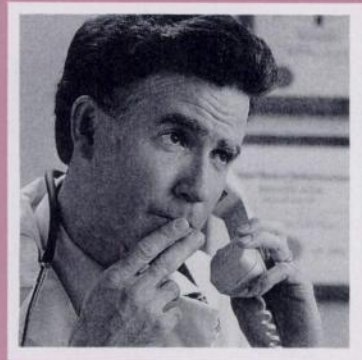


**ADVANCED  
MEDICAL RESEARCH CORP.**

148 Research Drive/PO. Box 3094  
Milford, CT 06460/Telephone: (203) 877-1610

Circle Reader Service No. 21

## WHY PET PLANNING BEGINS WITH SCANDITRONIX



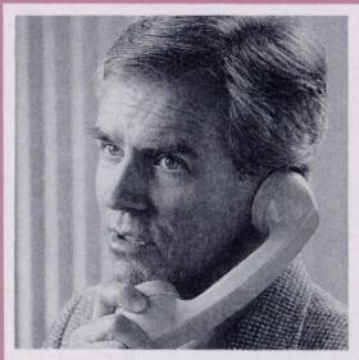
*"Maybe I'm  
calling you too soon."*

*"But I'm not sure if  
we're ready for PET."*

*"I still have a lot of questions –  
costs, staffing, reimbursement,  
clinical utility."*

*"Maybe I should talk to a  
PET expert before I talk to you."*

*"But I don't know if we're really  
ready to buy a PET system."*



*"If you're thinking about  
PET, it isn't too soon."*

*"We can help you find out."*

*"We can help you  
find the answers."*

*"We are PET experts.  
We've been in the  
business 20 years."*

*"That's OK.  
Let's talk about PET – and  
worry about systems later."*

Call Scanditronix today.  
We'll talk with you, not at you.

 **SCANDITRONIX, INC.®**

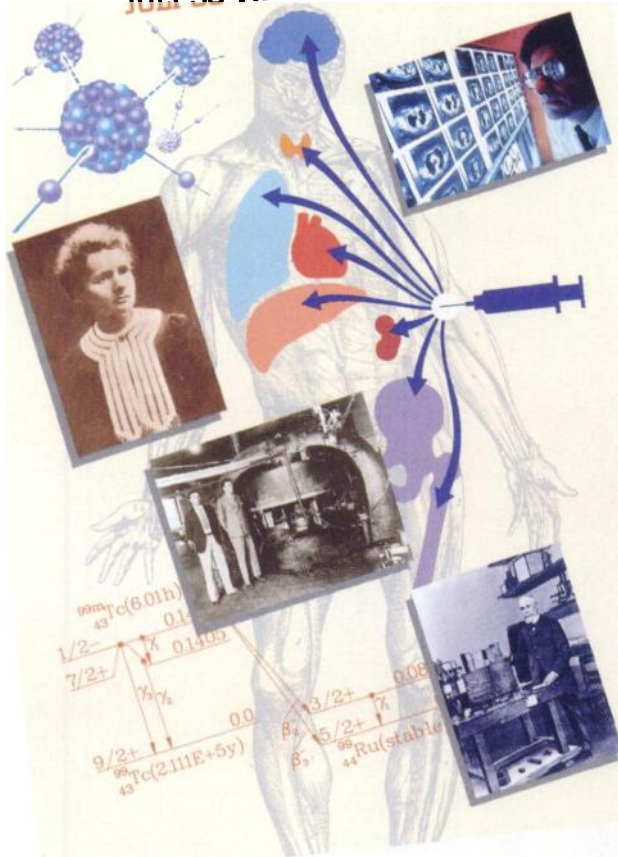
106 Western Avenue, P.O. Box 987, Essex, Massachusetts 01929  
Telephone: 508-768 6994, Telex: 499-3087 NUCLEX, Fax: 508-768 7380

Circle Reader Service No. 76



# CELEBRATE NUCLEAR MEDICINE WEEK

**NUCLEAR MEDICINE WEEK**  
JULY 30-AUGUST 5, 1989



This year Nuclear Medicine Week will be observed from July 30–August 5. Nuclear Medicine Week, sponsored by The Society of Nuclear Medicine and Technologist Section, was developed to educate the general public and health care professionals of the diagnostic and treatment capabilities of nuclear medicine.

Nuclear Medicine Week is the only time during the year that the entire nuclear medicine community unites to present its message. It is an excellent opportunity to reach out to those who could benefit from nuclear medicine; it is also a most opportune time to promote your facility to referring physicians and potential patients.

A new poster, button and sticker have been designed to help you promote this worldwide event in your community. In addition, a set of guidelines with suggestions to increase participation is available from the Society. We encourage all those involved in nuclear medicine to join with us to increase the awareness and improve the perception of nuclear medicine.

To order posters, buttons and stickers for your institution, or to receive a guidelines packet, simply fill out the order form on the facing page.



# CELEBRATE NUCLEAR MEDICINE WEEK

July 30 – August 5, 1989

The following materials are available  
for promoting Nuclear Medicine Week in your area.

One poster, sticker, and a button, all in full color, have been designed for  
this year.

**Posters** — \$5.00 each, 4 – 9 posters are \$4.50 each, 10 or more \$4.00 each.

I would like \_\_\_\_\_ posters × \$ \_\_\_\_\_ \$ \_\_\_\_\_

**Buttons** — \$1.00 each

I would like to order \_\_\_\_\_ buttons \$ \_\_\_\_\_

**Stickers** — \$.15 each (same design as the button)

I would like to receive \_\_\_\_\_ stickers.  
(Minimum order is 10 stickers) \$ \_\_\_\_\_

Total \$ \_\_\_\_\_

I would like to order a free set of Guidelines for promoting  
Nuclear Medicine Week.

*Payment must be enclosed with your order. Payments must be made in U.S. dollars drawn on  
U.S. banks. No foreign funds will be accepted. Make checks payable to*

**The Society of Nuclear Medicine**

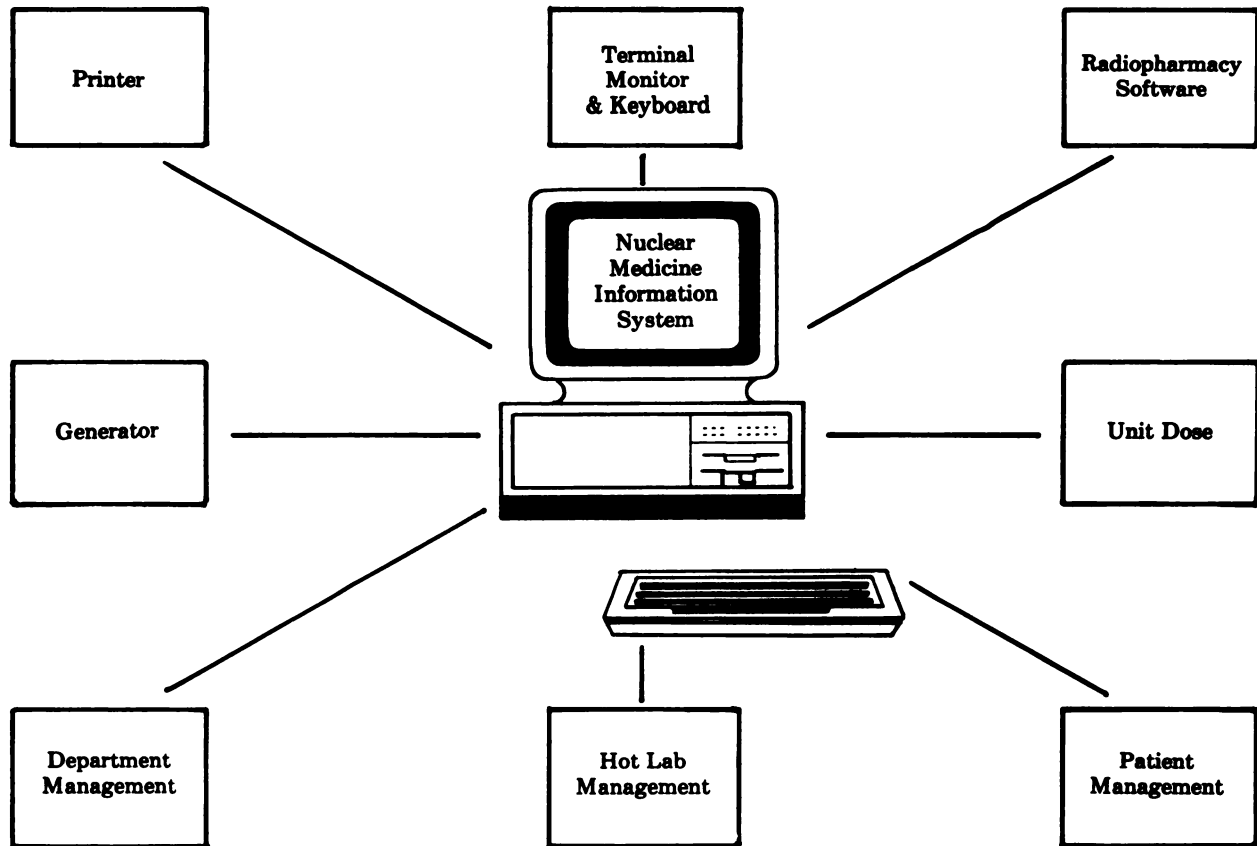
Orders will be sent out by 1st class mail or UPS. *Orders received after July 3, 1989 will be assessed a 15%  
surcharge, payable before shipment, to ensure timely delivery.*

Name	Address	
Hospital/Company	City	
Telephone	State	Zip

Please return this form to:  
**Nuclear Medicine Week**  
**The Society of Nuclear Medicine**  
136 Madison Avenue,  
New York, NY 10016-6760

# NUCLEAR MEDICINE INFORMATION SYSTEMS<sup>®</sup>

(Software Package)



**IT'S TIME  
TO TAKE  
THE NEXT  
STEP . . . . .**

This Program and a Personal Computer is the answer to meeting your management needs . . . and much more.

**NUCLEAR MEDICINE CONSULTING FIRM**  
P. O. Box 824  
Greenville, PA 16125  
(412) 932-5840

Circle Reader Service No. 14

#### **HOT LAB MANAGEMENT:**

- Syringe Labels
- Disposal Records
- Inventory Control
- Unit Dose Database
- Generates Daily Reports
- Generator and Kit Preparation
- Ordering & Receiving Unit Doses
- Decays All Radiopharmaceuticals and Doses
- Performs Thin Layer Chromatography
- Calculates Linearity & Constancy Tests
- Radioactive Shipment Receiving Reports

#### **DEPARTMENT MANAGEMENT:**

- Teaching File
- Reminder File
- Stores Department Data
- Health Physics Program
- Calculates Budgetary Information
- Calculates Department Statistics
- Productivity & Efficiency Programs
- Stores Department's Procedure Manual
- Quality Assurance & Quality Control Programs

#### **PATIENT MANAGEMENT:**

- Patient Scheduling
- Monthly and Yearly Statistics
- Networking System Availability
- Adaptable to Department's Needs
- Creates Hard Copy of Patient Doses
- Inhouse, Unit Doses, and Central Pharmacy
- Displays Data Numerically &/or Graphically
- Generates Teaching File of Interesting Cases
- Analyzes Quality Assurance for JCAH Documentation

# New excellence in dose calibration. . .

Now from Atomic Products — the first dose calibrators ever to earn the **ATOMLAB** nameplate and the first in the industry to carry a full two-year warranty! The **ATOMLAB 100** Dose Calibrator features automatic zeroing and ranging, push-button ease of operation and readings in units of Curies or Becquerels. The **ATOMLAB 200** is a complete system with all the features of the 100 plus automatic inventory control, radiopharmaceutical quality assurance, future dose preparation, dot matrix plain paper printer and much more. Call or write for complete details on the **ATOMLAB 100** and **200**!

*ATOMLAB Dose Calibrators . . . with unsurpassed repeatability, accuracy, linearity, geometry and an unprecedented 2-year warranty, are the right answer for nuclear medicine!*



**Atomic**  
**Products Corporation**

ATOMLAB DIVISION • ESTABLISHED 1949  
P.O. BOX R, SHIRLEY, NEW YORK 11967-0917 U.S.A.  
TEL: (516) 924-9000 • FAX: (516) 924-9241  
TELEX: 797566 • TWX: 51022-80449 ATOMLAB CTCH

**ATOMLAB 100 & 200**



# NEW TITLES

■ **MIRD Primer for Absorbed Dose Calculations, edited by Robert Loevinger, Thomas F. Budinger, and Evelyn E. Watson.**

The only publication that combines all the previously MIRD absorbed dose estimates in one volume, the *MIRD Primer* provides a fresh explanation of the MIRD schema, along with examples to illustrate applications. The *Primer* contains revised and updated MIRD dose estimate reports and a detailed explanation of the MIRD method. The *MIRD Primer* also contains a substantive index, a detailed glossary and list of symbols. 1988. 128 pp. Hardcover. \$35 for members; \$50 for non-members.

■ **SPECT: A Primer, by Robert J. English, CNMT, and Susan E. Brown, CNMT.**

Now in its fourth printing, the *Primer* answers technologists' fundamental questions about SPECT, as both a reference and an extension of any manufacturer's operating manual. It is regarded by many as one of the *the* two handbooks on SPECT. 1986. 148 pp. Paper. \$15 members; \$17 non-members.

■ **Fundamentals of Nuclear Medicine, 2nd Edition, edited by Naomi P. Alzaraki, MD, and Fred S. Mishkin, MD.**

Designed as a basic text to acquaint practitioners and students with the possibilities and limitations of nuclear medicine in detecting and evaluating common disorders, this completely revised and updated edition is essential to all those who want an understanding of this rapidly evolving technology. 1988. 256 pp. Paper. \$15; accredited instructors may purchase a minimum of 10 copies at \$4 each.

■ **The Scintillation Camera, edited by Guy Simmons, PhD.**

Targeted to advanced technologists, physicians, and other scientists, this book provides, in a single volume, easily accessible state-of-the-art information on all aspects of the scintillation camera, from instrument selection and performance evaluation to operation monitoring in the clinical environment. *The Scintillation Camera* should be especially helpful to those teaching the principles of scintillation cameras. 1988. 160 pp. Paper. \$30 members; \$35 non-members.

**SOLD OUT, NEW EDITION APRIL 1989**

	Member	Non-Member	Quantity	Sub-Total
MIRD Primer for Absorbed Dose Calculations . . . . .	35.00	50.00	___	___
The Scintillation Camera . . . . .	30.00	35.00	___	___
Fundamentals of Nuclear Medicine, 2nd Edition (\$4.00 in bulk quantities of 10 or more to accredited instructors) . . . . .	15.00	15.00	___	___
SPECT: A Primer . . . . .	15.00	17.00	___	___
Postage & Handling: Add \$2.50 per copy* . . . . .	___	___	___	___
Publication Total . . . . .	___	___	___	___

\*Contact The Society of Nuclear Medicine for bulk rates.

Name \_\_\_\_\_

Institution \_\_\_\_\_

Address \_\_\_\_\_

City \_\_\_\_\_

State/Province \_\_\_\_\_

VISA # \_\_\_\_\_  MasterCard # \_\_\_\_\_

Signature \_\_\_\_\_

Purchase order or prepayment in US funds drawn on US banks required. Make checks payable to: *The Society of Nuclear Medicine*. Mail the enclosed order form, together with check or purchase order to: **The Society of Nuclear Medicine, Book Order Dept.** 136 Madison Avenue, New York, NY 10016-6760

# Fundamentals of Nuclear Medicine

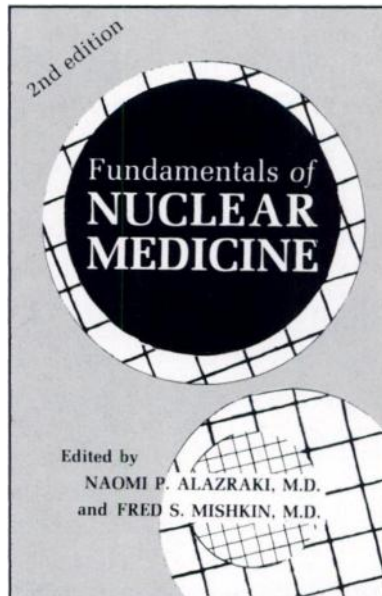
## 2nd Edition

Edited by  
**Naomi P. Alazraki, MD**  
and  
**Fred S. Mishkin, MD**

**Fundamentals of Nuclear Medicine, 2nd Edition**, provides physicians, physicians-in-training, scientists, and technologists with a comprehensive introduction to the basic principles of nuclear medicine, including the most recent advances in this fast-changing field.

Following the format of the acclaimed first edition, the editors have revised and expanded each chapter, adding major new sections on PET imaging, diagnostic decision making, parathyroid and adrenal imaging, and bone density measurement. In addition, several new scan images and graphs serve to illustrate the text.

**Fundamentals of Nuclear Medicine** fills the need for a current basic text to acquaint practitioners and students with the possibilities and limitations of nuclear medicine in detecting and evaluating common disorders. It is essential to all those who want an understanding of this rapidly evolving technology as it emerges from the investigative to the clinical stage.



**Completely Revised  
and Updated**

### Table of Contents

#### Radiation in Perspective

1. Basic Science of Nuclear Medicine  
Radiation and Dose  
Radiation Effects  
Radiopharmaceuticals  
Imaging of Radiation
2. The Diagnostic Process and Nuclear Medicine  
Sensitivity, Specificity, and Predictive Value

#### Organ Imaging with Radionuclides

3. Endocrinology
4. Cardiovascular System
5. Pulmonary System and Thromboembolism
6. Liver and Gastrointestinal Tract
7. Biliary Tract
8. Genitourinary Tract
9. Skeletal System
10. Central Nervous System

#### Imaging Disease Process

11. Trauma
12. Inflammatory and Infectious Process
13. Cancer

#### Nonimaging Diagnostic Techniques

14. Nonimaging Procedures

#### Appendix

#### Glossary

#### Index

### To Order:

Single copies of *Fundamentals of Nuclear Medicine*, 2nd Edition, are available for \$15.00 plus \$2.50 postage and handling for each book ordered. Payment must be made in U.S. funds drawn on U.S. banks only. For payment made in U.S. funds, but drawn on a foreign bank, add a bank processing fee of \$4.50 for Canadian bank drafts or \$40.00 for all other foreign bank drafts. Check or purchase order must accompany all orders. Make checks payable to: The Society of Nuclear Medicine.

**SPECIAL STUDENT OFFER:** Bulk quantities of *Fundamentals of Nuclear Medicine*, 2nd Edition, are available for instructors to introduce medical and technologist students to nuclear medicine. Accredited instructors may purchase a minimum of 10 copies at \$4.00 each (includes shipping).

**The Society of Nuclear Medicine**  
136 Madison Avenue, Dept. 588J  
New York City, NY 10016-6760

# **SOCIETY OF NUCLEAR MEDICINE**

**Officially Endorsed  
Group Insurance Plans**

**The Society of Nuclear Medicine endorses six different group insurance plans. These programs provide comprehensive benefits at economical group rates.**

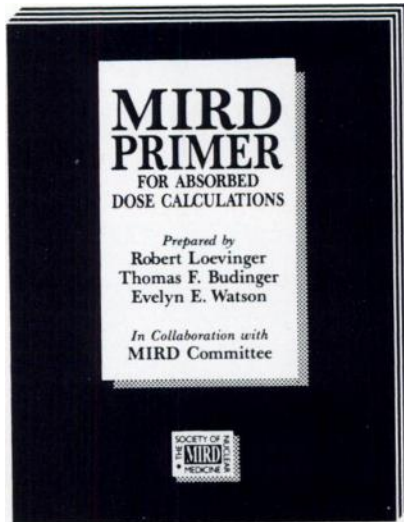
- GROUP DISABILITY INCOME PLAN
- MAJOR MEDICAL INSURANCE
- \$1,000,000 CATASTROPHE  
MAJOR MEDICAL INSURANCE PLAN
- GROUP LIFE INSURANCE PLAN
- PROFESSIONAL LIABILITY INSURANCE  
FOR THE TECHNOLOGIST SECTION
- 50+ LONG TERM CARE, A NURSING HOME  
& HOME HEALTH CARE PLAN

***FOR MORE DETAILS ON THESE PLANS ...***

*Complete the Reader Services Card at the back of your Journal.*

*Or call **TOLL-FREE**: 1-800-323-2106*

*Illinois residents: 1-312-803-3100*



# MIRD PRIMER

## *For Absorbed Dose Calculations*

*Prepared by*  
**Robert Loevinger  
Thomas F. Budinger  
Evelyn E. Watson**

### *In Collaboration with the MIRD Committee*

The MIRD Primer for Absorbed Dose Calculations was prepared by the MIRD Committee to provide a fresh explanation of the MIRD schema with examples designed to illustrate applications.

The text is divided into four parts: the Primer, Examples of the Use of the MIRD Schema, The Collected Absorbed Dose Estimate Reports, and Appendices.

**Part 1** offers a detailed explanation of the MIRD method.

**Part 2** amplifies this explanation with examples designed to illustrate applications beginning with relatively simple problems and working up to more complex ones.

**Part 3** contains previously published MIRD absorbed dose estimates, now readily assembled in one book, that have been revised and edited for this publication.

**Part 4** contains three appendices: List of MIRD Pamphlets, A Revised Schema for Calculating the Absorbed Dose from Biologically Distributed Radionuclides, and Kinetic Models for Absorbed Dose Calculations.

The MIRD Primer also contains a substantive index, a detailed glossary and list of symbols, and for your handy reference calculation tables on the inside front and back covers; 128 pp.

**This text is an invaluable reference tool for everyone who is involved in nuclear medicine research and practice!**

---

#### **ORDER NOW!**

**\$35.00 per copy for members; \$50.00 for non-members. Add \$2.50 postage and handling for each book ordered.** If ordering in bulk quantities, contact the Order Dept. for postage fees. Prepayment is required in US funds drawn on US banks only. No foreign funds are accepted. For payments made in US dollars but drawn on a foreign bank, add a bank processing fee of \$4.50 for Canadian bank drafts or \$40.00 for all other foreign bank drafts. Check or purchase order must accompany all orders. Make checks payable to:

**The Society of Nuclear Medicine, Book Order Dept.  
136 Madison Avenue, New York, NY 10016-6760  
(212)889-0717**



# ***Educate your patients with SNM's Patient Information Pamphlets***

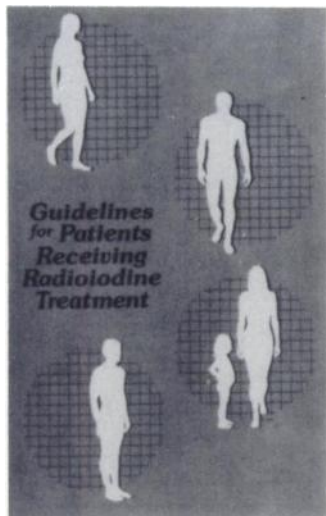
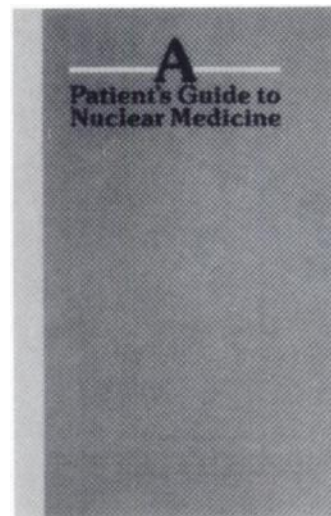
## **A Patient's Guide to Nuclear Medicine**

Well illustrated, this 16-page pamphlet explains what nuclear medicine is, how the procedures are performed, and how they can help in the early detection of disease.

Divided into 3 sections, the guide opens with a general overview of nuclear medicine. A question-and-answer section follows, addressing such topics as safety, the benefits of nuclear medicine procedures, pre- and post-instructions, and testing of pregnant women and children. The third section explains some of the more commonly performed procedures such as bone, liver, lung, heart, and thyroid uptake scans.

**16 pp; 5½ × 8½; in 2 colors;**

**25¢ per pamphlet; minimum order: 100 copies**



## **Guidelines for Patients Receiving Radioiodine Treatment**

Prepared in collaboration with the U.S. Nuclear Regulatory Commission, this 8-page pamphlet answers patients' questions about home care after receiving radioiodine treatment for thyroid conditions.

Easy-to-read language outlines important precautions patients can follow to help reduce radiation exposure to others. It also contains a checklist that physicians can review with their patients to determine which guidelines are appropriate for them and how they should be followed.

**8 pp; 5½ × 8½; in 2 colors;**

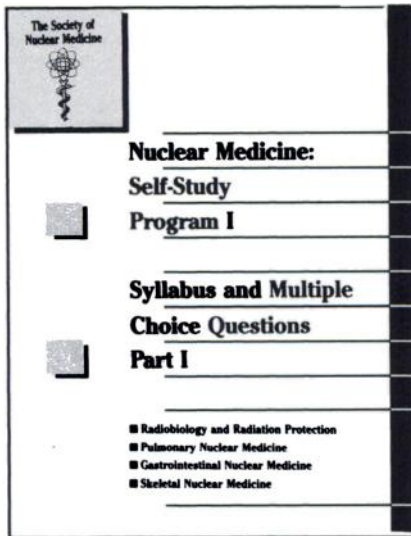
**30¢ per pamphlet; minimum order: 25 copies**

**Healthcare professionals in private practice, hospitals, and clinics will find that these pamphlets provide a brief, attractive, and inexpensive way to educate patients and their families about the importance and safety of nuclear medicine procedures.**

**TO ORDER:** Single copies are available for review at \$1.50 each. All prices include postage and handling. Prepayment required in U.S. funds drawn on U.S. banks only. Make checks payable to: The Society of Nuclear Medicine. *Prices are in U.S. dollars and subject to change without notice.*

**THE SOCIETY OF NUCLEAR MEDICINE  
Book Order Dept., 136 Madison Avenue, New York, NY 10016-6760**

# Nuclear Medicine: Self-Study Program I



**Syllabus and Questions—**Emphasize essential, clinically related topics, with annotated references to more detailed information on each subject. Questions are formulated to approximate the level of difficulty of those found in specialty exams.

## NUCLEAR MEDICINE: SELF-STUDY PROGRAM I

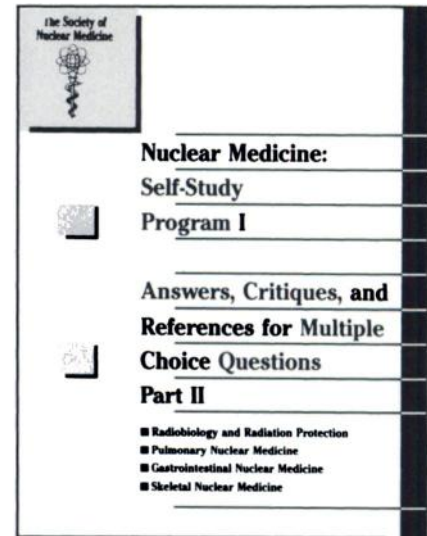
Edited by Barry A. Siegel, MD,  
and Peter T. Kirchner, MD

SECTION ONE:  
**Radiobiology and Radiation Protection**  
Richard L. Witcofski, PhD,  
Chairman

SECTION TWO:  
**Pulmonary Nuclear Medicine**  
Daniel R. Biello, MD, (Deceased),  
Co-Chairman  
Tom R. Miller, MD, PhD,  
Co-Chairman

SECTION THREE:  
**Gastrointestinal Nuclear Medicine**  
Alan H. Maurer, MD,  
Chairman

SECTION FOUR:  
**Skeletal Nuclear Medicine**  
Edward B. Silberstein, MD,  
Chairman



**Answers and Critiques—**Correct answer for each question is followed by a discussion of the rationale for correct and incorrect answers. Additional tables, illustrations and references ensure that you gain an in-depth understanding of each topic.

The Society of Nuclear Medicine presents *Nuclear Medicine: Self-Study Program I*, the first volume of a comprehensive series that will cover all areas of nuclear medicine. Nowhere else will you find the most recent innovations in the field, and nowhere else will you find the material in such an easy to use and understandable format.

*Nuclear Medicine: Self-Study Program I* is the successor to the highly acclaimed *Nuclear Medicine Review Syllabus*, which reviewed the major advances in nuclear medicine in the 1970's. *Nuclear Medicine Review Syllabus*, under the editorship of Peter Kirchner, MD, sold 4,000 copies, more than any other SNM title for nuclear medicine physicians.

*Nuclear Medicine: Self-Study Program I* covers the advances in nuclear medicine since the publication of the *Nuclear Medicine Review Syllabus*, and features many of the same contributors.

You will find that *Nuclear Medicine: Self-Study Program I* is unsurpassed in helping you keep abreast of the latest advances and is an excellent resource for your teaching responsibilities. It is, of course, invaluable as preparation for board and recertification exams.

If you are a physician, scientist or technologist who needs to review his knowledge of nuclear medicine, or one who wants to know more about this cutting edge of medicine, order your copy today.

## ACT NOW!

The Society of Nuclear Medicine  
SSPI  
136 Madison Avenue  
New York, NY 10016-6760

Name \_\_\_\_\_

Institution \_\_\_\_\_

Address \_\_\_\_\_

City/State/Province \_\_\_\_\_ Zip/Postal Code \_\_\_\_\_

\$90 Member  \$115 Non-member  Check Enclosed

\$75 Resident/Technologist  Charge to Credit Card  Purchase Order Enclosed  
(Enclose documentation)

Visa \* \_\_\_\_\_ Expiry Date \_\_\_\_\_

MasterCard \* \_\_\_\_\_ Expiry Date \_\_\_\_\_

Signature \_\_\_\_\_

# IN A FOG??

***using aerosols to determine the patency of the pulmonary airway system? Use a gas (that's what the airway system is for), and Xenon (127 or 133) are gases which are safe, economical and easy to administer with the XENAMATIC™ 3000.***

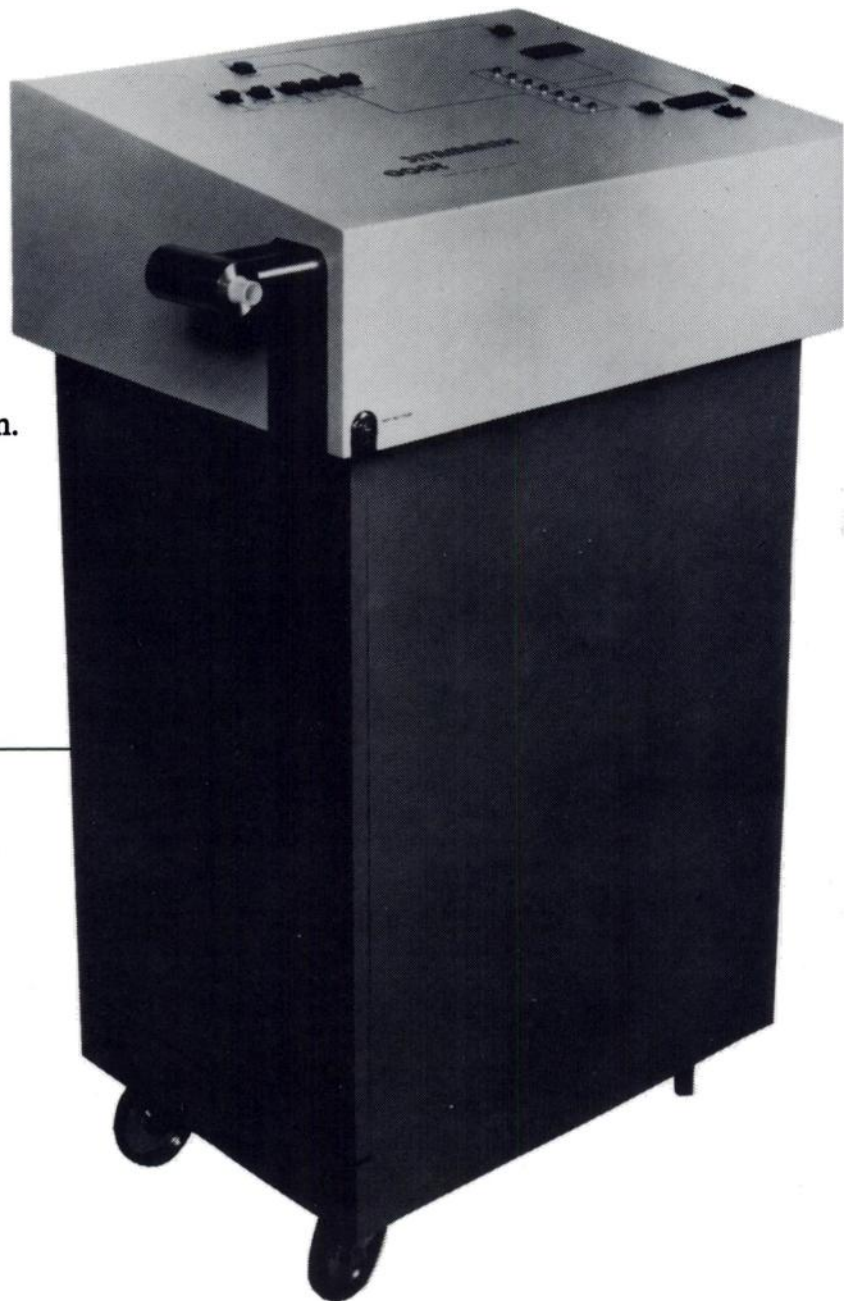
---

- Shielded for Xe 127 and Xe 133 (radiation profile available on request).
  - World's only system that allows you to study patients on Ventilators.
  - Largest and most efficient Xenon trap with a built-in monitor alarm system.
  - Built-in O<sub>2</sub> monitor with digital display and control.
  - A rebreathing system that saves Xenon.
  - Low breathing resistance so you can study sick patients.
  - Semi-automatic operation.
  - Remote Control Capability.
- 

Get out of the FOG-making business, and call today for more information on putting gases where gases belong, with the XENAMATIC.

Also available, Model 2000.

*For more information, please call or write,*



**DIVERSIFIED DIAGNOSTIC PRODUCTS, INC.**

11603 Windfern  
Houston, TX 77064

713-955-5323

# *Chromatography of Technetium-99m Radiopharmaceuticals*

## *—A Practical Guide*

*By Philip J. Robbins*

To provide up-to-date information about the most accurate procedures for ensuring quality control of radiopharmaceuticals, The Society of Nuclear Medicine has published *Chromatography of Technetium-99m Radiopharmaceuticals—A Practical Guide*.

This important manual offers readers a collection of miniaturized chromatographic methods for the rapid and precise determination of the radiochemical purity of commonly used Tc-99m radiopharmaceuticals.

Topics covered include the nature and source of impurities, principles and classic techniques of chromatography, methods for counting miniature chromatographic strips, and pitfalls of miniature methods and how to avoid them. Also contained herein is a listing of each radiopharmaceutical with the USP criteria for radiochemical purity, typical scans of impure products, and standards and inter-laboratory comparisons for miniaturized systems.

Prepared to aid nuclear medicine personnel in implementing voluntary quality-assurance programs, the material may also be used as a training resource for individuals preparing for professional licensure and certification.

### **Ordering Information:**

Add \$2.50 postage and handling for each book ordered. Prepayment required in U.S. funds drawn on U.S. banks only. For payments made in U.S. dollars, but drawn on a foreign bank, add a bank processing fee of \$4.50 for Canadian bank drafts or \$40.00 for all other foreign bank drafts. Check or purchase order must accompany all orders. Make checks payable to: The Society of Nuclear Medicine. *Prices are in U.S. dollars and are subject to change without notice.*



*8½ × 11" softcover, 48 pages*

*\$ 8.00 SNM members;*

*\$10.00 non-members*

*Publication Date: January 1984*

**The Society of Nuclear Medicine, Book Order Dept. 1287J,  
136 Madison Avenue, New York, NY 10016-6760, (212)889-0717**

# **BUILD THE FUTURE'S MOST ADVANCED NUCLEAR MEDICINE DEPARTMENT TODAY...**

# **WITH TOMORROW'S TECHNOLOGY.**

**Announcing the new  
Capintec CAPTURA™ System.**

**A totally integrated, modular  
system of outstanding product  
innovations and comprehensive  
department management  
capabilities.**

**Designed to do the job today...with an eye on  
tomorrow.** The new Capintec CAPTURA System  
won't become obsolete the moment your department  
needs change...or expand, whether you purchase  
them separately, or integrate them as part of our new  
System. At the core of our System is the host IBM  
Personal System/2 Computer® with the latest 286  
technology, and enough storage and flexibility to  
meet all of your nuclear medicine department needs.

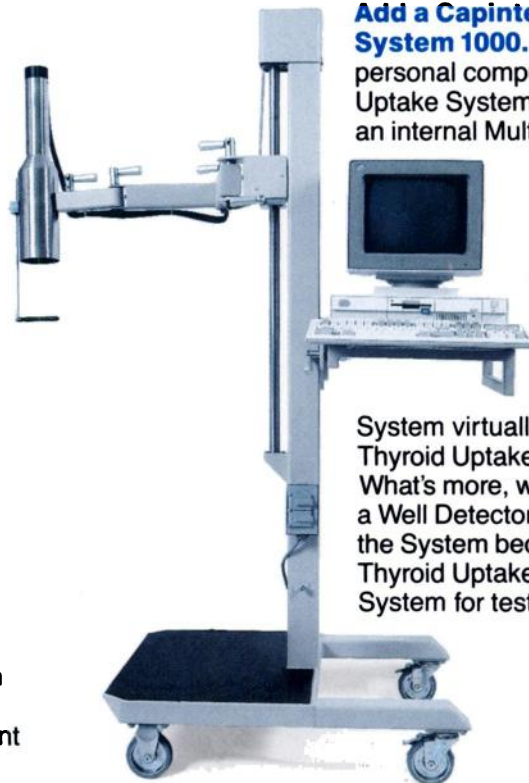
**Start with CRC®-PC System.** Everything from dose prepara-  
tion to data analysis to patient scheduling is computerized in  
this dedicated system of dose calibration and patient manage-  
ment. Key to the CRC-PC System's outstanding performance  
capability is your choice of Capintec's most advanced family



of radioisotope calibrators. No matter which one you choose,  
the CRC-PC System will support you from the placement of  
the purchase order, all the way through to waste disposal.

Our unique Quick-On-Call capability allows you to  
bypass normal daily routines, and quickly access functions  
necessary to dose a patient even "after hours" or for  
emergency procedures.

**Add new Capintec equipment as your needs dictate.**  
Look for Capintec innovations in portable monitors for radia-  
tion exposure profiling and for contamination studies. In the  
area of wipe testing, look for a counter that is truly capable of  
generating statistically meaningful data.



**Add a Capintec Thyroid Uptake  
System 1000.** It's the world's first

personal computer-based Thyroid  
Uptake System. The System has  
an internal Multichannel Analyzer  
(MCA)\* and the Excel  
Software Package®

And together with the  
exceptionally easy-to-  
use applica-  
tion soft-  
ware, written under  
the Microsoft Win-  
dows Multiprogram  
Environment, the

System virtually obsoletes all other  
Thyroid Uptake Systems.  
What's more, with the addition of  
a Well Detector and lead shield,  
the System becomes a combination  
Thyroid Uptake/Well Counting  
System for test tube and bulk samples.



**CAPINTEC, INC.**

6 Arrow Road, Ramsey, New Jersey USA 07446  
Toll Free (800) 631-3826 or (201) 825-9500  
Telex: 642375 (CAPINTEC RASY)

© CAPINTEC, INC. 1989

Circle Reader Service No. 9

**Policy**—The Journal of Nuclear Medicine accepts classified advertisements from medical institutions, groups, suppliers, and qualified specialists in nuclear medicine. Acceptance is limited to Positions Open, Positions Wanted, Equipment Available, and Seminars. We reserve the right to decline, withdraw, or modify advertisements that are not relevant to our readership.

**Rates for Classified Listings**—\$15.00 per line or fraction of line (approx. 50 characters per line, including spaces). Please allow 28 characters for the first line which will appear in capital letters. Special rates for *SNM members* on Positions Wanted: \$10.00 per line. *Note: Box numbers are available for the cost of the 2 lines required.*

**Rates for Display Ads**—Agency commissions are offered on display ads only.

Full page	\$1105	Quarter page	\$430
Half page	650	Eighth page	365

**Publisher-set charges:** page \$100; half page \$75; quarter page \$40; eighth page \$25.

**Terms**—Payment must accompany order. Make checks payable, in U.S. dollars on U.S. banks only, to: The Society of Nuclear Medicine.

**Deadline**—first of the month preceding the publication date (January 1 for February issue). Please submit classified listings typed double spaced. No telephone orders are accepted.

**Send copy to:**  
Classified Advertising Department  
The Society of Nuclear Medicine  
136 Madison Avenue  
New York, NY 10016-6760  
(212) 889-0717  
FAX: (212)545-0221

## Positions Available

### Physician

**FACULTY POSITION IN NUCLEAR MEDICINE.** ABNM Board-eligible or certified physician, also Board-eligible or certified in Internal Medicine or Diagnostic Radiology. Position entails a major role in R and D of nuclear medicine techniques and clinical services in the associated VA Medical Center, and research and teaching in nuclear medicine at the University of Iowa. The VAMC also provides significant opportunities for research. Interested applicants should send a curriculum vitae and references to: Peter T. Kirchner, MD, Director, Division of Nuclear Medicine, Department of Radiology, University of Iowa, College of Medicine, Iowa City, IA 52242. Women and members of minority groups are encouraged to apply. The University of Iowa is an Affirmative Action/Equal Opportunity Employer.

**NUCLEAR MEDICINE PHYSICIAN.** Experienced ABNM certified physician needed for part-time employment. Desirable situation offering a combination of private practice, teaching, and opportunities for research. Very pleasant California coastal community. Send inquiries to: Daniel S. Rimkus, MD, Cancer Foundation of Santa Barbara, 300 W. Pueblo St., Santa Barbara, CA 93105. EOE.

**NUCLEAR MEDICINE PHYSICIAN.** Immediate Opening. Well equipped department in a 523-bed University-Affiliated Hospital in Atlanta, Georgia. ABNM or ABR-SCNR Certified or eligible. Full or part-time. Academic appointment available. Wide range of procedures performed including stress and IV Persantine SPECT TI-201 evaluations. Hospital stress lab located in nuclear medicine department. Please submit curriculum vitae to: Oliver A. Sorsdahl, MD, Director of Nuclear Medicine, 300 Boulevard NE, Atlanta, GA 30312. EOE.

### Director

**DIRECTOR of Clinical PET Center.** UCLA is currently seeking a faculty member for the Division of Nuclear Medicine and Biophysics, Department of Radiological Sciences to be the Director of a newly established clinical PET center. This individual should have the academic, administrative, and scientific background commensurate with an Associate or full Professor appointment. In addition to documented experience with the principles, applications and use of positron emission tomography (PET) in the study of neurologic, psychiatric and cardiovascular diseases, it is desirable that the individual have specific experience or training in business and business management. The clinical PET center consists of a state-of-the-art positron emission tomograph, a low energy cyclotron for radiopharmaceutical production, and computer based systems for data management, database, reporting and accounting information. Candidates should have training in Nuclear Medicine and, preferably, have specialty training in one of the following disciplines: Internal Medicine, Radiology, Neurology, Neurosurgery, Psychiatry, Cardiology or Cardiovascular Surgery. Address correspondence to: John C. Mazziotta, MD, PhD, c/o Wendy Hagar, B2-086 CHS, Division of Nuclear Medicine and Biophysics, Department of Radiological Sciences, UCLA School of Medicine, Los Angeles, CA 90024-1721. UCLA is an Affirmative Action/Equal Opportunity Employer.

### Faculty

**FACULTY MEMBERS.** The Department of Radiology's Division of Nuclear Medicine is recruiting faculty members with expertise, interest and leadership in: cardiovascular nuclear medicine, MRI and PET. Therapy with unsealed Radioisotopes including monoclonal antibodies; SPECT and PET of the CNS. The Division operates three facilities with a total of 14 cameras, 4 single head SPECT units in-

cluded. Plans exist for the division to function as a fully computerized PACS Laboratory. A multidetector SPECT unit and PET/Cyclotron facility is planned. Please send CV and brief outline of ways in which you could contribute to our program to: George N. Sfakianakis, MD, Director, Division of Nuclear Medicine (D-57), University of Miami School of Medicine, PO Box 016960, Miami, FL 33101. University of Miami is an Equal Opportunity/Affirmative Action Employer.

**ASSISTANT PROFESSOR of Radiology.** Requirements: Board certified/eligible in nuclear medicine, proven academic performance, US citizen or permanent visa, permanent Ohio license or a state with reciprocity with Ohio. Applicants should reply with CV to: Harry R. Maxon III, MD, Director, Eugene L. Saenger Radioisotope Laboratory, University of Cincinnati Medical Center, Cincinnati, OH 45267-0577. An Equal Opportunity Employer

### Technologist

**NUCLEAR MEDICINE TECHNOLOGISTS.** Registered or registry eligible, to work 40+ hours per two-week pay period in 10 hour shifts, and on call rotation. Modern hospital in northwestern Twin Cities suburb. Contact: Mercy Medical Ctr., 4050 Coon Rapids, Blvd., Coon Rapids, MN 55433. (612) 427-2200. EOE.

**NUCLEAR MEDICINE TECHNOLOGIST.** Immediate opening for ARRT(N) or CNMT or Board-eligible for expanding nuclear medicine dept. Qualified candidate will be responsible for performing full range of Nuclear Imaging, SPECT a plus. Competitive salary with excellent fringe benefits. Appointments can be arranged by calling collect: Bettie Azevedo (805) 872-2802. Or send resume to: Kern Radiology, 1420 Crestmont Dr., Bakersfield, CA 93306. EOE.

**NUCLEAR MEDICINE TECHNOLOGIST.** Memorial Hospital of Sweetwater County, a 100-bed fully accredited hospital in Rock Springs, Wyoming, is currently searching for the position of registered Nuclear Medicine Technologist. Excellent benefits and salary enhance this position. Premiums for health, dental, and vision benefits are fully paid by the hospital for employees and their dependents. 25 days PDO. No state income tax. We are located very close to all season amenities of Jackson Hole, The Grand Tetons, and Yellowstone National Park. Salt Lake City and the resorts of Utah and Colorado are within short driving distance. Interested applicants should contact the Personnel Department: Memorial Hospital of Sweetwater County, PO Box 1359, Rock Springs, WY 82901. Call Collect 1(307)362-1490. EOE.

**NUCLEAR MEDICINE TECHNOLOGIST.** Saint Anthony Hospital, a 190-bed modern, progressive hospital located on the shores of Lake Michigan and one hour from Chicago, has an opening for a self-motivated staff technologist. Qualified applicants should be registered or registry-eligible in nuclear medicine technology by ARRT or NMTCB. Excellent benefits & salary. Send resume to: Saint Anthony Hospital, Personnel Department, 301 W. Homer St., Michigan City, IN 46360. (219)874-0601. EOE.

## Positions Wanted

Board Certified NM PHYSICIAN, experienced in all aspects of nuclear medicine including SPECT and diagnostic ultrasound seeks group or hospital-based position. Reply to: Box 621, The Society of Nuclear Medicine, 136 Madison Avenue, New York, NY 10016-6760.

**NUCLEAR MEDICINE PHYSICIAN.** 40 y.o. ABNM, 10 yrs hospital experience, avail. June 1990, desires a position (prefer part-time) in a clinic or hospital. Experienced in cardiac imaging including SPECT. Prefer suburban area or a smaller community with access to a metropol. Midwest area. Enjoy patient contact, working with a team approach, and teaching. Good health, reliable, and excellent organizational skills. Please respond to: Box 714, The Society of Nuclear Medicine, 136 Madison Ave., New York, NY 10016.

# CELEBRATE NUCLEAR MEDICINE WEEK

## July 30–August 5, 1989

# “We’re defining Good Medicine every day at Kaiser Permanente in Southern California.”

## Nuclear Medicine Technologists



Join a network of good people working together to provide quality health care. Come to Kaiser Permanente, one of the nation's leading health care organizations. Opportunities are currently available for Nuclear Medicine Technologists at our Los Angeles and San Diego medical centers.

### Los Angeles

Two full-time positions are currently available at our Los Angeles medical center. Qualified candidates must possess current ARRT, CNMT or ASCP certification. Must be graduates of a formal training program recognized by the American Medical Association and American College of Nuclear Physicians.

For these Los Angeles positions, send your resume to: **Personnel Department, JOU-108-6/89, 1515 N. Vermont Ave., 2nd Floor, Los Angeles, CA 90027.**

### San Diego

Qualified candidates must be registered with NMTCB or ARRT. Two years experience is required. Computer and SPECT experience is preferred.

For this San Diego position, send your resume to: **Personnel Department, JOU-108-6/89, 4646 Mission Gorge Place, San Diego, CA 92120.**

We are an Equal Opportunity Employer.

## Nuclear Medicine Technologists have found a home for their skills at Kaiser Permanente, Los Angeles.



Kaiser Permanente is one of the nation's leading health care organizations. Our 632-bed Los Angeles medical center is home to many skilled health care professionals. These individuals work together in a stimulating, collaborative environment that inspires professional growth and high quality health care.

Two full-time positions are currently available at our Los Angeles medical center for Nuclear Medicine Technologists. Qualified candidates must possess current ARRT, CNMT or ASCP certification.

Must be graduates of a formal training program recognized by the American Medical Association and American College of Nuclear Physicians.

We offer competitive salaries, a comprehensive benefits package and the opportunity to make the most of your skills in Nuclear Medicine. For immediate consideration, please send your resume to: **Personnel Department, JOU- 108-7/89, 1515 N. Vermont Ave., 2nd Floor, Los Angeles, CA 90027.** We are an Equal Opportunity Employer.

## PROUD TO CARE

### \$1,500 SIGN-ON BONUS FOR EXPERIENCED PERSON

Morton Plant Hospital in Clearwater, Florida is the Sunshine State's fifth-largest hospital, offering you outstanding facilities and state-of-the-art equipment. We're located on a beautiful campus in a semi-tropical, blue-water Gulf Coast location. Morton Plant has a full-time opportunity for a Nuclear Med Technologist who can perform all aspects of imaging and dose preparation. You must be familiar with SPECT scanning and computerized studies. Hours are Monday-Friday, 7:30 a.m.-4:00 p.m., with weekend and call rotation. Qualified candidates will also be Registered or CNMT. A Bachelor's degree is preferred. We offer a competitive salary and benefits package. For information, call COLLECT (813) 462-7342, or send resume to: Employment Office.

### Morton Plant Hospital

323 Jeffords St.  
P.O. Box 210  
Clearwater, FL 34617

Equal Opportunity Employer

## DIAGNOSTIC MEDICAL PHYSICIST

St. John's Regional Health Center is seeking a self-motivated/self-directed Diagnostic Medical Physicist. The position requires expertise in Nuclear Medicine, Diagnostic Radiology, Clinical Laboratory and Regulatory/Accreditation Standards. Experience with MRI, Ultrasound and computer programming would be desirable. The successful candidate will function as the radiation safety officer for our facility.

Candidates for the position must have a master's or PhD in Medical Physics and 5-7 years experience as a Clinical Diagnostic Medical Physicist. Certification in Diagnostic Radiology or Radiological Physics would be desirable; eligibility is required.

St. John's Regional Health Center is an 886-bed, acute care hospital in Southwest Missouri. The area, located in Missouri's premier outdoor recreational area, offers many cultural activities and educational opportunities. Excellent hunting, fishing, boating and canoeing areas are available in this beautiful mountain area. The salary for this position is negotiable and will be based on experience/qualifications.



If you are interested in this position, please send resume and salary history to: Jerri Flikkema, ST. JOHN'S REGIONAL HEALTH CENTER, 1235 E. Cherokee, Springfield, MO 65804, 417-885-2946.

Equal Opportunity Employer

## NUCLEAR MEDICINE SUPERVISOR & STAFF TECHNOLOGIST

Progressive 434-bed acute care facility has an opening for a Supervisor & Staff Technologist. St. Anthony's Hospital is located on the Sun Coast in the Tampa Bay area of Florida. Technologist position requires national and state licensure. Experience in RIA, imaging, spect and nuclear cardiology preferred. Call rotation required. Supervisory position requires previous experience in management as well as technical duties listed above. Excellent fringe benefits package including newly revised salary scale. Send resume or call: Director of Human Resources,



St. Anthony's Hospital

1200 7th Ave. North, St. Petersburg, FL 33705  
1-800-876-FLEX

Equal Opportunity Employer

## Diagnostic Imaging

### STAFFING SPECIALISTS

Specializing in Diagnostic Imaging  
and Nuclear Medicine Personnel

- Temporary Staffing Service
- Nationwide Recruitment Service

- ✓ highly qualified, experienced technologists on a PRN basis
- ✓ recruiting services for permanent positions at a fraction of your recruiting costs
- ✓ assistance in eliminating revenue loss due to staffing shortages

For information  
regarding the services call  
813-461-9642

**RADS** <sup>T.M.</sup>  
RADIOGRAPHY SERVICE, INC.

## NUCLEAR MED TECHS

COME TO BEAUTIFUL  
SAN DIEGO

*You Will Be Working In  
A Progressive Healthcare  
Facility Minutes From  
Sunny Beaches & Mountain  
Winter Sports*

Mercy Hospital Medical Center, a 523 bed trauma and teaching facility, is currently seeking independent and motivated Techs to provide a wide range of procedures including SPECT studies. Full-time & part-time opportunities are available. Experience is preferred, but we will consider new grads or Techs, who are reentering the field, for an extended orientation program.

We offer outstanding compensation programs in addition to opportunities for professional growth.

**Come Join The Mercy Team**

Please submit a resume to Human Resources Dept., Mercy Hospital & Medical Center, 4077 Fifth Avenue, San Diego, CA 92103-2180, (619) 260-7072. EOE m/f/h/v

 **Mercy Hospital  
and Medical Center**





## Nuclear Medicine Technologist

Yuma Regional Medical Center is a 283-bed acute care facility with over 900 employees and 100 physicians. As the sole provider of hospital care in our area, we're constantly modernizing our equipment and facilities to provide quality care and the most satisfying work environment for our staff. We're currently looking for a highly motivated, Nuclear Medicine Technologist to join our team.

In this lead position, you will be responsible for patient examination as well as fulfilling the monitoring and record keeping requirements in our busy, dynamic department. We presently have a Picker Dyna camera and Adac computer in our department and we're looking to expand with Spect. Experience is preferred. You must be registered or registry eligible by the NMTCB.

We offer nationally competitive salaries and comprehensive benefits, including medical, dental, vision and life insurance; relocation assistance; paid leave time to cover sick days, vacations and holidays; tax-sheltered annuity programs; and a retirement plan. For consideration, please send your resume to: **Yuma Regional Medical Center, Dept. JNM789, 2400 Avenue A, Yuma, AZ 85364.** Equal Opportunity Employer.

**Still Growing... Still Caring**



Yuma Regional  
Medical Center

---

---

## BROOKHAVEN NATIONAL LABORATORY

---

---

## Nuclear Medicine Technologist

Brookhaven National Laboratory, one of the nation's leading R&D facilities, has an immediate position available for a Nuclear Medicine Technologist.

The qualified candidate must have a BS degree in biology, chemistry, physics, nuclear medical technology or the equivalent. Must be registered by the American Association of Radiologic Technologists (AART) or the Nuclear Medicine Technician Certifying Board (NMTCB), or at a minimum, be registry eligible. Experience should include 3-5 years clinical imaging experience, including single proton emission computer tomography (SPECT). Research and experience working with animals is highly desirable.

Benefits include 24 vacation days annually, comprehensive medical, dental and retirement plans. For further information, please call (516)282-2703 or send a resume including salary history and requirements to: **Jeffrey W. Taylor, AD<sup>®</sup> MedTech, Brookhaven National Laboratory, Associated Universities, Inc., Personnel Division, Bldg. 185, Upton, New York 11973.** Equal Opportunity Employer m/f.



---

## TECHNOLOGISTS

### Nuclear Medicine

Loyola University Medical Center has immediate full-time and part-time openings for staff nuclear medicine technologists who are registered by the NMTCB, ARRT, ASCP, or are registry-eligible. Successful applicants must be eligible for licensure in Illinois. Extensive orientation will be provided in our state-of-the-art in vivo (Imaging) area which includes a cardiac stress lab, in-house radiopharmacy, five SPECT cameras, Pho/Con, Capintec Cardiac vest monitor, Lunar DPX bone densitometer, and nuclear medicine (MDS, Siemens and VAX) computers.

A comprehensive benefits package includes extensive in-service training and access to THE NUCLEAR NETWORK. For further information, please contact:

Fran Hlavin, Human Resources

**Loyola University Medical Center,**

2160 South First Avenue  
Maywood, IL 60153 or telephone (312) 531-3242.

---

## Burlington, Vermont



## Nuclear Medicine Technologists

The Medical Center Hospital of Vermont is expanding its nuclear cardiology service and has several positions open for qualified candidates. ARRT/MMTCB certification and nuclear cardiology experience preferred or registry eligible from an approved school of nuclear medicine. The Nuclear Medicine Department is located in a new modern wing of the hospital. We are currently purchasing two new cameras to compliment our state-of-the-art department. Along with competitive salary and excellent benefits, you will have an opportunity to participate in the University of Vermont School of Nuclear Medicine. Some relocation expenses provided.

MCHV is a 500-bed tertiary care teaching hospital located on beautiful Lake Champlain in the heart of Green Mountain ski country. Year round recreational, cultural and educational opportunities are available. Please send resume or contact **Jean Ransom, Human Resources Department, MCHV, Burlington, VT 05401, 802-656-2825 or 1-800-722-9922.**



Medical Center Hospital of Vermont  
Equal opportunity / affirmative  
action employer

## ASSISTANT CHIEF NUCLEAR MEDICINE TECHNOLOGIST

St. Joseph's Hospital Health Center is currently looking to fill a full time Assistant Chief position within our expanding department. Our department is equipped with state-of-the-art computer and 4 imaging systems including SPECT. Prior to the end of the year the Nuclear Medicine Dept. will be relocating to a newly renovated section allowing installation of our second SPECT system.

The perspective candidate must be certified/registered by the N.M.T.C.B. or A.R.R.T. respectively. The individual will be assisting with the overall management of the department, consisting of 9 full time employees.

Our technologists enjoy excellent salaries and comprehensive benefits. If you are interested we'd like an opportunity to share more about what we have to offer you in your pursuit in a challenging and rewarding career.

Please contact either by phone or by forwarding your resume to Personnel Dept., St. Joseph's Hospital Health Center, 301 Prospect Ave., Syracuse, N.Y. 13203. (315) 448-5575.

*An Equal Opportunity Employer*

**St. Joseph's  
Hospital  
Health Center**

## 14th Annual Western Regional Meeting October 19-22, 1989 Monterey, California

The Doubletree Inn has been selected as the headquarters hotel for the annual combined meeting of the Northern California, Southern California, Pacific Northwest, Hawaii and Rocky Mountain Chapters.

### SCIENTIFIC PROGRAM

Categorical and refresher courses, with lectures given by invited speakers, will feature the following topics: Cardiology, Neurology, Oncology, Pediatrics, GI, Endocrinology, PET, Monoclonal Antibodies and Pharmacological Interventions. The 3½ day single track format will also include scientific papers and posters and case presentations.

### COMMERCIAL EXHIBITS

An extensive display of equipment, publications and radio-pharmaceuticals by over 40 commercial manufacturers will provide attendees additional opportunity to become familiar with the latest developments in the field of Nuclear Medicine.

### REGISTRATION FEES

Physicians/Scientists	\$125
Technologists	\$ 50
Residents	\$ 60

For more information contact the Western Regional Office, P.O. Box 2189, Roseville, CA 95746

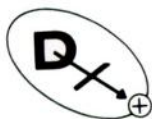
Joyce Matin, Executive Director (916)791-3428

## Attention . . . TECHNICARE® and PICKER® USERS

*Diagnostix Plus is your Source for:*

- **Reconditioned Cameras**
  - Large Field (37 and 61 PMT's)
  - Small Field Cardiac Cameras
  - Mobile and SPECT Cameras
- **Collimators**
  - Upgrade to Hexagonal Hole
  - Insert Collimators, 30° Slant Hole
  - Collimator Repairs/Re-Cores
  - A large selection of used collimators
- **Camera Performance Upgrades**
  - Uniformity Correction (DUFC)®, MicroZ™
  - Resolution
  - Crystal Replacement
  - Thin Crystal Performance Upgrades
  - High Resolution Multi Imagers and Formatters
- **Computers**
  - ADAC®, MDS®, Picker®, Elscint®,  
Technicare®, General Electric®

\* *We buy, sell and trade equipment. Innovative rental programs available.\**



**Diagnostix Plus, Inc.**

P.O. Box 437 • New Hyde Park, NY 11040 USA • (516)742-1939

Telex: 226078 (AEGIS UR) • FAX: (516)742-1803

*Cost Effective Diagnostic Imaging Products*

Circle Reader Service No. 8

## Radiochemist/ Radiopharmacist

The Cleveland Clinic Foundation, internationally recognized for its leadership in quality patient care, education and research, is seeking an individual to work under the supervision of the Director of Nuclear Chemistry. Candidate will be responsible for operating the nuclear pharmacy laboratory by receiving, storing, formulating, dispensing and disposing of radiopharmaceuticals as required by federal and state regulations.

Additional responsibilities include performing sterility and pyrogen testing on all radiopharmaceuticals that are prepared in the laboratory, maintaining required records for pharmaceutical preparation, dose calculation and disposal, and assist in experimental studies in the research and development of radiopharmaceuticals. Candidate will also train technologists and residents in radiopharmacy.

Qualified candidates must possess a Bachelor of Science in Chemistry or Pharmacy with a minimum of 1 to 2 years' related work experience preferably in radiopharmacy or radiopharmaceutical chemistry. Excellent salary and benefit program. Send resume to **Patricia Portaro, Staffing Manager, The Cleveland Clinic Foundation, One Clinic Center, 9500 Euclid Avenue, Cleveland, Ohio 44195.**

**THE CLEVELAND CLINIC  
FOUNDATION**



## Northeast Regional Meeting

### Greater New York/ New England Chapters

5th Annual Scientific Meeting

October 20-22, 1989

Philadelphia, PA

#### Registrants and Exhibitors contact:

Mitchell H. Strommer  
360 Cedar Lane  
East Meadow, NY 11554

(212) 904-4180

## EUROPEAN ASSOCIATION OF NUCLEAR MEDICINE CONGRESS 1989

**AUGUST 28 – SEPTEMBER 1  
STRASBOURG, FRANCE**

### SCIENTIFIC PROGRAM

Plenary sessions, with lectures given by invited speakers, will feature the following main topics: Oncology, Emission Tomography, Cardiology, Pediatrics, Neurology. Scientific Papers, Works-in-Progress, Technicians' Program, Scientific and Commercial Exhibition, and Pre- and Post-Congress Meetings are also included.

Topics related to nuclear medicine will be considered for inclusion in the scientific program as follows:

**Clinical science applications:** Cardiology and Circulation, Bone/Joint Diseases, Pulmonary Diseases, Neurology, Nephrology, Hematology, Endocrinology, Pediatrics, Gastroenterology, Oncology, Immunology, Infectious Diseases

**Physical science—basic research:** Computers and Data Analysis, NMR: Imaging and In Vivo Spectroscopy, Dosimetry, Radiobiology, Instrumentation

**Laboratory science and in vitro applications:** Radioassay, Tumor Markers, Cell Labeling, Genetic Engineering

**Radiopharmaceutical:** General, Halogens, Positrons, Proteins/Antibodies, Technetium

### EXHIBITION

A comprehensive exhibition of equipment and radiopharmaceutical manufacturers will be on display.

### Registration and fees:

*Non-Members of European Association of Nuclear Medicine:* By June 15 the registration fee for non-members will be 1425 FF, VAT included. After June 15 the registration fee for non-members will be 1780 FF, VAT included.

*Members of European Association of Nuclear Medicine:* If EANM member fees are registered by April 1: no Congress fee. If EANM member fees are registered after April 1: full Congress fee must be paid minus 120 DM (membership fee), i.e.:

—925 FF, VAT included, by June 15, 1989

—1280 FF, VAT included, after June 15, 1989

### Social Program

A comprehensive social program has been planned, including the Opening Ceremony with a concert and welcome cocktail (free of charge), a concert in the Cathedral of Strasbourg, a folkloric evening in the Alsatian vineyard (Riquewhir), a dinner dance in the Pourtales Castle near Strasbourg, and the Farewell Party in the Orangerie Gardens.

**Accompanying persons' program:** Numerous and attractive excursions and activities are planned.

**PRESIDENT OF THE CONGRESS:** Prof. Jacques Chambon

### SCIENTIFIC SECRETARIAT:

Institut de Physique Biologique  
Faculté de Médecine  
4, rue Kirschleger  
F-67085 STRASBOURG  
Tel.: 88-35-42-22  
TELEX: IPBS 891017  
FAX: 88-37-14-97

### OFFICIAL ORGANIZING OFFICES

ASTRA VOYAGES  
20, rue du Jeu des Enfants  
P.B. 453 R 10  
F-67010 STRASBOURG  
Tel.: 88-23-28-28  
TELEX: 890675

# Information for Classified Advertisers—1989

**POLICY:** *The Journal of Nuclear Medicine* and the *Journal of Nuclear Medicine Technology* accept classified advertisements from medical institutions, groups, suppliers, and qualified specialists in nuclear medicine. Acceptance is limited to Positions Open, Positions Wanted, Equipment Available, Equipment Wanted, and Seminars. We reserve the right to decline, withdraw, or modify advertisements that are not relevant to our readership.

**LINE-ADS:** \$15.00 (JNM) or \$14.00 (JNMT) per line or fraction of line (approx. 50 characters per line, including spaces). Please allow 28 characters for the first line which will appear in capital letters. Special rates for SNM members on **Positions Wanted:** \$10.00 per line. *Note:* Box numbers are available for the cost of the two lines required.

## EXAMPLES

NUCLEAR MEDICINE TECHNOLOGIST. Registered or registry eligible technologist to work in private office. Special emphasis on nuclear cardiology. Salary negotiable. Send resume to: Box 1203, The Society of Nuclear Medicine, 136 Madison Ave., 8th fl., New York, NY 10016-6760. EOE.

← Estimate 28 characters First Line  
Estimate 50 characters Per Line →

NUCLEAR MEDICINE PHYSICIAN with board certification in internal medicine or radiology needed for expanding out patient imaging practice. Qualified applicants should send CV to: I.M.C. Inc., 2040 W. Wisconsin Ave., Suite 378, Milwaukee, WI 53233; (414)933-8739. EOE.

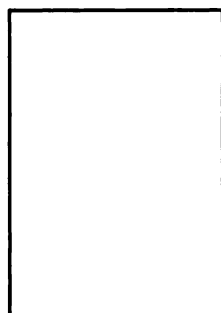
### WITH BOX NUMBER

COST: 6 lines × \$15.00 = \$90.00 (JNM)  
6 lines × \$14.00 = \$84.00 (JNMT)

### WITHOUT BOX NUMBER

COST: 6 lines × \$15.00 = \$90.00 (JNM)  
6 lines × \$14.00 = \$84.00 (JNMT)

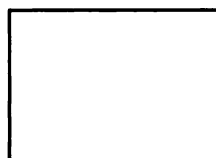
## DISPLAY ADS DIMENSIONS:



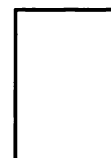
FULL PAGE  
6 7/8" wide × 9 1/2" high



1/2 PAGE VERTICAL  
3 3/8" wide × 9 1/2" high



1/2 PAGE HORIZONTAL  
6 7/8" wide × 4 3/4" high



1/4 PAGE  
3 3/8" wide × 4 3/4" high



1/8 PAGE  
3 3/8" wide × 2 5/8" high

## RATES:

	<i>JNM</i>	<i>JNMT</i>
Full page	\$1105	\$630
Half page	650	385
Quarter	430	255
Eighth	365	220

\*Publisher-set charges: page \$100; half page \$75; quarter page \$40; eighth page \$25.

**TERMS:** Payment or an authorized Purchase Order must accompany order. Make check payable, in U.S. dollars on U.S. banks only, to: The Society of Nuclear Medicine. Note: 15% agency commission is offered on display ads only.

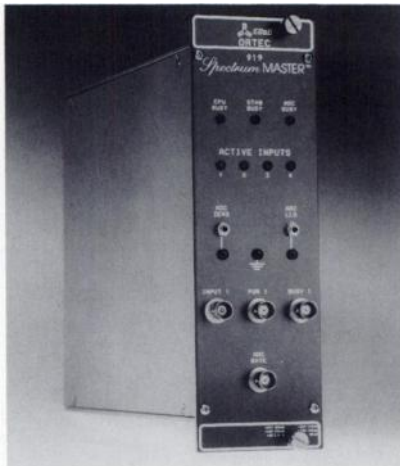
**FREQUENCY:** *The Journal of Nuclear Medicine* is a monthly and the *Journal of Nuclear Medicine Technology* is a quarterly, published in March, June, September, and December.

**DEADLINES:** *JNM*—First of the month preceding the publication date (for example, October 1 for November issue). *JNMT*—25th of second month preceding publication date (for example, October 25th for December issue).

**SEND COPY TO:** Classified Advertising Department  
The Society of Nuclear Medicine  
136 Madison Avenue, 8th Floor  
New York, NY 10016-6760  
FAX: (212)545-0221

For further information please contact Inna Fomin at (212) 889-0717.

Each description of the products below was condensed from information supplied by the manufacturer. The reviews are published as a service to the professionals working in the field of nuclear medicine and their inclusion herein does not in any way imply an endorsement by the Editorial Board of The Journal of Nuclear Medicine or by The Society of Nuclear Medicine.



## PC-Based MCA

The 919 Spectrum Master is the latest NIM addition to EG&G Ortec's line of multi-channel analyzer products. When interfaced to a personal computer, and used in conjunction with the New Maestro II MCA Emulation software, a modular MCA of power and flexibility results. The Model 919 incorporates a 16K-channel ADC, 4-input multiplexor-router, digital stabilizer, and 64K channels of non-volatile data memory. It may be configured for four inputs at low-to-moderate count-rates, each with its own conversion gain, presets, and start/stop control. Alternatively, the 919 may be configured as a single-input, digitally-stabilized MCA that can handle from low to ultra-high count-rates. EG&G Ortec, 100 Midland Rd., Oak Ridge, TN 37831-0895. (615) 482-4411

Circle Reader Service No. 101

## Computer Network for PET Systems

Scanditronix, Inc. has incorporated a new computer network into its positron emission tomography systems. Using Local Area VAX cluster software, Scanditronix has integrated the DEC Workstation 3100 into its systems. As a result, Scanditronix has the same software in up to 12 work stations. Each work station uses DEC X Window Standards. A MicroVax 3600 File

Server acts as the host for the network, thereby ensuring that each component is compatible. As a result, the network allows users to upgrade their software via the host without having to upgrade the entire system. This allows the user great flexibility and capacity for future expansion. Since the Scanditronix network is connected by Ethernet, it can be accessed from anywhere in the user's institution. A referring physician, for example, can use a personal computer in his office to review images stored in the host computer in the PET center. Scanditronix, Inc., 106 Western Ave., Essex, MA 10923. Attn. Steven Kendall. (508) 768-6994.

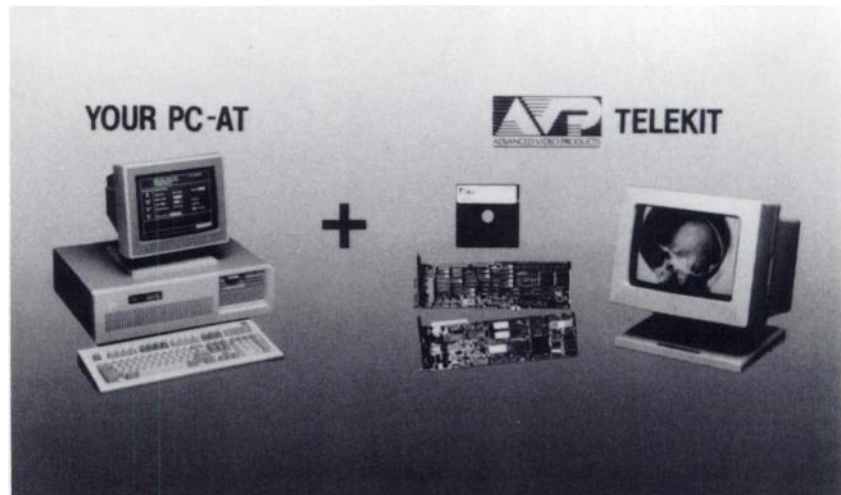
Circle Reader Service No. 102

## Explosion-Proof Disposal System

The popular Vyleater disposal system for vials and other small containers is now available with explosion-proof electric motors and controls. This makes it ideal

for laboratories using petroleum distillates, volatile solvents, or other highly flammable materials. Through an action that combines crushing with liquid/solids separation, the Vyleater greatly reduces disposal costs for industrial, medical, and research laboratories using large quantities of glass or plastic vials or other small containers. With the Vyleater, there is no need to empty liquid before disposal. As the containers are crushed, liquids are automatically drained off into a secure barrel for subsequent disposal. Solids, reduced to a fraction of their original bulk with up to 95% of the liquids removed, are deposited in a 55 gallon drum. With the explosion-proof option, both the Vyleater's main motor and the one driving its unique internal fume-exhaust system are Class 1, Group D explosion-proof. Controls are housed in a NEMA 7 explosion-proof cabinet. S & G Enterprises, Inc., 5626 N. 91st St., Milwaukee, WI 53225. (800)233-3721.

Circle Reader Service No. 103



## Teleradiology Kits

Advanced Video Products, Inc. announces the availability of a 1280 x 1024 resolution display version of their popular teleradiology kits. The Telekit 1280 is designed to turn an existing IBM PC-AT or compatible into a high resolution display station. This easy to install kit includes the necessary equipment and software to transform a home computer into a display link in an AVP teleradiology system. The Telekit 1280 can receive and display images from any other AVP workstation, and also has the capability to manipulate, store, or transmit the 1280 x 1024 resolution x 256 shades of grey images easily and efficiently. 60 Hz non-interlaced 19"

display monitor, high speed 19.2K bps internal modem to transmit images, and a high performance display board are featured with this kit. AVP software allows key features such as reception of multiple images while viewing individual images; display of up to 16 images simultaneously; user selectable data compression; unattended operation for total freedom; compatibility to AVP's complete product line. Installation of this do-it-yourself project is easy and requires no previous experience with the inside of a computer. AVP Concord, 30 Domino Dr., Concord, MA 01742. (508)371-7130.

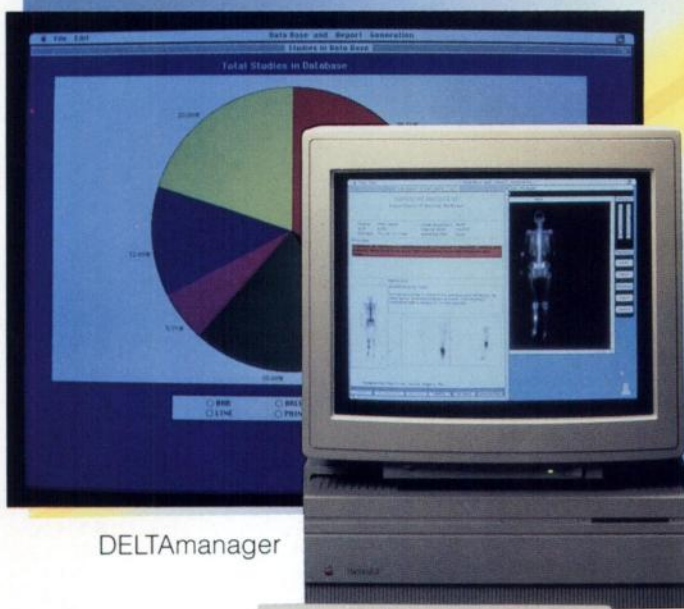
Circle Reader Service No. 104

# SIEMENS

7500 Orbiter



MaxDELTA



DELTAmanager

MicroDELTA



## Introducing the Heart of the Nuclear Network!

# MaxDELTA 1000

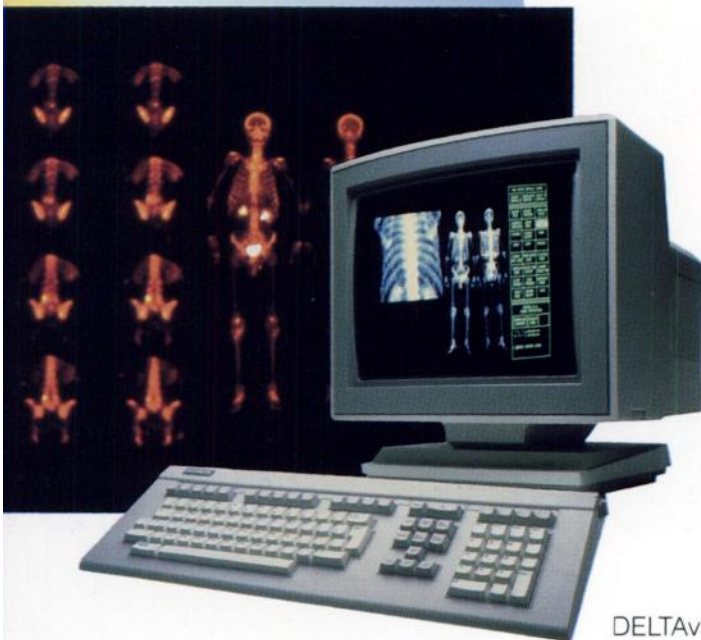
MaxDELTA 1000® is the latest high-speed, **32-bit** computer from Siemens. Configured with a stand-alone camera, or as an add-on to any existing system, MaxDELTA 1000 gives you powerful turnkey capability, and flexible expansion with instant connectivity to additional DELTA family computer products, such as MicroDELTA, DELTAvision, and DELTAmanger.

The pulse of the MaxDELTA 1000 is controlled by a new Operating program that sharpens your technical edge, assuring the highest staff productivity and best patient management, while providing you with the diagnostic confidence you expect from Siemens... world leader in nuclear medicine!

### MaxDELTA 1000 Systems feature:

- High-speed, multi-task 32-bit MicroVAX II.®
- Simultaneous acquisition and processing, including SPECT.
- Ethernet expandability.
- Large storage capacity with 159 Mbyte Winchester Disk.
- System Manager display terminal.
- CLINIC, SPECT and Systems Manager software.

**MaxDELTA 1000... the beat gets stronger!**



DELTAvision



**Siemens Medical  
Systems, Inc.**

2000 Nuclear Drive  
Des Plaines, IL 60018  
(312) 635-3259

**Siemens... technology for life.**

**INVESTING FOR  
YOUR FUTURE**

**Roche Professional  
Service Centers**

provide an extensive line of quality  
nuclear pharmacy products  
and services...and we're...

**expanding to service  
your growing needs**

For additional information contact your local Medi-Physics  
Territory Manager, Roche Professional Service Center  
or call 1-800-MEDI-123.

**Roche Professional  
Service Centers**

ROCHE

a subsidiary of Hoffmann-La Roche Inc.

Roche Professional Service Centers Inc.  
140 East Ridgewood Avenue  
Paramus, NJ 07652

**medi+physics®**

ROCHE

a subsidiary of Hoffmann-La Roche Inc.

Medi-Physics, Inc.  
140 East Ridgewood Avenue  
Paramus, NJ 07652