

The Current and Future Roles of Precision Oncology in Advanced Breast Cancer

Heather Jacene¹, Eric Dietsche², and Jennifer Specht³

¹*Imaging/Radiology, Dana-Farber/Brigham Cancer Center, Boston, Massachusetts;* ²*Department of Radiology, Rhode Island Hospital, Warren Alpert Medical School of Brown University, Providence, Rhode Island;* and ³*Fred Hutch Cancer Center, Divisions of Hematology and Oncology and of Clinical Research, Department of Medicine, University of Washington, Seattle, Washington*

Learning Objectives: On successful completion of this activity, participants should be able to (1) define prognostic and predictive imaging biomarkers and name at least 1 prognostic and predictive imaging biomarker for advanced breast cancer; (2) list the current roles of ¹⁸F-FDG PET/CT imaging in advanced breast cancer; and (3) list 3 non-¹⁸F-FDG radiotracers that may serve as imaging biomarkers in advanced breast cancer.

Financial Disclosure: Dr. Jacene is a consultant for Blue Earth Diagnostics and Spectrum Dynamics Ltd.; receives research support from Blue Earth Diagnostics, Inc. (to the institute); received speaker honoraria from ITM and Monrol; and receives royalties from Cambridge University Press. Dr. Specht receives research support from Lyell Immunopharma, Merck, Cascadian Therapeutics, Pfizer, Seattle Genetics, Genentech, Xencor, Abbvie, Inc., Celcuity, Inc., Novartis, Myriad Pharmaceuticals, AstraZeneca, and Carisma Therapeutics; is a consultant for GE Healthcare, Sensei Biotherapeutics, Lyell Immunopharma, A2 Biotherapeutics, and Volastra; is on the advisory board for Daiichi Sankyo, GlaxoSmithKline, GE Healthcare, Sensei Biotherapeutics, and Lyell Immunopharma; and is an investigative meeting participant for A2 Biotherapeutics. The authors of this article have indicated no other relevant relationships that could be perceived as a real or apparent conflict of interest.

CME Credit: SNMMI is accredited by the Accreditation Council for Continuing Medical Education (ACCME) to sponsor continuing education for physicians. SNMMI designates each *JNM* continuing education article for a maximum of 2.0 AMA PRA Category 1 Credits. Physicians should claim only credit commensurate with the extent of their participation in the activity. For CE credit, SAM, and other credit types, participants can access this activity through the SNMMI website (<http://www.snmmilearningcenter.org>) through March 2027.

Breast cancer is a common but heterogeneous disease characterized by several biologic features, including tumor grade, hormone receptor status, human epidermal growth factor receptor 2 status, and gene expression assays. These biologic and genomic features drive treatment decisions. In the advanced disease setting, inter- and inpatient tumor heterogeneity is increasingly recognized as a challenge for optimizing treatment. Recent evidence and the recent approval of novel radiopharmaceuticals have increased recognition and acceptance of the potential of molecular imaging as a biomarker to impact and guide management decisions for advanced breast cancer.

Key Words: breast cancer; molecular imaging; precision; FDG; FES; PET

J Nucl Med 2024; 65:349–356
DOI: 10.2967/jnumed.122.264882

Breast cancer represents a broad spectrum of diseases with treatment outcomes varying on the basis of disease stage and inherent tumor biology. Precision medicine aims at treatment customization based on a patient's specific disease, the disease's molecular makeup, and the environmental factors in the patient's life (1). In the late 1970s, tamoxifen, a selective estrogen receptor (ER) modulator that blocks the effects of estrogen, was approved by the U.S. Food and Drug Administration (FDA), becoming one of the first agents in the precision medicine arsenal (2). Numerous other targeted therapies have since been approved. Target

identification relies on examining tissue from the biopsy of the primary tumor or a metastatic site.

Molecular imaging is the “visualization, characterization, and measurement of biological processes at the molecular and cellular levels in humans and other living systems (3).” Molecular imaging with radiotracers, by providing functional information, is thereby distinguished from anatomic imaging, which is currently used more often for systemic staging, detecting recurrent disease, and assessing response to therapy in patients with advanced breast cancer.

Recent evidence and the approval of novel radiopharmaceuticals have driven recognition and acceptance of the potential of molecular imaging as a biomarker to guide management decisions for advanced breast cancer. After providing a brief background on breast cancer pathophysiology, this narrative review summarizes the current treatment paradigms and the expanding role of molecular imaging as a precision medicine biomarker for advanced breast cancer.

ANATOMIC AND PROGNOSTIC INDICATORS OF BREAST CANCER

Most breast cancers are carcinomas. The 2 most common histologic subtypes are infiltrating ductal (~76%) and infiltrating lobular (~8%) (4). Infiltrating ductal carcinomas typically present as firm masses on physical examination. They invade surrounding tissue in a nonregular pattern, and the malignant cells cause a fibrous reaction in the normal tissue. In contrast, infiltrating lobular carcinoma may be nonmasslike, invading normal tissue in a linear, single-cell–like infiltrative pattern (5). Both histologic subtypes may be detected on screening mammography and receive similar treatment based on clinical stage and molecular subtype. Compared with infiltrating ductal carcinomas, classic infiltrating lobular carcinomas are often of lower grade and larger, with a higher

Received Sep. 27, 2023; revision accepted Jan. 5, 2024.
For correspondence or reprints, contact Heather Jacene ([hjacob@bwh.harvard.edu](mailto:hjacene@bwh.harvard.edu)).
Published online Feb. 1, 2024.
COPYRIGHT © 2024 by the Society of Nuclear Medicine and Molecular Imaging.

incidence of bilateral involvement at diagnosis, and are more challenging to detect by mammography (6–8).

Hormone receptor expression (ER and progesterone receptor [PR]), human epidermal growth factor receptor 2 (HER2) overexpression or gene amplification, histologic grade, the Ki-67 proliferation marker, and genomic profiling classify breast cancer into distinct clinical subtypes with differing prognoses and treatment paradigms. Gene expression profiling identifies intrinsic subtypes (luminal A, luminal B, basal, and HER2-enriched), which can be approximated by immunohistochemical findings obtained in clinical practice (Table 1) (2,9).

BREAST CANCER STAGING

Breast cancer staging follows the American Joint Committee on Cancer staging system, which includes biologic features such as tumor grade; HER2, ER, and PR status; and genomic characteristics (10). Anatomic stage considers primary tumor size, nodal status, and the presence or absence of distant metastases (Tables 2 and 3). Clinical T, N, M, and biomarker information from genomic assays (Oncotype DX [Exact Sciences], MammaPrint [Agendia]) determines pathologic prognostic stage.

Advanced breast cancer includes locally advanced breast cancer (LABC), inflammatory breast cancer (IBC), and metastatic breast cancer (MBC). Historically, LABC was defined clinically as those breast cancers deemed inoperable at presentation. LABC includes patients with anatomic stage 3 disease and some with stage 2B (10,11). IBC is clinically distinct, with the diagnosis being based on findings including breast pain, edema, erythema, a rapidly enlarging breast, and a *peau d'orange* appearance. IBC has a higher likelihood of regional and distant metastases (12). Though IBC technically meets the criteria for LABC, the natural history, treatment paradigms, and outcomes differ from non-IBC (12). MBC, or stage 4 disease, involves organs and lymph nodes outside the locoregional nodal stations. Treatment is generally considered palliative; however, survival for some patients with de novo metastatic HER2-positive or oligometastatic (<5 distant sites) breast cancer may be prolonged (13).

MOLECULAR IMAGING AS A BIOMARKER: KEY TERMINOLOGY

Precision medicine uses biomarkers, defined as a “characteristic that is measured as an indicator of normal biological processes, pathogenic processes, or biological responses to an exposure or intervention, including therapeutic interventions” (14). The FDA–National Institutes of Health Biomarker Working Group established

the *BEST (Biomarkers, EndpointS, and other Tools) Resource* to provide a comprehensive glossary of all biomarker types (14). For advanced breast cancer, several biomarkers, including blood, tissue, and imaging measures, play a role in clinical care, and several key terms are important.

A prognostic biomarker correlates with a future event or disease outcome with or without treatment; a key example is hormone receptor status. Patients with ER- or PR-positive tumors survive longer than those with hormone receptor–negative tumors (15). A predictive biomarker determines potential benefit derived from a specific treatment based on the biomarker’s presence or absence. Predictive biomarkers in advanced breast cancer include HER2 overexpression and ER positivity to predict response to HER2-targeted or endocrine therapy, respectively (16,17).

Biomarkers may be both prognostic and predictive (i.e., ER). An integral biomarker directs decision-making in clinical practice or clinical trial settings. An integrated biomarker is included and under investigation in a clinical trial setting but is not used to make decisions (3).

LABC

Treatment. Neoadjuvant systemic therapy is recommended in the setting of LABC to decrease primary tumor size or to make an unresectable primary tumor operable, reduce distant recurrence risk, and inform adjuvant therapy choice based on neoadjuvant treatment response. Achieving a pathologic complete response (pCR, i.e., absence of invasive breast cancer in the breast and axillary nodes) with neoadjuvant therapy reduces recurrence risk, particularly in HER2-positive and triple-negative breast cancer (TNBC) (18).

Breast cancer subtype dictates neoadjuvant therapy selection. HER2-targeted agents (trastuzumab, pertuzumab) are used for HER2-positive breast cancer. Chemotherapy remains the backbone of neoadjuvant and adjuvant treatment for TNBC. Recent studies demonstrated the benefit of adding the immune checkpoint inhibitor pembrolizumab to neoadjuvant chemotherapy for patients with stage 2 or 3 TNBC (19,20). For patients with germline BRCA1, 2 mutations, and high-risk HER2-negative breast cancer, adjuvant olaparib is recommended on the basis of improvements in disease-free and overall survival (21).

For ER-positive, HER2-negative breast cancer, neoadjuvant chemotherapy is associated with a substantially lower pCR rate (18,20). There is emerging interest in a role for immune checkpoint inhibitors for patients with high-risk luminal breast cancers (19). After local therapy, adjuvant endocrine therapy is recommended for hormone receptor–positive breast cancer, with duration varied depending on the clinical risk at presentation and agent used. For premenopausal patients with LABC, ovarian function suppression and aromatase inhibitors are recommended (22). Cyclin-dependent kinase 4 and 6 (CDK4/6) inhibitors are considered in the adjuvant setting in specific clinical situations, such as high-risk hormone receptor–positive, HER2-negative breast cancer (23).

For all breast cancer subtypes, breast surgery follows neoadjuvant systemic therapy. Multiple factors influence choice of breast conservation versus mastectomy and axillary lymph node dissection versus sentinel lymph node biopsy or targeted axillary dissection. Radiation therapy reduces the risk of local or regional disease recurrence in LABC, even after mastectomy, because of nodal disease involvement at presentation.

Neoadjuvant therapy for LABC is an optimal setting for investigating molecular imaging biomarkers because the pCR endpoint obtained at surgery is a surrogate of survival outcomes (24). The

TABLE 1
Major Molecular Subtypes of Breast Cancer (9)

Molecular subtype	Proportion of breast cancer	4-y estimated survival
HR-positive/HER2-negative	66.6%	92.5%
HR-positive/HER2-positive	9.7%	90.3%
HR-negative/HER2-positive	4.3%	82.7%
Triple-negative	10.8%	77.0%

HR = hormone receptor.

TABLE 2
Description of T, N, and M Stages for Breast Cancer (10)

T stage	N stage	M stage
Tx: primary not assessable	Nx: not assessable	M0: no distant metastases
T0: no evidence of primary	N0: no regional LN	cM0(i+): tumor cells on circulating blood markers, marrow, or nonregional nodal tissue < 0.2 mm
Tis: ductal carcinoma in situ	N1: ipsilateral level I or II axillary LN	M1: distant metastases
T1: ≤20 mm	N2: clinically fixed/matted ipsilateral level I or II axillary LN or clinically detected ipsilateral internal mammary LN	
T2: >20 but ≤50 mm	N3: ipsilateral level III axillary LN, clinically detected ipsilateral internal mammary LN with level I or II axillary LN, or ipsilateral supraclavicular LN	
T3: >50 mm		
T4: any size with direct chest wall or skin extension		
T4d: IBC		

LN = lymph node.

increasing drug armamentarium available in the neoadjuvant setting also provides opportunities to evaluate biologic tumor changes related to the drug's mechanism of action.

Imaging. Accurate staging of LABC is essential to guide the initial treatment plan, and the primary modalities for initial staging are CT, bone scanning, and ¹⁸F-FDG PET/CT. National Comprehensive Cancer Network guidelines endorse ¹⁸F-FDG PET/CT for initial staging of at least stage 3 and in select cases of stage 2A or 2B disease in which CT or bone scanning is equivocal or there is a high suspicion of metastatic disease (11). Occult metastases occur in 6%–14% of patients undergoing initial staging ¹⁸F-FDG PET/CT, with increasing frequency as stage increases. Up to 30% of patients with stage 3 disease may be upstaged, with similar rates across triple-negative, HER2-positive, and HER2-negative disease (25–27).

Although ¹⁸F-FDG PET/CT is increasingly recognized as a single imaging modality for staging LABC (28), its clinical use for this purpose remains variable and even debated, driven mainly by

a lack of homogeneous prospective data on how upstaging to stage 4 disease affects clinical outcomes for those otherwise thought to have curable disease. A prospective, randomized trial in patients with stage 2B or 3 invasive ductal carcinomas confirmed more upstaging ($n = 43/184$, 23.3%) with ¹⁸F-FDG PET/CT than with conventional imaging ($n = 21/185$, 11.3%), leading to less curative-intent treatment in the ¹⁸F-FDG PET/CT group. Longer-term data are still needed to determine whether the changed treatment approach affected survival outcomes and whether these results will further standardize ¹⁸F-FDG PET/CT use for initial staging of 2B/3 disease. These data do provide evidence that tips the scales to further investigate ¹⁸F-FDG PET/CT as an imaging biomarker to explore novel treatment strategies in clinical indications with unmet needs, such as oligometastatic disease, and also demonstrate that randomized imaging trials testing relevant clinical endpoints in specific populations are feasible and of interest (29).

Beyond initial staging, a significant advantage of molecular imaging across many tumor types is visualization of changes indicating response or lack of response before anatomic imaging. Such early changes provide the opportunity for response-adapted therapy. Early during preoperative therapy, ¹⁸F-FDG PET/CT measures the pharmacodynamic response of breast cancer to predict the likelihood of a pCR at surgery (30,31), mostly studied in HER2-positive disease. In TBCRC026, 83 women with newly diagnosed stage 2 or 3 HER2-positive breast cancer underwent ¹⁸F-FDG PET/CT before and 15 d after starting pertuzumab and trastuzumab (31). Most strikingly, patients with less than a 40% decrease in SUV_{max} at day 15 were unlikely to achieve a pCR at surgery, with a high negative predictive value of 91% (31). A cycle 1, day 15, SUV_{max} of 3 or less in the primary tumor may also be associated with recurrence-free and overall survival at a 53.7-mo median follow-up (32).

The DIRECT trial (NCT05710328) aims to validate the results of TBCRC026 across several standard neoadjuvant regimens for HER2-positive LABC to subsequently use interim ¹⁸F-FDG PET/CT as an integral biomarker to test optimization strategies for patients with HER2-positive disease. PHERGain (NCT03161353) demonstrated

TABLE 3
TNM Stages for Early, Locally Advanced, and Metastatic Breast Cancer (10)

Category	Stage	TNM description
Early	1A	T1N0M0
	1B	T0/T1, N1mi, M0
	2A	T0/or T1, N1, M0
		T2, N0, M0
Locally advanced	2B	T2, N1, M0
	2B	T3, N0, M0
	3A	T0/T1/T2, N2, M0
		T3, N1/N2, M0
Metastatic	3B	T4, N0, N1/N2, M0
	3C	Any T, N3, M0
	4	Any T, Any N, M1

the feasibility of this response-adapted approach (30). In treatment arm B, early ^{18}F -FDG PET/CT adds chemotherapy to trastuzumab and pertuzumab if more than a 40% decline in SUV_{max} is not observed. The results of these important trials are eagerly awaited.

Studies of early ^{18}F -FDG PET/CT for predicting pCR in TNBC cancer have yielded mixed results and been limited by small sample sizes and various treatment regimens (33–36). Larger well-designed studies are needed, but this represents a clinical need for which treatment optimization would be highly beneficial.

Another advantage of PET imaging is the ability to perform dynamic imaging and derive tumor kinetics. In 75 patients with LABC who underwent ^{18}F -FDG PET at baseline and midway through neoadjuvant chemotherapy and after adjusting for ER status and axillary stage, models including kinetic parameters (K_1 and inhibition constant [flux]) for predicting pCR were more robust than SUV (area under the receiver-operating-characteristic curve, 0.97 vs. 0.84; $P = 0.005$). Further changes in K_1 , but not SUV, independently prognosticated for disease-free and overall survival (37). Practically, deriving kinetic PET parameters is more complex than deriving static parameters but is feasible. Kazerouni et al. evaluated changes in dynamic ^{18}F -FDG PET and dynamic contrast-enhanced MRI prospectively in 35 patients with LABC (38). They found that mid-treatment changes in both ^{18}F -FDG PET and dynamic contrast-enhanced MRI measures were predictive of pathologic response by residual cancer burden and recurrence-free survival after neoadjuvant chemotherapy. The 2 modalities offer complementary measures of metabolism and perfusion, and greater reductions in metabolism–perfusion mismatch were associated with improved recurrence-free survival. These noninvasive imaging-based markers could help guide treatment decisions and facilitate more personalized therapies for optimal patient outcomes.

^{18}F -3'-deoxy-3'-fluorothymidine (^{18}F -FLT) images tumor proliferation, correlates with Ki-67 (39), and has generated interest as a biomarker for predicting LABC response to preoperative chemotherapy. Crippa et al. found that changes in tumor ^{18}F -FLT SUV_{max} could separate responders with residual cancer burden 0 + 1 from those with residual cancer burden 2 + 3 and proposed a predictive score (40). The prospective phase 2 ACRIN 6688 study showed that changes in ^{18}F -FLT uptake could predict pCR after 1 cycle or at the completion of neoadjuvant therapy, but with a higher area under the curve (0.83 vs. 0.68) at the later time point (39). Additional smaller studies also demonstrated potential for serial ^{18}F -FLT as a predictive imaging biomarker (39,41–43).

Despite its promise, several factors limit ^{18}F -FLT's clinical applicability. ^{18}F -FLT is not widely available, nor is it FDA-approved. High uptake in the bone marrow and liver limit evaluation of these organs and use for initial staging. ^{18}F -FLT may predict pCR better after neoadjuvant therapy, whereas ^{18}F -FDG PET/CT may be predictive within 2 wk of starting neoadjuvant therapy, sparing exposure to ineffective therapy. Consequently, at present, ^{18}F -FLT PET is unlikely to supplant ^{18}F -FDG as an imaging biomarker for predicting pCR.

Furthermore, as more targeted drugs become available in the neoadjuvant setting for LABC, it will be essential to match the therapeutic drug mechanism of action with the radiotracer mechanism of uptake and even downstream processes to identify and optimize the use of molecular imaging biomarkers.

MBC

Treatment. MBC is generally not considered curable, although patients with HER2-positive breast cancer may experience long

disease-free periods because of highly efficacious therapies (44). If metastatic disease presents at diagnosis, surgical resection and radiation therapy are not typically options but may become appropriate if tumor burden affects the quality of life (45). Treatment recommendations are based on tumor biology, previous treatments, disease burden, patient's performance status, preferences, and comorbidities (46). The acquisition of metastatic tumor tissue and evaluation of genetic makeup for actionable mutations (PIK3CA, ESR1), tumor mutational burden, and microsatellite stability are recommended to inform systemic therapy. Medical genetics counseling and germline testing are also recommended for all patients with MBC because of the efficacy of poly(adenosine diphosphate-ribose) polymerase (PARP) inhibitors in patients harboring germline BRCA1, BRCA2, and PALB2 mutations. However, the treatment goal is often more individualized and centers around symptomatic management after providing systemic therapy (47).

For hormone receptor–positive tumors, first-line systemic therapy usually consists of endocrine therapy with a CDK4/6 inhibitor. Endocrine therapies include selective ER modulators (i.e., tamoxifen), aromatase inhibitors, and selective ER degraders (i.e., fulvestrant and elacestrant) (47). Prolongation of overall survival has been demonstrated with targeted treatments such as CDK4/6 inhibitors (ribociclib, abemaciclib), and prolongation of progression-free survival (PFS) has been demonstrated with CDK4/6 inhibitors, mammalian-target-of-rapamycin inhibitors (i.e., everolimus), and alpelisib (phosphatidylinositol-3'-kinase inhibitor) (47). Resistance to first-line therapy is common. For patients with tumors harboring *ESR1* mutations, elacestrant demonstrated improved PFS versus standard-of-care endocrine therapy and received FDA approval in 2023 (48). Once endocrine resistance has been established, systemic therapy options for patients with ER-positive, HER2-negative breast cancer include sequential chemotherapy and antibody–drug conjugates (49,50).

For HER2-positive MBC, first-line standard treatment is trastuzumab and pertuzumab (anti-HER2 monoclonal antibodies) and taxane chemotherapy (47). The second-line standard is presently a HER2-targeted antibody–drug conjugate (trastuzumab emtansine). However, many other highly effective HER2-targeted agents are available in the advanced disease setting. Most recently, in the DESTINY-Breast03 trial, trastuzumab deruxtecan demonstrated a significant improvement in overall survival versus trastuzumab emtansine (51).

For TNBC, chemotherapy is the treatment mainstay. For patients with PDL1-positive tumors (assessed by a combined positive score $\geq 10\%$), pembrolizumab plus chemotherapy improved PFS in the KEYNOTE 355 trial (52). Recently developed highly potent antibody–drug conjugates offer additional therapy options for patients with metastatic TNBC. Sacituzumab govitecan is a monoclonal antibody against Trop2 conjugated via a cleavable linker to SN-38, the active metabolite of irinotecan. The ASCENT trial reported improved PFS and overall survival for sacituzumab govitecan versus the physician's choice of chemotherapy for advanced TNBC and led to FDA approval in 2021 (53). For patients with germline BRCA-associated TNBC, incorporation of platinum is associated with higher objective response rates (54) and PARP inhibitors are recommended on the basis of the results of the OlympiAD and EMBRCA trials (55,56).

For patients with osseous metastases, regardless of breast cancer subtype, bone-modifying drugs such as bisphosphonates or denosumab are recommended to reduce the risk of skeleton-related

complications (hypercalcemia of malignancy, pathologic fractures, or need for radiation) (47).

Imaging. The current radiopharmaceuticals approved for assessing MBC are ^{18}F -FDG, ^{18}F -NaF, and ^{18}F -fluoroestradiol (^{18}F -FES). ^{18}F -FDG PET/CT better detects recurrent disease and lytic bone metastases than conventional imaging (i.e., CT, MRI, and bone scanning) (57,58). ^{18}F -FDG PET/CT is also a valuable biomarker for response and outcome, particularly for patients with bone-dominant or bone-only MBC, who are often excluded from drug trials because of lack of measurable disease by RECIST 1.1. In 28 women with bone-dominant or bone-only MBC, Peterson et al. demonstrated that changes on ^{18}F -FDG PET/CT after 4 mo of standard-of-care treatment predicted time to skeletal-related event and time to progression but not overall survival using modified PERCIST (59). Serial ^{18}F -NaF PET/CT did not predict time to skeletal-related event and time to progression but did predict overall survival. Makhlin et al. recently reported longer, albeit nonsignificant, PFS, overall survival, and time to skeletal-related event in 23 women with ER-positive bone-dominant or bone-only MBC (60). The lack of significance could be related to the small sample size. The FEATURE/EA1183 clinical trial (NCT04316117) is under way to validate these findings. If validated, ^{18}F -FDG PET/CT may serve as an imaging biomarker in routine practice and clinical trials for this group of patients.

Given that endocrine therapy is the backbone of treatment for ER-positive disease, the 2020 FDA approval of ^{18}F -FES has opened a potential door to advance precision medicine for patients with ER-positive MBC. ^{18}F -FES selectively binds ER, and in contrast to tissue and blood biomarkers, ^{18}F -FES PET/CT surveys the whole body to assess tumor burden heterogeneity, functional expression of the target, and ligand binding. This is relevant because over the disease course, hormone receptor status may change 30%–41% of the time, and loss of initial ER positivity increases risk of death compared with stable ER status (61).

^{18}F -FES PET/CT can help clarify ER tumor status and distinguish the origin of the metastasis in the setting of multiple primary breast malignancies (62). ^{18}F -FES PET/CT detects infiltrating lobular cancer metastases with higher sensitivity than ^{18}F -FDG (Fig. 1), particularly osseous metastases, though larger trials are required (63). In 16 women with ER-positive MBC undergoing ^{18}F -FDG PET and ^{18}F -FES PET before rintodestrant therapy ^{18}F -FES PET was prognostic, with a trend for longer PFS with higher ^{18}F -FDG and ^{18}F -FES uptake (64). Baseline tumor ^{18}F -FES uptake has also been suggested to predict responsiveness to endocrine therapy in those with ER-positive disease (65). EAI142 (NCT02398773) investigated the negative predictive value of ^{18}F -FES PET/CT for clinical benefit at 6 mo of endocrine treatment, and the results are awaited to help design future clinical trials. For predicting endocrine therapy response, ^{18}F -FES PET/CT primarily characterizes tumor for functional target, and correlation with concurrent ^{18}F -FDG PET/CT is likely important to quantify tumor heterogeneity, that is, burden of ER-positive and ER-negative metastases (16).

FUTURE DIRECTIONS OF MOLECULAR IMAGING AND THERAPY IN LABC

Other radiotracers have been or are being explored for molecular imaging of LABC. A full review of all of these is beyond this article's scope. In this section, several promising radiotracers that

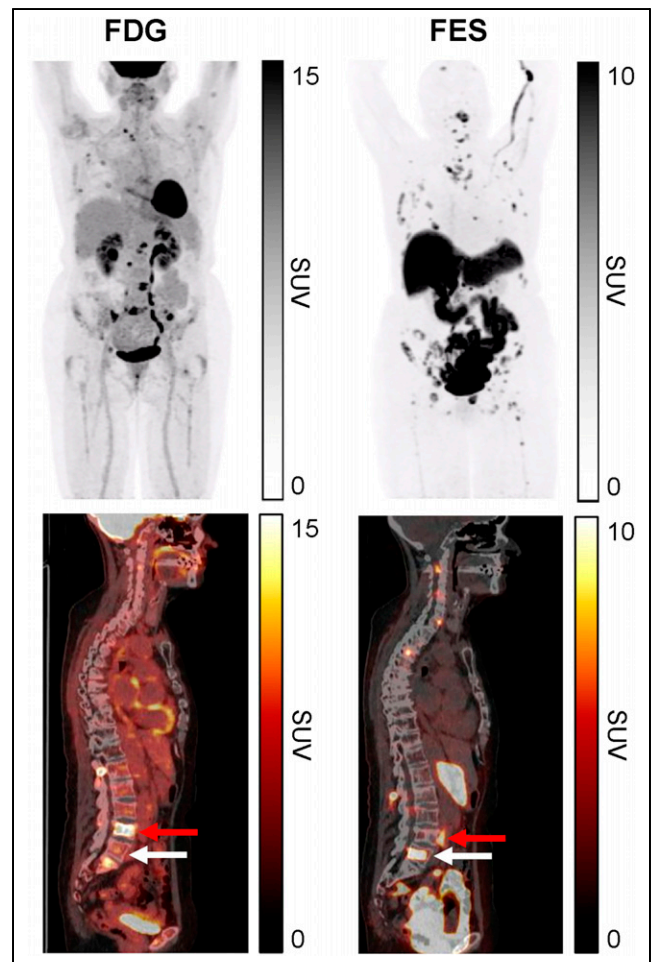


FIGURE 1. 66-y-old woman with de novo metastatic, ER-positive lobular breast cancer. ^{18}F -FES PET/CT shows more lesions than ^{18}F -FDG PET/CT. ER tumor heterogeneity is also demonstrated with both ^{18}F -FDG-negative, ^{18}F -FES-positive lesions (white arrows) and ^{18}F -FDG-positive, ^{18}F -FES-negative lesions (red arrows).

image pathways already targeted for treatment in LABC are reviewed.

As previously discussed, PARP inhibitors are efficacious in patients with metastatic HER2-negative breast cancer with germline BRCA1 and BRCA2 mutations (28). Several PARP-targeting agents have been radiolabeled (66,67). In early-phase clinical trials, ^{18}F -fluorothantrate uptake in tumors was variable but correlated with PARP-1 expression. In 4 patients with stage 3 or 4 breast cancer, 3 with increased ^{18}F -fluorothantrate uptake at baseline had a decline in uptake after PARP inhibitor therapy, with a partial response or stable disease. The fourth patient had no ^{18}F -fluorothantrate uptake at baseline and had subsequent disease progression. These, and other (68), early data on radiolabeled PARP inhibitors suggest a potential future role as a pharmacodynamic or predictive imaging biomarker for those being considered for PARP inhibitor therapy.

The HER2-targeted therapies trastuzumab and pertuzumab have both been radiolabeled for noninvasively imaging HER2 expression. In a study of 24 women with HER2-negative primary breast cancer, 6 had ^{89}Zr -pertuzumab uptake in metastases: 3 HER2-positive on biopsy, 2 negative, and 1 inconclusive (69). In a single-institution study of 50 patients (34 with HER2-positive

disease) and using an SUV_{max} cutoff of 3.2, ^{89}Zr -trastuzumab PET/CT correctly characterized HER2 status with a sensitivity of 76%, specificity of 62%, positive predictive value of 83%, and negative predictive value of 50%. Twenty percent of patients with multiple lesions had variable ^{89}Zr -trastuzumab uptake (70). Like ER, the global in vivo assessment of tumor heterogeneity overcomes the limitation of assessing HER2 status from a single biopsy site or when biopsy is not feasible (69–71). HER2-targeted PET could help identify those who may have otherwise been thought not likely to benefit from HER2-targeted therapy, particularly with emergence of the HER2-low category, which benefits from some of the newer HER2-targeted drugs, likely trastuzumab deruxtecan (49). Both trastuzumab and pertuzumab have also been radiolabeled with therapeutic radioisotopes for theranostic application, but work in this domain is early (72).

Endocrine therapy for advanced breast cancer currently targets the ER. Over time, resistance to endocrine therapy develops. PR imaging with ^{18}F -fluorofuranylprogesterone has been evaluated, and in vitro studies demonstrated that changes in PR expression could provide insight into the development of resistance to endocrine therapy (73).

Fibroblast activation protein has emerged as a new diagnostic and therapeutic target across a variety of cancer types (74), with multiple radiolabeled fibroblast activation protein inhibitors (FAPIs) under investigation. Stromal cancer-associated fibroblasts and tumor-associated macrophages express fibroblast activation protein in all breast cancer subtypes (75). Early studies of FAPI PET/CT in breast cancer were generally small, used different FAPI radiotracers, and included heterogeneous subtypes of breast cancer but consistently demonstrated increased FAPI uptake and tumor-to-background ratios in primary breast cancer, lymph node metastases, and bone metastases compared with ^{18}F -FDG (66,76). FAPI PET/CT appears advantageous for detecting smaller lesions and those breast cancers with low-level ^{18}F -FDG uptake (77).

Backhaus et al. evaluated the use of ^{68}Ga -FAPI-46 PET/MRI for predicting pCR after neoadjuvant therapy in 13 women with mixed subtypes of invasive breast cancer (78). After neoadjuvant therapy, those with pCR had a lower FAPI-to-background ratio than those with no pCR. A limited number of patients with MBC have been treated with ^{177}Lu - or ^{90}Y -labeled FAPI. Adverse events were manageable, with several instances of stable disease or partial response reported (79). Fibroblast activation protein–targeting breast cancer for imaging and therapy seems feasible. Still, the data are too early to draw conclusions about the future use of precision medicine in specific subtypes of breast cancer.

CONCLUSION

Given the heterogeneity of advanced breast cancer, precision medicine and targeting of different biomarkers have proven highly beneficial in treatment, with many other potential therapeutic targets currently under investigation. Several approved radiotracers are also now available or under investigation. Molecular imaging is uniquely positioned to aid in treatment planning by detecting disease, determining disease extent, and characterizing biomarker status in vivo and across the entire disease burden. As medical oncology and molecular imaging continue to evolve, it will remain essential to match processes based on biologic mechanisms for treatment and imaging to take advantage of the full potential of precision medicine. Finally, some of these imaging biomarkers may not need clinical implementation. They could also be helpful

as pharmacodynamic markers to determine optimal dosing for drug development or to study mechanisms of action or resistance.

ACKNOWLEDGMENTS

We thank Dr. Lanell Peterson for assistance with Figure 1.

REFERENCES

1. Odle TG. Precision medicine in breast cancer. *Radiol Technol*. 2017;88:401M–421M.
2. Sachdev JC, Sandoval AC, Jahanzeb M. Update on precision medicine in breast cancer. *Cancer Treat Res*. 2019;178:45–80.
3. Mankoff DA. A definition of molecular imaging. *J Nucl Med*. 2007;48(6):18N, 21N.
4. Li CI, Uribe DJ, Daling JR. Clinical characteristics of different histologic types of breast cancer. *Br J Cancer*. 2005;93:1046–1052.
5. Wasif N, Maggard M, Ko CY, Giuliano A. Invasive lobular vs. ductal breast cancer: a stage-matched comparison of outcomes. *Ann Surg Oncol*. 2010;17:1862–1869.
6. Orvieto E, Maiorano E, Bottiglieri L, et al. Clinicopathologic characteristics of invasive lobular carcinoma of the breast: results of an analysis of 530 cases from a single institution. *Cancer*. 2008;113:1511–1520.
7. Pestalozzi BC, Zahrieh D, Mallon E, et al. Distinct clinical and prognostic features of infiltrating lobular carcinoma of the breast: combined results of 15 International Breast Cancer Study Group clinical trials. *J Clin Oncol*. 2008;26:3006–3014.
8. Porter AJ, Evans EB, Foxcroft LM, Simpson PT, Lakhani SR. Mammographic and ultrasound features of invasive lobular carcinoma of the breast. *J Med Imaging Radiat Oncol*. 2014;58:1–10.
9. Howlader N, Cronin KA, Kurian AW, Andridge R. Differences in breast cancer survival by molecular subtypes in the United States. *Cancer Epidemiol Biomarkers Prev*. 2018;27:619–626.
10. Teichgraber DC, Guirguis MS, Whitman GJ. Breast cancer staging: updates in the *AJCC Cancer Staging Manual*, 8th ed., and current challenges for radiologists, from the *AJR* special series on cancer staging. *AJR*. 2021;217:278–290.
11. Amin AB, Edge SB, Greene FL, et al., eds. *AJCC Cancer Staging Manual*. 8th ed. Springer; 2018:589–636.
12. Jagsi R, Mason G, Overmoyer BA, et al. Inflammatory breast cancer defined: proposed common diagnostic criteria to guide treatment and research. *Breast Cancer Res Treat*. 2022;192:235–243.
13. Baselga J, Cortes J, Kim SB, et al. Pertuzumab plus trastuzumab plus docetaxel for metastatic breast cancer. *N Engl J Med*. 2012;366:109–119.
14. *BEST (biomarkers, endpoints, and other tools) resource*. National Center for Biotechnology Information website. <https://www.ncbi.nlm.nih.gov/books/NBK326791/>. Published 2016. Accessed January 11, 2024.
15. Stuart-Harris R, Shadbolt B, Palmqvist C, Chaudri Ross HA. The prognostic significance of single hormone receptor positive metastatic breast cancer: an analysis of three randomised phase III trials of aromatase inhibitors. *Breast*. 2009;18:351–355.
16. Linden HM, Stekhova SA, Link JM, et al. Quantitative fluoroestradiol positron emission tomography imaging predicts response to endocrine treatment in breast cancer. *J Clin Oncol*. 2006;24:2793–2799.
17. Wolff AC, Hammond MEH, Allison KH, et al. Human epidermal growth factor receptor 2 testing in breast cancer: American Society of Clinical Oncology/College of American Pathologists clinical practice guideline focused update. *J Clin Oncol*. 2018;36:2105–2122.
18. Cortazar P, Zhang L, Untch M, et al. Pathological complete response and long-term clinical benefit in breast cancer: the CTNeoBC pooled analysis. *Lancet*. 2014;384:164–172.
19. Nanda R, Liu MC, Yau C, et al. Effect of pembrolizumab plus neoadjuvant chemotherapy on pathologic complete response in women with early-stage breast cancer: an analysis of the ongoing phase 2 adaptively randomized I-SPY2 trial. *JAMA Oncol*. 2020;6:676–684.
20. Spring LM, Fell G, Arfe A, et al. Pathologic complete response after neoadjuvant chemotherapy and impact on breast cancer recurrence and survival: a comprehensive meta-analysis. *Clin Cancer Res*. 2020;26:2838–2848.
21. Geyer CE Jr, Garber JE, Gelber RD, et al. Overall survival in the OlympiA phase III trial of adjuvant olaparib in patients with germline pathogenic variants in BRCA1/2 and high-risk, early breast cancer. *Ann Oncol*. 2022;33:1250–1268.
22. Pagani O, Walley BA, Fleming GF, et al. Adjuvant exemestane with ovarian suppression in premenopausal breast cancer: long-term follow-up of the combined TEXT and SOFT trials. *J Clin Oncol*. 2023;41:1376–1382.
23. Harbeck N, Rastogi P, Martin M, et al. Adjuvant abemaciclib combined with endocrine therapy for high-risk early breast cancer: updated efficacy and Ki-67 analysis from the monarchE study. *Ann Oncol*. 2021;32:1571–1581.

24. Pusztai L, Foldi J, Dhawan A, DiGiovanna MP, Mamounas EP. Changing frameworks in treatment sequencing of triple-negative and HER2-positive, early-stage breast cancers. *Lancet Oncol.* 2019;20:e390–e396.
25. Riedl CC, Slobod E, Jochelson M, et al. Retrospective analysis of ¹⁸F-FDG PET/CT for staging asymptomatic breast cancer patients younger than 40 years. *J Nucl Med.* 2014;55:1578–1583.
26. Krammer J, Schnitzer A, Kaiser CG, et al. ¹⁸F-FDG PET/CT for initial staging in breast cancer patients: is there a relevant impact on treatment planning compared to conventional staging modalities? *Eur Radiol.* 2015;25:2460–2469.
27. Koolen BB, Vrancken Peeters MJ, Aukema TS, et al. ¹⁸F-FDG PET/CT as a staging procedure in primary stage II and III breast cancer: comparison with conventional imaging techniques. *Breast Cancer Res Treat.* 2012;131:117–126.
28. Gradishar WJ, Moran MS, Abraham J, et al. NCCN Guidelines[®] insights: breast cancer, version 4.2023. *J Natl Compr Canc Netw.* 2023;21:594–608.
29. Pusztai L. Systemic staging of locally advanced breast cancer: how hard to look? *J Clin Oncol.* 2023;41:3891–3894.
30. Pérez-García JM, Gebhart G, Ruiz Borrego M, et al. Chemotherapy de-escalation using an ¹⁸F-FDG-PET-based pathological response-adapted strategy in patients with HER2-positive early breast cancer (PHERGain): a multicentre, randomised, open-label, non-comparative, phase 2 trial. *Lancet Oncol.* 2021;22:858–871.
31. Connolly RM, Leal JP, Solnes L, et al. Updated results of TBCRC026: phase II trial correlating standardized uptake value with pathological complete response to pertuzumab and trastuzumab in breast cancer. *J Clin Oncol.* 2021;39:2247–2256.
32. Hennessy MA, Leal JP, Huang CY, et al. Correlation of SUV on early interim PET with recurrence-free survival and overall survival in primary operable HER2-positive breast cancer (the TBCRC026 trial). *J Nucl Med.* 2023;64:1690–1696.
33. Zucchini G, Quercia S, Zamagni C, et al. Potential utility of early metabolic response by ¹⁸F-2-fluoro-2-deoxy-D-glucose-positron emission tomography/computed tomography in a selected group of breast cancer patients receiving pre-operative chemotherapy. *Eur J Cancer.* 2013;49:1539–1545.
34. Koolen BB, Pengel KE, Wesseling J, et al. FDG PET/CT during neoadjuvant chemotherapy may predict response in ER-positive/HER2-negative and triple negative, but not in HER2-positive breast cancer. *Breast.* 2013;22:691–697.
35. Humbert O, Riedinger JM, Charon-Barra C, et al. Identification of biomarkers including ¹⁸F-FDG-PET/CT for early prediction of response to neoadjuvant chemotherapy in triple-negative breast cancer. *Clin Cancer Res.* 2015;21:5460–5468.
36. Groheux D, Biard L, Giacchetti S, et al. ¹⁸F-FDG PET/CT for the early evaluation of response to neoadjuvant treatment in triple-negative breast cancer: influence of the chemotherapy regimen. *J Nucl Med.* 2016;57:536–543.
37. Dunnwald LK, Doot RK, Specht JM, et al. PET tumor metabolism in locally advanced breast cancer patients undergoing neoadjuvant chemotherapy: value of static versus kinetic measures of fluorodeoxyglucose uptake. *Clin Cancer Res.* 2011;17:2400–2409.
38. Kazerouni AS, Peterson LM, Jenkins I, et al. Multimodal prediction of neoadjuvant treatment outcome by serial FDG PET and MRI in women with locally advanced breast cancer. *Breast Cancer Res.* 2023;25:138.
39. Kostakoglu L, Duan F, Idowu MO, et al. A phase II study of 3'-deoxy-3'-¹⁸F-fluorothymidine PET in the assessment of early response of breast cancer to neoadjuvant chemotherapy: results from ACRIN 6688. *J Nucl Med.* 2015;56:1681–1689.
40. Crippa F, Agresti R, Sandri M, et al. ¹⁸F-FLT PET/CT as an imaging tool for early prediction of pathological response in patients with locally advanced breast cancer treated with neoadjuvant chemotherapy: a pilot study. *Eur J Nucl Med Mol Imaging.* 2015;42:818–830.
41. Fantini L, Belli ML, Azzali I, et al. Exploratory analysis of ¹⁸F-3'-deoxy-3'-fluorothymidine (¹⁸F-FLT) PET/CT-based radiomics for the early evaluation of response to neoadjuvant chemotherapy in patients with locally advanced breast cancer. *Front Oncol.* 2021;11:601053.
42. Lubberink M, Dierckx W, Emmering J, et al. Validity of simplified 3'-deoxy-3'-[¹⁸F]fluorothymidine uptake measures for monitoring response to chemotherapy in locally advanced breast cancer. *Mol Imaging Biol.* 2012;14:777–782.
43. Romine PE, Peterson LM, Kurland BF, et al. ¹⁸F-fluorodeoxyglucose (FDG) PET or ¹⁸F-fluorothymidine (FLT) PET to assess early response to aromatase inhibitors (AI) in women with ER+ operable breast cancer in a window-of-opportunity study. *Breast Cancer Res.* 2021;23:88.
44. Swain SM, Miles D, Kim SB, et al. Pertuzumab, trastuzumab, and docetaxel for HER2-positive metastatic breast cancer (CLEOPATRA): end-of-study results from a double-blind, randomised, placebo-controlled, phase 3 study. *Lancet Oncol.* 2020;21:519–530.
45. Khan SA, Zhao F, Goldstein LJ, et al. Early local therapy for the primary site in de novo stage IV breast cancer: results of a randomized clinical trial (EA2108). *J Clin Oncol.* 2022;40:978–987.
46. Cardoso F, Senkus-Konefka E, Fallowfield L, Costa A, Castiglione M, Group EGW. Locally recurrent or metastatic breast cancer: ESMO clinical practice guidelines for diagnosis, treatment and follow-up. *Ann Oncol.* 2010;21(suppl 5):v15–v19.
47. Harbeck N, Gnant M. Breast cancer. *Lancet.* 2017;389:1134–1150.
48. Bidard FC, Kaklamani VG, Neven P, et al. Elacestrant (oral selective estrogen receptor degrader) versus standard endocrine therapy for estrogen receptor-positive, human epidermal growth factor receptor 2-negative advanced breast cancer: results from the randomized phase III EMERALD trial. *J Clin Oncol.* 2022;40:3246–3256.
49. Modi S, Jacot W, Yamashita T, et al. Trastuzumab deruxtecan in previously treated HER2-low advanced breast cancer. *N Engl J Med.* 2022;387:9–20.
50. Rugo HS, Bardia A, Marme F, et al. Sacituzumab govitecan in hormone receptor-positive/human epidermal growth factor receptor 2-negative metastatic breast cancer. *J Clin Oncol.* 2022;40:3365–3376.
51. Hurvitz SA, Hegg R, Chung WP, et al. Trastuzumab deruxtecan versus trastuzumab emtansine in patients with HER2-positive metastatic breast cancer: updated results from DESTINY-Breast03, a randomised, open-label, phase 3 trial. *Lancet.* 2023;401:105–117.
52. Cortes J, Cescon DW, Rugo HS, et al. Pembrolizumab plus chemotherapy versus placebo plus chemotherapy for previously untreated locally recurrent inoperable or metastatic triple-negative breast cancer (KEYNOTE-355): a randomised, placebo-controlled, double-blind, phase 3 clinical trial. *Lancet.* 2020;396:1817–1828.
53. Bardia A, Hurvitz SA, Tolaney SM, et al. Sacituzumab govitecan in metastatic triple-negative breast cancer. *N Engl J Med.* 2021;384:1529–1541.
54. Tutt A, Tovey H, Cheang MCU, et al. Carboplatin in BRCA1/2-mutated and triple-negative breast cancer BRCAness subgroups: the TNT trial. *Nat Med.* 2018;24:628–637.
55. Litton JK, Hurvitz SA, Mina LA, et al. Talazoparib versus chemotherapy in patients with germline BRCA1/2-mutated HER2-negative advanced breast cancer: final overall survival results from the EMBRACA trial. *Ann Oncol.* 2020;31:1526–1535.
56. Robson ME, Tung N, Conte P, et al. OlympiAD final overall survival and tolerability results: olaparib versus chemotherapy treatment of physician's choice in patients with a germline BRCA mutation and HER2-negative metastatic breast cancer. *Ann Oncol.* 2019;30:558–566.
57. Groheux D. FDG-PET/CT for primary staging and detection of recurrence of breast cancer. *Semin Nucl Med.* 2022;52:508–519.
58. Paydary K, Seraj SM, Zadeh MZ, et al. The evolving role of FDG-PET/CT in the diagnosis, staging, and treatment of breast cancer. *Mol Imaging Biol.* 2019;21:1–10.
59. Peterson LM, O'Sullivan J, Wu QV, et al. Prospective study of serial ¹⁸F-FDG PET and ¹⁸F-fluoride PET to predict time to skeletal-related events, time to progression, and survival in patients with bone-dominant metastatic breast cancer. *J Nucl Med.* 2018;59:1823–1830.
60. Makhlin I, Korhonen KE, Martin ML, et al. ¹⁸F-FDG PET/CT for the evaluation of therapy response in hormone receptor-positive bone-dominant metastatic breast cancer. *Radiol Imaging Cancer.* 2022;4:e220032.
61. Lindström LS, Karlsson E, Wilking UM, et al. Clinically used breast cancer markers such as estrogen receptor, progesterone receptor, and human epidermal growth factor receptor 2 are unstable throughout tumor progression. *J Clin Oncol.* 2012;30:2601–2608.
62. Boers J, Loudini N, Brunsch CL, et al. Value of ¹⁸F-FES PET in solving clinical dilemmas in breast cancer patients: a retrospective study. *J Nucl Med.* 2021;62:1214–1220.
63. Ulaner GA, Jhaveri K, Chandrapaty S, et al. Head-to-head evaluation of ¹⁸F-FES and ¹⁸F-FDG PET/CT in metastatic invasive lobular breast cancer. *J Nucl Med.* 2021;62:326–331.
64. Iqbal R, Yaqub M, Bektas HO, et al. [¹⁸F]FDG and [¹⁸F]FES PET/CT imaging as a biomarker for therapy effect in patients with metastatic ER+ breast cancer undergoing treatment with rintodestrant. *Clin Cancer Res.* 2023;29:2075–2084.
65. Dehdashti F, Mortimer JE, Trinkaus K, et al. PET-based estradiol challenge as a predictive biomarker of response to endocrine therapy in women with estrogen-receptor-positive breast cancer. *Breast Cancer Res Treat.* 2009;113:509–517.
66. O'Brien SR, Ward R, Wu GG, et al. Other novel PET radiotracers for breast cancer. *PET Clin.* 2023;18:557–566.
67. Puentes LN, Makvandi M, Mach RH. Molecular imaging: PARP-1 and beyond. *J Nucl Med.* 2021;62:765–770.
68. Makvandi M, Pantel A, Schwartz L, et al. A PET imaging agent for evaluating PARP-1 expression in ovarian cancer. *J Clin Invest.* 2018;128:2116–2126.
69. Ulaner GA, Carrasquillo JA, Riedl CC, et al. Identification of HER2-positive metastases in patients with HER2-negative primary breast cancer by using HER2-targeted ⁸⁹Zr-pertuzumab PET/CT. *Radiology.* 2020;296:370–378.
70. Dehdashti F, Wu N, Bose R, et al. Evaluation of [⁸⁹Zr]trastuzumab-PET/CT in differentiating HER2-positive from HER2-negative breast cancer. *Breast Cancer Res Treat.* 2018;169:523–530.
71. Ulaner GA, Hyman DM, Lyashchenko SK, Lewis JS, Carrasquillo JA. ⁸⁹Zr-trastuzumab PET/CT for detection of human epidermal growth factor receptor 2-positive metastases in patients with human epidermal growth factor receptor 2-negative primary breast cancer. *Clin Nucl Med.* 2017;42:912–917.

72. Miladinova D. Molecular imaging of HER2 receptor: targeting HER2 for imaging and therapy in nuclear medicine. *Front Mol Biosci.* 2023;10:1144817.
73. Kumar M, Salem K, Jeffery JJ, Yan Y, Mahajan AM, Fowler AM. Longitudinal molecular imaging of progesterone receptor reveals early differential response to endocrine therapy in breast cancer with an activating ESR1 mutation. *J Nucl Med.* 2021;62:500–506.
74. Kratochwil C, Flechsig P, Lindner T, et al. ⁶⁸Ga-FAPI PET/CT: tracer uptake in 28 different kinds of cancer. *J Nucl Med.* 2019;60:801–805.
75. Tchou J, Zhang PJ, Bi Y, et al. Fibroblast activation protein expression by stromal cells and tumor-associated macrophages in human breast cancer. *Hum Pathol.* 2013;44:2549–2557.
76. Evangelista L, Filippi L, Schillaci O. What radiolabeled FAPI pet can add in breast cancer? A systematic review from literature. *Ann Nucl Med.* 2023;37:442–450.
77. Alçın G, Arslan E, Aksoy T, et al. ⁶⁸Ga-FAPI-04 PET/CT in selected breast cancer patients with low FDG affinity: a head-to-head comparative study. *Clin Nucl Med.* 2023;48:e420–e430.
78. Backhaus P, Burg C, Asmus I, et al. Initial results of ⁶⁸Ga-FAPI-46 PET/MRI to assess response to neoadjuvant chemotherapy in breast cancer. *J Nucl Med.* 2023;64:717–723.
79. Yadav MP, Ballal S, Martin M, et al. Therapeutic potential of [¹⁷⁷Lu]Lu-DOTAGA-FAPi dimers in metastatic breast cancer patients with limited treatment options: efficacy and safety assessment. *Eur J Nucl Med Mol Imaging.* November 7, 2023 [Epub ahead of print].