

Evaluation of Ventricular Function in Patients with Coronary Artery Disease

Thomas P. Rocco, Vasken Dilsizian, Alan J. Fischman, and H. William Strauss

Division of Nuclear Medicine, Department of Radiology, Massachusetts General Hospital, and Harvard Medical School, Boston, Massachusetts

The recent expansion of interventional cardiovascular technologies has stimulated a concomitant expansion of noninvasive cardiac studies, both to assist in diagnosis and to evaluate treatment outcomes. Radionuclide ventricular function studies provide a reliable, reproducible means to quantify global left ventricular systolic performance, a critical determinant of prognosis in patients with cardiovascular disease. In addition, the ability to evaluate regional left ventricular wall motion and to assess ventricular performance during exercise have secured a fundamental role for such studies in the screening and treatment of patients with coronary artery disease. Radionuclide techniques have been extended to the evaluation of left ventricular relaxation/filling events, left ventricular systolic/diastolic function in the ambulatory setting, and with appropriate technical modifications, to the assessment of right ventricular performance at rest and with exercise. As a complement to radionuclide perfusion studies, cardiac blood-pool imaging allows for thorough noninvasive description of cardiac physiology and function in both normal subjects and in patients with a broad range of cardiovascular diseases.

J Nucl Med 30:1149-1165, 1989

Recent developments in interventional cardiac catheterization technology have shifted the emphasis in the invasive laboratory from pure diagnosis to diagnosis and treatment. This transition has stimulated a concomitant expansion in the role of noninvasive cardiac evaluation, both to assist in diagnosis (and thereby streamline the catheterization procedure) and to evaluate the outcome of interventional procedures, such as angioplasty/valvuloplasty or bypass surgery. This article will review the data that can be obtained from radionuclide ventriculography for the evaluation of systolic and diastolic function in patients with coronary artery disease (CAD). The technical aspects of data acquisition and the physiology of cardiac contraction are considered first, followed by a section on clinical applications of radionuclide cardiac studies to measure systolic function. A separate section detailing the technical, physiologic, and clinical application of diastolic measurements follows, reflecting the growing recognition of abnormal left ventricular (LV) relaxation and filling in a variety of clinical cardiac syndromes.

Received Dec. 21, 1988; revision accepted Mar. 1, 1989.

For reprints contact: H. William Strauss, MD, Div. of Nuclear Medicine, Massachusetts General Hospital, 55 Fruit St., Boston MA 02114.

SYSTOLE

Biology and Mechanism of Cardiac Contraction

Anatomy. The heart consists of two syncytiae of striated muscle, atrial and ventricular, attached to a framework of fibrous tissue that contains the valves and their supporting structures. The prominent organelles in each myocyte are the contractile apparatus (thin strands of actin and thick strands of myosin), and many mitochondria (Fig. 1); each cell is supplied by a single capillary. The sarcolemma, or muscle cell membrane, forms tight junctions (intercalated disks) at the boundaries of individual cells. These junctions have extremely low electrical resistance, that facilitates rapid passage of the action potential between cells. The functional result of this arrangement is that excitation of a single cell causes depolarization of the entire syncytium, allowing coordinated mechanical contraction.

Biology of Contraction

As an action potential sweeps over the sarcolemma it also spreads to the interior of the cell, causing release of calcium ions from the sarcoplasmic reticulum into the sarcoplasm. Intracellular Ca^{++} levels rise from 10^{-7} to 10^{-5} mEq/l: this increased calcium level catalyzes the interaction of actin and myosin by inhibiting the repressor effects of troponin I and contraction ensues.

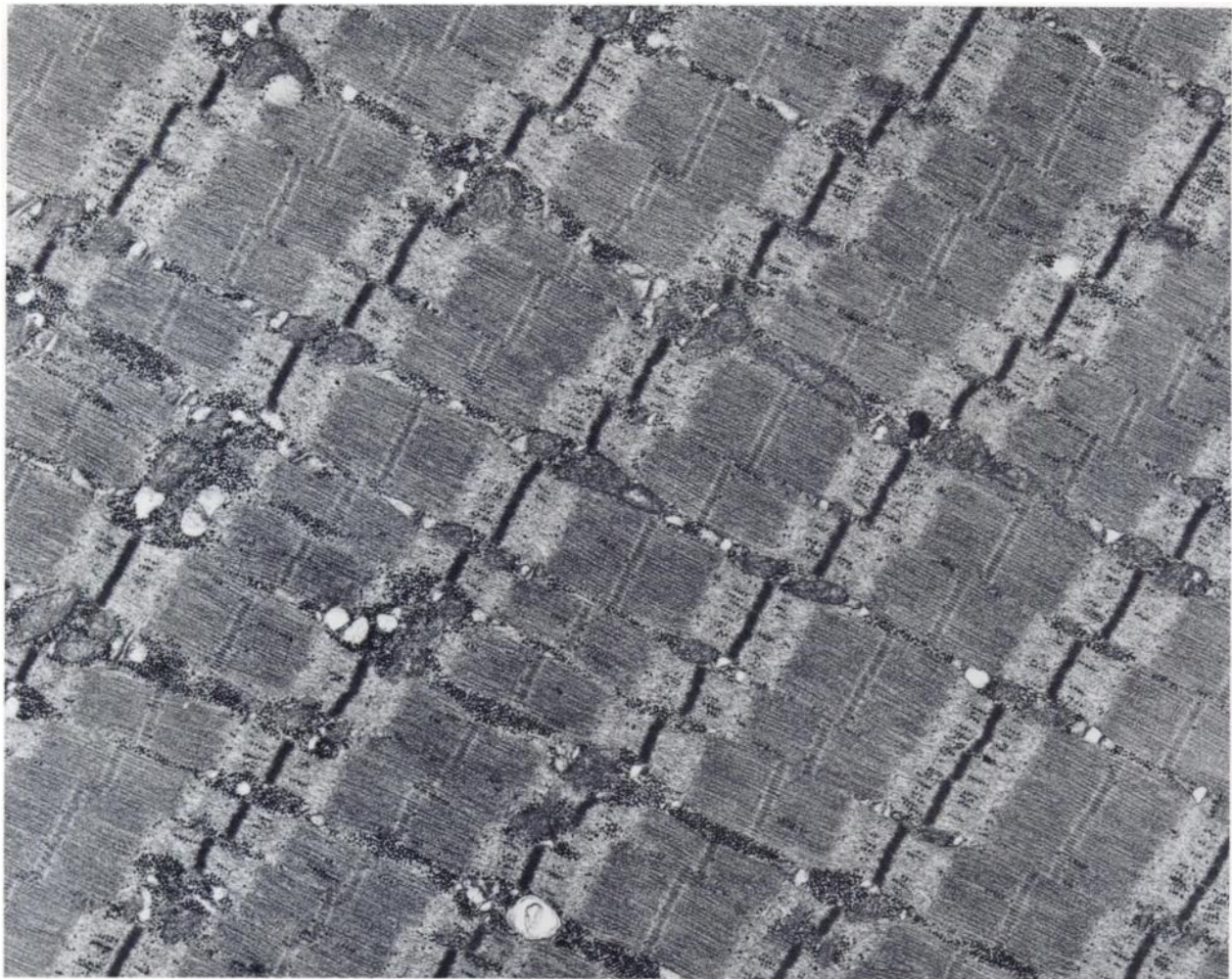


FIGURE 1

Electron micrograph (20,000 \times) of a human skeletal muscle biopsy specimen showing characteristic banding. Alternating dark broad bands (A bands) and light broad bands (I bands) are seen. The I bands contain a dark line, the Z band, whereas the central dark and light bands of the A bands are called the M and H bands, respectively. The area between Z bands is known as a sarcomere. In addition, glycogen granules, mitochondria, and sarcotubular elements are easily recognized.

Relaxation (i.e., the deactivation of the actin-myosin complex) occurs when the protein phospholamban catalyzes the transport of Ca^{++} back to the sarcoplasmic reticulum (1). Both the release and uptake of calcium at the sarcoplasmic reticulum are ATP (energy) dependent. Thus, both contraction and relaxation are active, energy requiring processes, and may be affected by disease processes which impair the delivery or utilization of energy substrates.

Hemodynamics of Cardiac Contraction

The relationship of electrical events to left ventricular pressure and volume is shown in Figure 2. Following the QRS complex, the ventricular syncytium is depolarized and contraction begins. The onset of shortening causes increased intraventricular pressure, which results in closure of the AV valves; as myocyte shortening

continues, intraventricular pressure increases without a change in volume (isovolumic systole). During this isovolumetric phase, the left ventricle becomes more spherical as a consequence of longitudinal fiber shortening and wall thickening. Ultimately, ventricular pressure exceeds diastolic pressure in the aorta or pulmonary artery and ventricular ejection ensues. The maximal rate of rise of intraventricular pressure (dp/dt) occurs just prior to the inward motion of the ventricular wall. Potential energy (developed as pressure during isovolumic systole) is now converted to kinetic energy as blood is ejected into the great arteries.

Ventricular ejection consists of two phases: (a) the early active phase, during which myocyte shortening continues and (b) a later passive phase, when no additional shortening occurs. Under normal circumstances the majority of ventricular emptying occurs during the

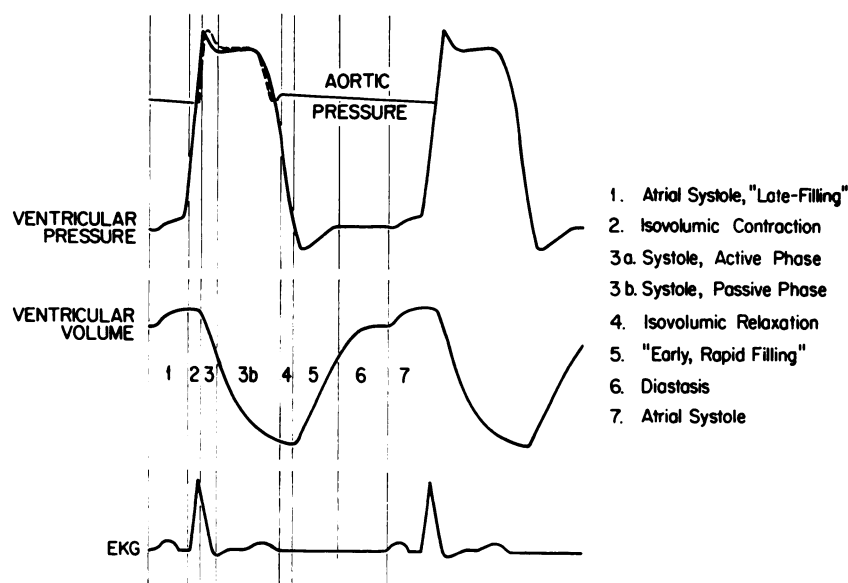


FIGURE 2
Temporal relationship of relative left ventricular pressure and volume to the surface EKG (schematic) for a single cardiac cycle.

active phase, which concludes when the ejection velocity of blood reaches a maximum. The momentum imparted to blood during the active phase of systole permits continued emptying of the ventricle despite the fact that ascending aortic pressure exceeds ventricular pressure during the late passive phase of ejection. The duration of this passive phase of systole varies with the state of peripheral resistance. For example, with vasodilation, systole is prolonged, and the passive phase contributes a relatively greater percentage to overall stroke volume. Closure of the semilunar valves marks the end of the passive phase and ventricular relaxation begins (2). The pressure and volume events characterizing ventricular relaxation and filling are detailed in the section on diastole.

The major parameter of interest during systole is the ejection fraction. While many other indices of systolic function can be calculated, such as systolic ejection rate, they offer limited clinically relevant information.

Measurement of Systolic Function

Evaluation of ventricular function is useful for diagnosing myocardial ischemia (3-6), identifying patients at high risk for future cardiac events (7-17), and selecting appropriate management strategy. Serial measurements can be recorded to evaluate the effect of mechanical (bypass surgery or angioplasty) or medical therapy on ventricular function (18-24).

Radionuclide angiography (RNA) may be performed by first-pass or equilibrium techniques. While the techniques of data recording and the radiopharmaceuticals differ, (Table 1) the quantitation of global ventricular function (ejection fraction and end diastolic volume) produce similar results with both techniques. The selection of the data recording technique best suited to the clinical question to be addressed will be described below.

Radiopharmaceuticals

Radiopharmaceutical requirements for first-pass studies are a high photon flux (all left ventricular function data must be collected in <10 sec) at a low delivered radiation dose. Clinically, ^{99m}Tc -labeled pharmaceuticals are used most often for this purpose. Since the agents transverse the lungs, they permit measurements of both right and left ventricular function. The relatively short residence times of ^{99m}Tc -labeled sulfur colloid and diethylenetriaminepentaacetic acid (DTPA) in the vasculature allow two or three observations to be recorded in a short interval of time (e.g., rest and stress), each with a low blood background. These agents have the advantage of an extremely low radiation burden to the patients.

The radiopharmaceuticals for equilibrium measurements can also be employed for first pass studies, but are typically used if only a single measurement is desired. These radiopharmaceuticals should have an unchanging concentration in the blood pool during the interval of measurement. Two ^{99m}Tc -labeled agents, red cells and albumin, meet this criteria. The two agents differ in their target to background activity ratio (better with red cells) and their ease of use (better with albumin, which is available as a multi-dose kit, while each dose of red cells must be individually prepared). Image contrast is usually better with red blood cells, making this the preferred radiopharmaceutical for most applications. In some severely ill patients, however, it is diffi-

TABLE 1
Radiopharmaceuticals for Blood-Pool Imaging

First pass	Equilibrium
^{99m}Tc SC	^{99m}Tc albumin
^{99m}Tc DTPA	^{99m}Tc RBCs
^{99m}Tc pertechnetate	

cult to get good labeling of red cells. In these patients, it may be preferable to use albumin.

First Pass

Following rapid injection of 10–20 mCi through an intravenous catheter placed in the median antecubital vein, sequential images of the distribution of radioactivity are recorded as the bolus passes through the heart and great vessels. The tracer is administered in a small volume by a modification of the Oldendorf technique (25). Data can be recorded with the patient in the supine or upright position. The 30° right anterior oblique projection is usually used to optimize separation of the ventricles and atria, and to view the ventricles parallel to their long axes. While the RAO view maximizes overlap of the right and left ventricles, this is not a problem in most patients, since the timing of tracer appearance reliably identifies each chamber sequentially.

The radionuclide data may be recorded as a sequence of images (ungated) or in synchrony with the patient's electrocardiogram (gated). If the data collection is ungated, a minimum framing rate of 25 frames/sec (40 msec/frame) is recommended to permit an accurate determination of end systole; this follows from the fact that the duration of end systole is 80 msec at rest; as required from sampling theory, accurate quantitation would require a twofold greater sampling frequency, i.e. 40 msec. If the data collection is gated, two separate data sets are recorded: (a) the right heart phase (from bolus injection to lung visualization) and (b) the left heart phase (from left atrium to aortic visualization). Usually six to seven cardiac cycles are summed in each phase of the study.

Advantages of the first pass technique are the high target-to-background ratio, rapidity of imaging, and the temporal separation of the right and left ventricles. While repeated assessment of cardiac function under rapidly varying conditions is possible with repeated injections, the technique is impractical for more than three determinations at one time. If many measurements are desired, as may occur during a pharmacologic intervention, short (i.e., 2 min) equilibrium collections should be used.

Equilibrium

Five to 10 minutes after injection of an equilibrium radiopharmaceutical (usually 20–25 mCi), data are recorded in a computer system synchronized with the R-wave of the patient's electrocardiogram. While few counts are recorded during a single portion of any one cardiac cycle, the summation of information from ~800–1,000 cycles in phase produces an average cardiac cycle with high resolution. Images are usually acquired in three standard projections: anterior, left anterior oblique, and left posterior oblique (or left lateral) for a

preset count of at least 500k/frame (count density of about 300 cts/cm² over the LV). The combination of high count density and multiple views enhances the sensitivity of equilibrium images for the detection of wall motion abnormalities.

Gating Requirements and Number of Frames

The triggering signal for the computer should be a rapidly changing signal that occurs once/cardiac cycle. The R wave of the patient's EKG usually fulfills this requirement. However, in patients with low voltage on their EKG, tall peaked T waves, or in patients with pacemakers, the gating signal may be ambiguous, leading to two or more gating signals/beat. If data are recorded under this circumstance, ventricular function will appear to be substantially reduced, leading to an erroneous interpretation. To avoid this problem the electrodes should be moved until a single triggering signal for each cardiac cycle is provided to the computer.

Division of the R-R interval into at least 16 frames per cycle (<50 msec/frame) provides adequate temporal resolution for clinical evaluation of regional wall motion and ejection fraction at rest (heart rate of 80); for exercise studies data should be recorded for shorter intervals (<25 msec/frame). To assess regional ejection fraction and/or diastolic filling parameters, a minimum of 32 frames per cycle is necessary, even at resting heart rates. Wide changes in heart rate during gated data acquisition, due to multiple premature contractions, will underestimate global systolic function. Although arrhythmia filtering can be used to reject beats outside of a specified R-R interval, this approach significantly prolongs acquisition time and may not improve the quality of the resultant data. Since contractile function on any given beat is dependent on the preceding beat, it is better to control the arrhythmia prior to recording the data, if at all possible, rather than filter the arrhythmic beats. In general, a gated scan is not materially degraded by aberrant beats of <10% incidence.

To optimize the detection of circumscribed wall motion abnormalities, pixel size in the computer should be <5 mm (some state-of-the-art computers have sufficient image memory to permit recording 32 frames/cardiac cycle at a spatial resolution of 2 mm/pixel).

Imaging Instrumentation

The extremely high count rates that are characteristic of first pass studies require either a multi-crystal camera or an Anger camera modified to handle over 200,000 events/sec in the energy window. A standard or large field-of-view gamma camera equipped with a general all-purpose collimator provides an acceptable trade-off between sensitivity and resolution to record rest equilibrium blood-pool images. The limited time for data collection in exercise studies usually requires a change

from the all purpose to a high-sensitivity collimator (sensitivity improvement by a factor of 2).

Radionuclide Ventriculography: Image Interpretation

The data are analyzed in two parts: qualitative inspection of the data as an endless cinematic loop of the cardiac cycle, and quantification of volumes and function.

From inspection of the cinematic display, the size of the chambers and great vessels are determined, regional wall motion is assessed, thickness of the muscular wall is estimated, and evidence is sought for pericardial effusion, and/or para-cardiac spaces/masses. Normal subjects of average body build empty at least half the end-diastolic volume of their right and left ventricles each beat (normal LVEF ranges from 50–65%); shorten the long axis of their left ventricle by >25% and the short axis >45%; and have left ventricular end-diastolic volumes of <200 ml (114 ml/m²) (26). Inspection permits the subjective grading of regional wall motion into normal (regional shortening of a radius of at least 25%), hypokinetic (regional shortening of a radius of 10–25%), akinetic (regional shortening of 0–5%) and dyskinetic (systolic expansion), based on a comparison of end diastolic to end systolic outlines. Quantitative approaches to regional shortening measurements have been described, but their precision is limited by the relatively poor (>5 mm) spatial resolution of existing systems.

Ejection Fraction

The ejection fraction, usually calculated by dividing the stroke counts by the background corrected end-diastolic counts, is the most important and widely applied indicator of global ventricular function. It is highly reproducible and provides prognostic information in patients with CAD (7–17). The values for ejection fraction obtained by either first-pass or equilibrium techniques method are comparable.

The ejection fraction is best calculated using a count-based technique; this method is independent of geometric considerations and permits the use of automatic edge detection programs to compute the ejection fraction from the left anterior oblique images on equilibrium studies, with high accuracy and reproducibility (27). In the count based method the ejection fraction is derived from the ventricular time-activity curves, which closely parallels the angiographic time-volume curve (28).

Prior to calculation of the ejection fraction, the total counts in each frame of the data collection should be normalized, and a spatial and temporal smoothing of the data performed. A region of interest is then assigned over the left ventricle using either a manual, threshold, second derivative or phase analysis (see below) algo-

rithm, to define the edges of the ventricle in each frame. Since ~50% of the total counts measured in the left ventricular region of interest arise from outside the ventricle, a representative periventricular zone of background must be selected to differentiate “true” LV counts from background. The background subtracted counts in the left ventricle in each frame are then used to generate the time-activity curve. From the time-activity curve, ejection fraction and rates of ejection and filling can be obtained.

An alternative approach for generating time-activity curves from gated equilibrium scans uses a single region of interest, based on the end-diastolic frame. The advantage of using a single region of interest is that it provides smoother time-activity curves, especially useful for calculating rates of ejection and filling. The calculated ejection fraction by this method is usually about 5% lower than that obtained by the variable region of interest technique.

For the first pass technique, ejection fraction is calculated by assigning a region of interest over the ventricle and generating a time-activity curve with a temporal resolution of at least 25 frames per second. The six to seven cardiac cycles that have maximal activity are then summed in phase to create a composite curve from which ejection fraction is calculated.

Ventricular Volume

Left ventricular volumes can be calculated by either a geometric (area length) method (29) or by a count-based method (30). The geometric method requires calibration of the gamma-camera to determine the relative size of the left ventricle in each of two views. The volume of the chamber is then calculated using either an area/length formula or the Simpson rule approach (to calculate the volume of irregularly shaped objects). A minimum interobserver variation of ~35 ml (~20%) can be expected with the geometric approach, due to variation defining the borders of the chamber. The count based method requires a blood sample as a counting standard and correction for attenuation of blood-pool activity by overlying chest wall. The count based method has better precision than the geometric approach (minimum error of ~10%), but may have substantial inaccuracy due to the difficulty computing attenuation.

Regional Wall Motion

Regional wall motion is evaluated qualitatively by viewing the cardiac cycle in a closed-loop cine display in multiple projections, with myocardial segments described subjectively as either normal, hypokinetic, akinetic, or dyskinetic, as previously outlined. Alternatively, quantitation of regional function can be achieved either by measuring regional radial shortening (as done

in contrast ventriculography) (31), or by assessing regional ejection fraction by sector analysis (32–35). These two approaches differ fundamentally: contrast studies measure changes in edges, while regional ejection fraction measures changes in volumes. Quantitation of regional function has been reported to increase the specificity of detecting coronary artery disease despite the problem of spatial resolution noted earlier.

In addition to the standard methods of analyzing blood-pool data, functional images, such as ejection fraction images (36), paradox images (37), and amplitude and phase images (38,39) can be readily calculated. These images have been useful in characterizing regional asynergy and asynchrony.

Phase Analysis

Functional images can reduce complex information into a single image representing both anatomy and physiology. The stroke volume image and the paradox image provide useful data but do not take full advantage of the cyclic nature of the gated blood-pool scan. A more general method of data evaluation is provided by the technique of Fourier analysis. Briefly, any periodic function can be represented mathematically by a sum of sinusoidal and cosinusoidal curves of various amplitude and frequency. To generate functional images of the heart, Fourier analysis is employed to approximate the volume curve with the first Fourier harmonic, a pure sine or cosine function with a period equal to the period of the cardiac cycle.

Analysis of a time-activity curve by Fourier transformation yields the best fit values for amplitude and phase. When this analysis is performed for each pixel in an image, amplitude and phase images are obtained. The amplitude image is qualitatively similar to the stroke volume image, but has two important differences: (a) The stroke volume image is calculated from only two points in time in the cardiac cycle, while the amplitude image is computed from the entire time-activity curve of each pixel; (b) The atria are detectable in the amplitude image (unlike the stroke volume image where negative changes in activity are ignored, amplitude image values are always positive since, by convention, the positive square root is always taken).

The phase image reflects the timing of regional ejection and is not determined solely by any particular cardiac event, but depends on function in general. Since the amplitude and phase images are computed from entire local time-activity curves, they possess smaller uncertainties than simpler images such as the stroke volume image.

Fourier analysis of gated blood-pool data will never replace the subjective evaluation of the cinematically displayed data by an experienced observer, but the additional quantification provided by this technique has important clinical applications. The analysis of wall

motion is dependent on changes in edges, while phase and amplitude data primarily reflect changes in regional volume. These two phenomena are often similar, but are not necessarily identical. As a result it is not useful to consider phase and amplitude analysis as a quantitative means of assessing regional wall motion. Phase analysis may be useful to follow subtle changes in ventricular function after medical and/or surgical intervention and has been particularly useful for evaluating premature ventricular contraction and accessory conduction pathways.

CORONARY ARTERY DISEASE: STRATEGIES FOR DETECTION

Two major factors determine the prognosis of patients with coronary heart disease: (a) the degree of *irreversible* myocardial damage (the consequence of prior infarction) and (b) the extent of *jeopardized*, but viable, myocardium (the severity of underlying disease). The impact of irreversible myocardial damage is primarily defined by abnormalities in regional and global systolic function at rest, while the effect of provokable ischemia is defined by transient impairment of systolic performance during exercise. Most patients with CAD and no prior infarction have normal ventricular function at rest; a subgroup of these patients may have reversible left ventricular dysfunction at rest. This dissociation between function and viability has been referred to as “stunned” or “hibernating” myocardium (35,40–42) depending on the acuity of the ischemic insult (acute vs. subacute/chronic, respectively). Augmentation of blood flow to the ischemic but viable muscle results in improved global and regional function (35,40–42).

Since regional wall motion abnormalities may appear before symptoms of angina or ischemic ECG abnormalities (43,44), exercise radionuclide angiography has been proposed as a potentially sensitive technique for detecting ischemia. Data are recorded in the modified best septal left anterior oblique view, to isolate the left ventricle (45). In this view, the septum represents left anterior descending artery territory (Fig. 3) and the posterolateral segment represents left circumflex artery territory; the right coronary artery may contribute to posterolateral perfusion depending on the dominance of the circulation.

In 1977, Borer observed that normal subjects generally increase their ejection fraction by at least 5% from rest to exercise, while patients with coronary artery disease demonstrate either a fall or no change in ejection fraction compared to their resting values. This initial study reported 95% sensitivity and 100% specificity for detection of coronary artery disease (45), which represents a substantial improvement when compared to routine ECG-treadmill testing (sensitivity = 64%, specificity = 89% [46]). However, when a relatively unse-

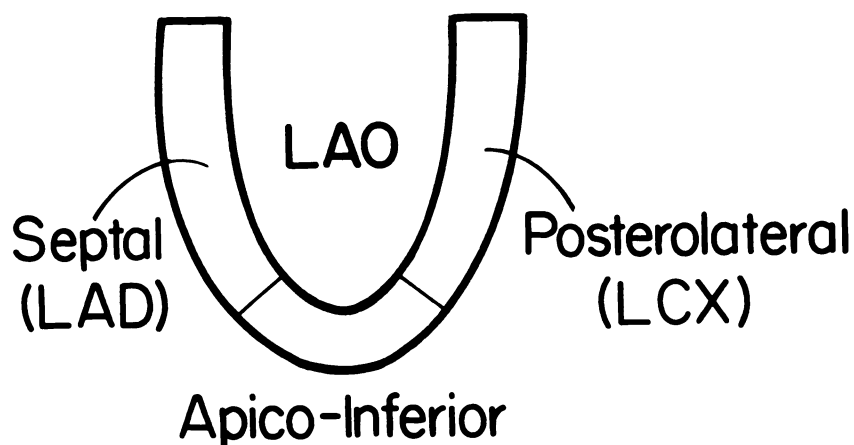


FIGURE 3

Standard myocardial segmentation scheme, "best septal" left anterior oblique projection. The postero-lateral segment is most commonly supplied by the left circumflex; however, the right coronary artery can contribute to posterolateral perfusion (depending upon the dominance of the circulation). The apicoinferior segment may receive supply from all three-coronary arteries.

lected series of patients were subsequently studied, the overall sensitivity remained high at 90%, but the specificity fell to 58% (47). The lower specificity in the unselected population most probably reflects the presence of abnormal left ventricular reserve in noncoronary heart disease such as cardiomyopathy, valvular heart disease, and hypertension (48). When evaluating the sensitivity for detecting significant coronary stenosis in individual vascular territories, the sensitivity is 80% to 96% for left anterior descending artery and substantially lower (58% to 61%) for the left circumflex artery (45,49). The sensitivity for detecting three-vessel coronary disease is excellent (95%) in contrast to 73% for single or two-vessel disease (50).

A second major problem using exercise RNA for the detection of coronary disease follows from the fact that extent of myocardium at jeopardy must be sufficient to impair regional contractile function before it can be appreciated on the exercise scan. This problem is most apparent for the detection of isolated right coronary disease, particularly when the vessel does not make a major contribution to posterolateral perfusion (i.e., co-dominant or left dominant circulation). Maddahi and co-workers reported that right ventricular ejection fraction response to exercise may be useful in this circumstance (51). However, others have cautioned that this response is more complicated, and dependent upon RV afterload as well as right coronary blood flow. Thus, detection of isolated right coronary artery disease remains problematic; sensitivity improves as the dominance of this vessel increases.

When compared to exercise radionuclide angiography, stress and redistribution thallium scintigraphy provides comparable sensitivity for CAD detection. The specificity of exercise thallium testing has been reported to be greater than that of exercise RNA (presumably reflecting the occurrence of ventricular dysfunction despite normal coronary perfusion in patients with noncoronary heart disease as noted above). Since blood-pool imaging provides insight into the functional significance of CAD not available (except by inference)

from a myocardial perfusion study, this test should, perhaps, not be viewed primarily as a means to detect CAD, but for its unique capacity to define the impact of ischemia on ventricular function. Thus it is useful to view cardiac function and perfusion studies as complementary rather than competitive in the evaluation of patients with CAD.

Chronic Stable Angina: Risk Stratification

The overall mortality rate for patients with chronic stable angina is 4% per year (52). However, this risk is not uniform: Identification of patients at high risk is imperative if one is to impact on the natural history of the disease. Humphries and associates have reported that prognosis in patients with chronic stable angina varies greatly depending on the location and extent of coronary artery disease. One-year mortality for patients with significant left main stenosis was 15–25%, compared to 10–12% for patients with three-vessel and only 1–4% for patients with single vessel coronary disease (53). Furthermore, independent of coronary anatomy, severity of left ventricular dysfunction at rest has been associated with higher annual mortality (11): in patients with chronic stable angina, those with resting left ventricular ejection fraction of less than 30% had mortality of 20–25% over an 18 to 24-mo period, compared to only 2% mortality in patients with left ventricular ejection fraction of 30% or greater (54). In the latter group, when left ventricular ejection fraction dropped by greater than 10% with exercise, the annual mortality increased to >6%. When medically treated patients from the Coronary Artery Surgery Study (CASS) registry were stratified according to resting ejection fraction, the mortality increased progressively with decreasing ejection fraction: Four-year mortality was 8% in patients with normal ejection fraction, 17% in patients with ejection fractions 35% to 49% and 43% in patients with ejection fractions of <35% (11).

In 1983, Jones and coworkers described the prognostic implications of left ventricular function during exercise (12). In their series, patients with abnormal ejec-

tion fraction response to exercise had 20% higher 3-year mortality compared to patients with a normal increase in exercise ejection fraction. Of note, resting ejection fractions were comparable between the two groups with different exercise responses. As such, differences in survival could not be explained by differences in resting ejection fraction alone.

In 1984, Pryor and associates analyzed the prognostic implications of coronary arteriographic data relative to resting ejection fraction as well as ejection fraction response to exercise (13). They confirmed prior reports that coronary anatomy is associated with clinical outcome ($p < 0.001$), when considered alone or after adjustment for resting ejection fraction. However, after adjustment for the exercise ejection fraction, the prognostic importance of coronary anatomy declined ($p < 0.05$), but remained significant. The National Heart, Lung and Blood Institute (NHLBI) reported similar results in a group of three-vessel CAD patients and preserved left ventricular function at rest, where the high risk subgroup was characterized by a decrease in ejection fraction during exercise, positive ST-segment response on ECG, and poor exercise capacity with 4-yr mortality of 29% versus 0% in all other patients with three-vessel disease (14). Thus, patients without objective evidence for ischemia have an excellent prognosis, even with three-vessel coronary artery disease and mild to moderate impairment of resting systolic function. Additional data available from the European Coronary Surgery Study, Coronary Artery Surgery Study (CASS) registry as well as Gohlke and associates, support the above findings: a high risk subgroup of patients can be identified on the basis of inducible ischemia during exercise radionuclide angiography (15-17). These studies support the concept that noninvasive assessment of exercise-induced ischemia provides additional prognostic information to the coronary anatomy in patients with CAD.

Myocardial Infarction

Myocardial infarction is the proximate cause of an estimated 550,000 deaths per year, with 55% of patients dying before reaching a hospital (55). Of the initial survivors who are subsequently admitted to a coronary care unit, nearly 10% die during their hospitalization, and an additional 10% die within 6-12 mo after hospital discharge (56). However, 1 year after an acute infarction, the mortality rate is reduced to 5% per year (52) (Figs. 4-6).

Prognosis in myocardial infarction is related to infarct size, which is reflected in the ejection fraction and extent of akinesis (57). Abnormalities in ventricular function following myocardial infarction range from extensive wall motion abnormalities with associated depressed left ventricular ejection fraction, to regional wall motion abnormalities with preserved systolic function, to absence of either wall motion abnormality or

systolic dysfunction (58,59). The location of the infarct relates to the extent of left ventricular systolic dysfunction: patients evolving anterior myocardial infarction generally have lower ejection fractions than those evolving inferior myocardial infarction.

Ejection fraction and regional wall motion abnormalities frequently change dramatically in the first 3-5 days postinfarct, tend to stabilize by Day 10, and remain relatively unchanged beyond 3 mo. The improvement may be because of either spontaneous or pharmacologic reperfusion preserving the infarct zone, or reversal of myocardial stunning (31,60-64). Thus, clinical decisions regarding interventional therapy should not be based solely upon single measures of systolic performance. This caveat reflects the vexing problem of clinical determination of myocardial viability.

In the acute peri-infarction period, Shah and coworkers reported that the outcome of patients with ejection fraction $<30\%$ was poor: all patients dying within 14 days of infarction had mean ejection fraction of 27% compared to 46% in all others who survived (65). Several reports have also indicated the importance of resting left ventricular ejection fraction after acute myocardial infarction for long-term prognosis (66-68). In 1983, the Multicenter Post-Infarction Research Group reported that 1-year mortality in patients surviving myocardial infarction increased exponentially as the resting ejection fraction decreased below 40% (67). Their data revealed a one-year mortality of 2-4% in patients with either normal or mildly reduced ejection fractions, 12% in patients with ejection fraction 20 to 39% and 47% in patients with ejection fractions $<20\%$. In addition to the prognostic importance of resting left ventricular ejection fraction, Morris and associates reported that ejection fraction assessed during exercise to be the most potent predictor of mortality after acute myocardial infarction. In their study, the 2-yr mortality increased dramatically as exercise-induced ejection fraction fell below 45% as follows: when exercise ejection fraction was $>50\%$ the mortality was $<11\%$, when exercise ejection fraction fell to 30% the mortality was 29%, and when ejection fraction dropped to 15% the associated mortality was 56% (68).

DIASTOLE

Physiology

Diastole is not a passive period, dependent solely on venous inflow and transvalvular pressure gradients to refill the ventricle. Recent studies suggest that relaxation of the myofibril is an energy requiring process, that may be altered in myocardial hypertrophy due to hypertension, hypertrophic cardiomyopathy, infiltrative/restrictive myopathies (69-76) and ischemic heart disease secondary to epicardial coronary obstruction (77-

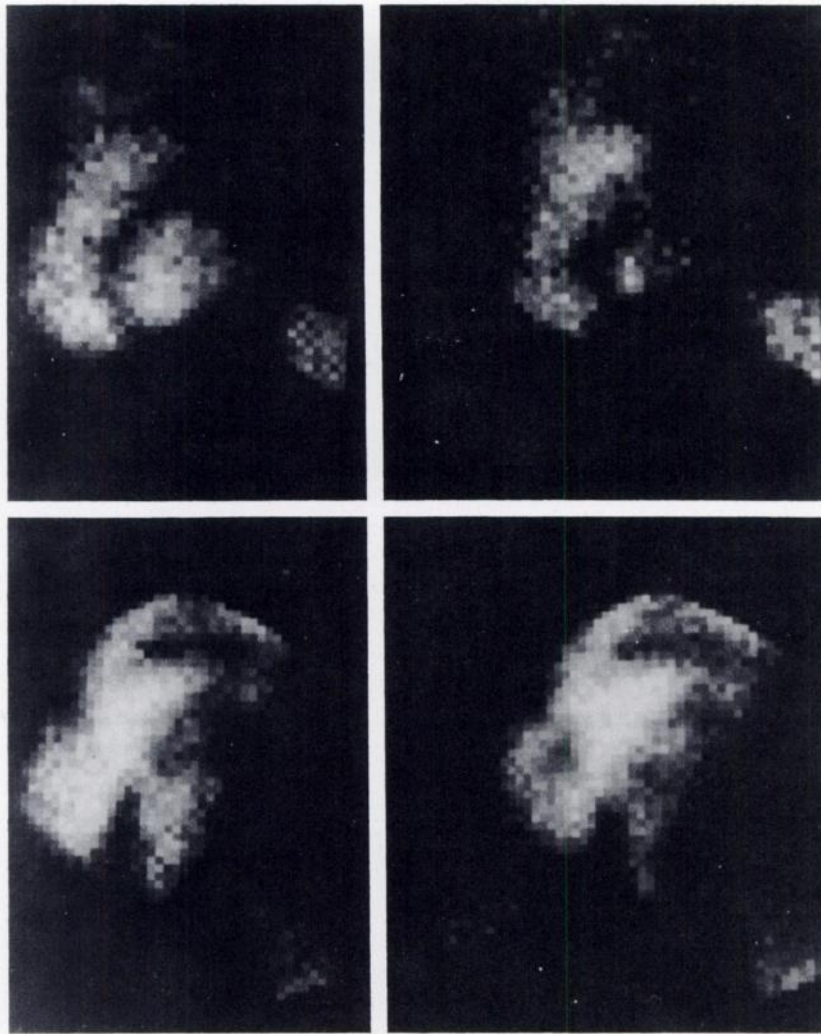


FIGURE 4
LAD distribution myocardial infarction, LAO projection. Upper panels reveal normal regional contraction (left = end-diastole, right = end-systole). Lower panels demonstrate distal septal/apical wall motion abnormalities (left = end-diastole, right = end-systole).

79). Since changes in diastolic function may antedate depression of systolic function, measurement of diastolic parameters might enhance the early detection of left ventricular dysfunction.

Classically, diastole has been viewed as a series of temporally distinct phases (80). The first phase, isovolumic relaxation, comprises the period from end-ejection to mitral valve opening. During this interval, left ventricular volume is unchanged, and left ventricular

pressure declines at an exponential rate. As left ventricular pressure falls below atrial pressure during the latter portion of isovolumetric diastole, the blood volume stored in the atrial reservoir during systole and isovolumetric relaxation now fills the ventricle: This constitutes the early rapid filling phase of diastole. The third phase of diastole, diastasis, consists of the period following the abolition of the transmitral pressure gradient and concludes with the onset of atrial systole. It should

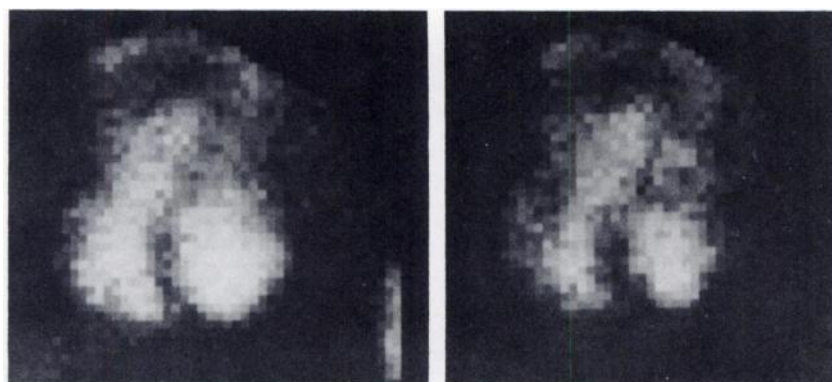


FIGURE 5
RCA distribution myocardial infarction, LAO projection: The wall motion abnormality involves the apicoinferior segment. Figures 4 and 5 illustrate the difficulty of assigning apical wall motion abnormalities to a specific coronary vascular territory. (left = end-diastole, right = end-systole).

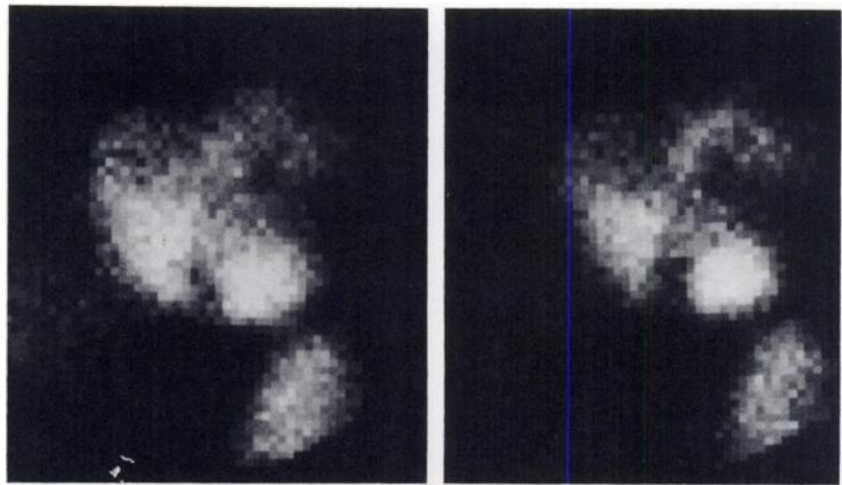


FIGURE 6
Left circumflex distribution myocardial infarction, LAO projection (left = end-diastole, right = end-systole). The wall motion abnormality involves the posterolateral segment.

be noted that although the rate of transmitral flow is reduced during diastasis, left ventricular volume increases significantly during this interval (81). The atrial contribution to left ventricular filling, which follows electromechanical atrial systole, concludes diastole.

Left ventricular pressure continues to decline during the early relaxation period, beyond the point at which rapid filling begins (82). This observation underlies the concept of diastolic suction as a contributor to early filling. As such, it cannot be assumed that the time of onset of filling as determined from the radionuclide time-activity curve corresponds to the minimum LV end-diastolic pressure.

Parameters

Left ventricular relaxation and filling can be evaluated by analysis of ventricular time-activity curves generated from high temporal resolution radionuclide angiography. There are four parameters which have been derived from the radionuclide data and applied to characterize diastolic ventricular function (Fig. 7):

1. The peak filling rate (PFR), calculated by differential analysis of the early rapid filling phase, is the most widely applied parameter of diastolic function, and is often viewed as an index of LV compliance.

2. The time to peak filling rate (TPFR), is the time from end-systole (minimum LV counts) to the time of PFR. This parameter is viewed as an index of left ventricular relaxation.

3. The average filling rate (AFR), which integrates the filling events that occur during the early, rapid filling phase.

4. The atrial contribution to LV filling, which quantifies the late increment in ventricular count activity attendant to atrial systole.

The peak filling rate (PFR) is seen as an index of "early" left ventricular filling (i.e., pre-diastasis). However, it is widely appreciated that PFR is dependent upon relaxation (loading conditions, inactivation/disengagement of the contractile elements) (83-84), ejection fraction and heart rate (85). As a result, this value is subject to major changes as a result of factors other than primary changes in the rate of left ventricular filling. An alternative descriptor of early filling is the average filling rate (AFR), which integrates filling characteristics throughout the rapid filling phase (i.e., from end-systole as defined by minimum LV counts through the end of the rapid filling period). However, this parameter is also dependent upon LV relaxation, cardiac cycle length and integrity of systolic function.

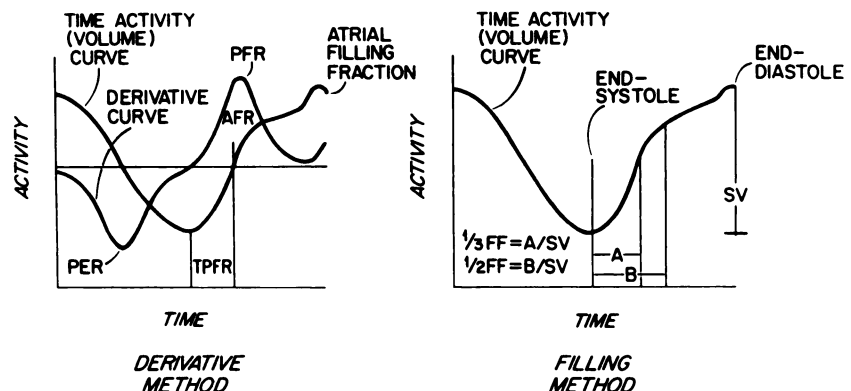


FIGURE 7
Left ventricular diastolic filling parameters, derivative versus filling fraction method. PER = peak ejection rate; PFR = peak filling rate; AFR = average filling rate; TPFR = time to PFR; FF = filling fraction; SV = stroke volume. (modified from Bashore TM, Shaffer P. Diastolic function. In: Gerson MC. *Cardiac nuclear medicine*. New York: McGraw-Hill, 1987.)

As an alternative to absolute filling rates, the temporal pattern and extent of filling has been proposed to describe diastolic events. Rather than derive the rate of change of LV activity, these approaches essentially quantify the change in left ventricular counts which occur during specified time intervals as a percentage of stroke counts. For example, Wickemeyer and colleagues (86) advocated the first third filling fraction as an index of early filling. Similarly, atrial filling fraction has been described as an index of late diastolic filling by Bonow et al. (87) and essentially serves as a negative correlate of early left ventricular filling events. An additional extension of "temporal" analysis of LV filling is reflected by the measurement of the time to PFR (TPFR), defined as the time from end-systole (minimum LV counts) to the time of occurrence of the PFR; the measurement has typically been advocated as an index of the rate of left ventricular relaxation, analogous to the isovolumic relaxation time. This TPFR analysis is difficult to implement given the difficulty determining the precise end of systole, as well as the obvious influence of early filling upon this parameter. These problems have been reflected in the poor correlation between TPFR and invasively defined hemodynamic descriptors of diastole, as contrasted with the good correlation between PFR and maximum negative dP/dt and the time constant of LV relaxation (88, 89).

Diastolic Dysfunction in Coronary Artery Disease

Abnormalities of left ventricular relaxation and filling have been observed at cardiac catheterization in patients with coronary artery disease, both in the presence and absence of active myocardial ischemia (77-79, 89, 90). Similar observations were made by Bonow and colleagues utilizing blood-pool images recorded with a high temporal resolution list-mode technique.

These investigators reported subnormal left ventricular filling (PFR < 2.5 EDV/sec, TPFR > 180 msec) in 91% of a series of 231 CAD patients (91). This finding was prevalent in patients without prior Q-wave infarction (85%) and in patients with normal resting LV systolic function (82%). The abnormalities in filling improved following medical (92) and mechanical (93) CAD treatment (Fig. 8). These latter findings have important implications regarding the mechanism underlying impaired diastolic filling in such subjects, with "reversibility" implying a dynamic etiology. Yamagishi and co-workers have reported that global diastolic "dysfunction" may reflect asynchronous regional filling (94); Bonow has reported that such "asynchronous" filling in patients with single vessel CAD is reversible following successful PTCA (95).

Reduto and colleagues (96) studied PFR and first-third filling fraction in 68 CAD patients. At rest, PFR and "1/3 F.F." were reduced in CAD subjects when compared to controls, with a greater reduction in patients with abnormal LV ejection fraction at rest. With exercise, the expected increment in left ventricular filling rates was blunted in the CAD group, most pronounced in the group with subnormal LVEF. Comparison of the change in 1/3 FF from rest to exercise identified a fall in the CAD cohort with normal systolic function, while it remained normal in the control subjects. Poliner et al. (97) extended the application of diastolic parameters by examining the utility of filling rates for the diagnosis of coronary artery disease. These investigators demonstrated that the ratio of exercise to rest PFR was a powerful discriminant between normals and CAD patients (sensitivity = 98%; specificity = 94%).

It should be emphasized that the blunted heart rate and exercise ejection fraction in the CAD cohort may

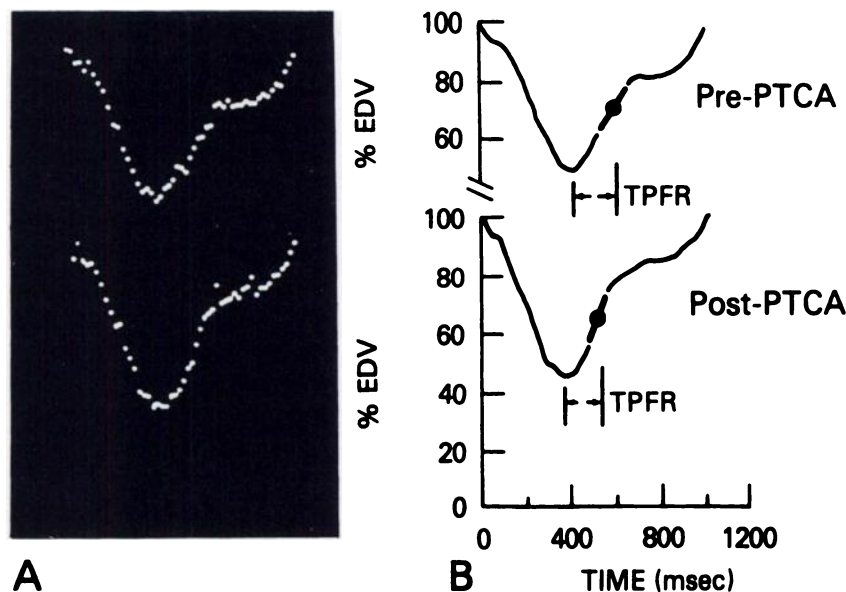


FIGURE 8
Left ventricular time-activity curves (with schematic diagrams) in a patient before and after PTCA. Note the increase in LV peak filling rate after PTCA [Reproduced with permission from Bonow et al., Ref (93)]

contribute to the differential PFR response. This finding in CAD patients is consistent with data previously reported by Okada and colleagues which demonstrated an increment in pulmonary blood volume (and by inference, decreased left ventricular filling) during supine exercise in patients with coronary disease involving the left coronary artery (98). Subsequent work by this group established that exercise related changes in pulmonary blood volume correlated with directional changes in left ventricular filling pressures, thus suggesting that abnormalities of left ventricular filling during exercise do reflect hemodynamically significant events in CAD patients (99).

Thus, abnormalities of left ventricular relaxation/filling are demonstrable in CAD patients. Further, these abnormalities occur in the absence of active ischemia, prior infarction or left ventricular systolic dysfunction and do not correlate with the severity or extent of the underlying coronary disease. Given the well-recognized effect of ischemia upon intracellular calcium flux and de-activation of the contractile apparatus, it is likely that the abnormalities described above may reflect the primacy of relaxation abnormalities in CAD patients.

Additional factors to consider when examining LV filling rates in patients with CAD include: (a) normal age related decline in PFR (presumed to reflect decreased myocardial compliance with age); (b) impact of intercurrent disease processes upon PFR, particularly systemic arterial hypertension (74,75); (c) the effects of anti-ischemic therapy upon PFR and its inotropic, chronotropic and load determinants; (d) approaches to "normalization" of filling rates. Since PFR is typically normalized to end-diastolic counts, normalization is of particular importance when left ventricular volumes differ among subjects or change to a significant degree during the course of serial determinations (100).

As noted, "diastolic dysfunction" has been reported in a variety of noncoronary disease states (69-76, 101-112). The common pathologic substrate in each of these conditions is left ventricular hypertrophy. A number of investigators have suggested that "coronary insufficiency" (relative to LV mass) is the proximate cause of abnormal left ventricular relaxation and filling in such cases, thereby providing a unifying mechanism for the occurrence of such dysfunction.

FUTURE DIRECTIONS

Blood-Pool Tomography

Tomographic gated blood-pool imaging is a natural extension of planar gated blood-pool scanning and rotating Anger camera SPECT technology. When these tomograms are recorded with a large field-of-view gamma camera, a sufficient volume is sampled to permit reconstruction of the data in multiple planes. The true three-dimensional nature of this process allows the evaluation of regional wall motion of all the cardiac

chambers, unencumbered by overlapping structures. Recording data from gated blood-pool scans with SPECT offers an opportunity to reconstruct the data in orientations that cannot be recorded with conventional planar images: (a) an apical four chamber view can be obtained to provide simultaneous information about atrial and ventricular wall motion; (b) a true LV long axis view can be reconstructed to provide information about LV wall motion without overlying RV activity; (c) the short axis of the ventricle can be sampled at multiple points, to permit independent assessment of motion at the base and apex of the left ventricle. Thus, precise evaluation of cardiac function is possible in patients with coronary artery and noncoronary heart disease. In addition to evaluation of regional wall motion, precise determination of ventricular volumes and ejection fractions are possible. Early clinical experience has demonstrated the superiority of tomographic gated blood-pool imaging over planar blood-pool imaging (and conventional contrast ventriculography) for precise definition of subtle functional abnormalities (113, 114). Gated SPECT can be particularly useful in patients with apical aneurysms and left ventricular failure, to determine if retained function at the base is sufficient to warrant surgery (113-116). Unfortunately, the enormous amount of data generated by this procedure taxes the capacity of most nuclear medicine computer systems, requiring up to 3 hr for reconstruction of a single study. However, the availability of 32-bit processors and large amounts of image memory in new machines should ultimately reduce this processing time to clinically suitable duration.

In addition to single photon imaging, gated blood-pool tomography can also be performed with positron emitting tracers and data can be recorded with gated positron tomographs (117). Previously, ^{11}C CO has been employed for this purpose (118). The use of positron techniques has several advantages over single photon methods: (a) improved image resolution, (b) absolute quantitation of cardiac and pulmonary volumes, (c) facility for sequential imaging pre- and postintervention, and (d) lower radiation burden to the patient.

Nonimaging Nuclear Probe

The dynamic range of changes in ventricular function as patients perform activities of daily living can be measured continuously with an ambulatory ventricular function monitor. This information can be used to assess the impact of altered ventricular function on an individual's life style, and may be useful to optimize medical therapy. The instrument consists of two small radionuclide detectors, an ECG recorder and associated electronics placed in a garment which is worn like a vest (hence, the name of the device VEST). The VEST records beat-to-beat left ventricular time activity curves over several hours. Preliminary studies have demonstrated changes in left ventricular ejection fraction dur-

TABLE 2
Clinical Indications for Radionuclide Ventricular Function Studies

Situation	Rationale	Comments
Detection of CAD	Functional impact of ischemia	Thallium preferred Need sufficient ischemia to impair function
Stable angina	Risk stratification Functional impact of CAD	Rest/ex. RVG Selection of Rx
Dyspnea	Differentiate cardiac and pulmonary etiology	Rest/ex. RVG
Acute infarction	Evaluate for beta blockade assess viability	Rest RVG
Left heart failure	Differentiate diastolic from systolic dysfunction	Rest RVG

ing nonstressful daily activities (119) and rapid sequential changes in ejection fraction during treadmill exercise in normal subjects (120). When ventricular function was monitored in patients with coronary artery disease, transient decreases in ejection fraction with or without ECG changes were frequently observed normal during daily activity (121). The VEST may also supply prognostic information. Kayden et al. (122) monitored patients within 10 days of thrombolytic therapy. They observed 11 patients with a transient decrease in ejection fraction during a 3-hr interval of monitoring. During a 42-wk follow-up, six of these patients had coronary events, while only 1/16 patients without a decrease in EF had an event.

CONCLUSION

Catheter based procedures designed to treat patients with coronary artery disease have stimulated the development of a wide variety of technologies to characterize ventricular performance. Radionuclide evaluation of LV systolic function can be used to detect CAD by demonstrating the impact of exercise induced ischemia upon global and/or regional ventricular function. In addition radionuclide ventriculography can provide important prognostic information in CAD patients by defining the extent/severity of underlying disease and by quantifying the degree of functional impairment in patients with prior infarction.

For routine clinical purposes, the rest radionuclide study should be acquired in multiple projections with qualitative assessment of regional wall motion; minimum of 16 frames per cardiac cycle with an information density of 300,000 cts/frame should be acquired. Standardized programs can be applied quantify left ventricular volumes and ejection fraction. Quantitation of regional function mandates greater spatial and temporal (32 frames per cycle) resolution; this latter requirement also applies to data acquired during exercise, and is fundamental to the accurate quantitation of left ventricular filling rates for the characterization of diastolic function. Although such filling rates have provided

important mechanistic insight into the pathophysiology of a variety of disease states, their utility as a diagnostic tool is not as yet defined. Similarly, since most clinical decisions regarding ventricular function in CAD patients are based upon assessment of wall motion, other volume derived measurements (e.g., regional EF and phase analysis) are presently most applicable in clinical research settings.

Given these technical difficulties and the limitations inherent in "single projection" data acquisition to define regional ventricular function, it is our contention that stress/redistribution thallium-201 scintigraphy is the study of choice for CAD detection. Alternatively, exercise radionuclide ventriculography is preferred for the definition of the functional impact of, and prognosis associated with, coronary disease (Table 2). Further, the combined application of myocardial perfusion and function studies represents a broadly available means for evaluation of myocardial viability, a major issue in the thrombolytic/interventional era. The recent description of blood-pool tomography and the development of ambulatory ventricular function monitors continues to expand the repertoire of radionuclide techniques suitable for the characterization of left ventricular function.

REFERENCES

1. Guyton AC. Contraction of skeletal muscle. Chap. 11. 135. In: Textbook of medical physiology. Seventh Edition. Philadelphia: W. B. Saunders Co. 1986:120-135.
2. Monroe RG, French GN. Left ventricular pressure-volume relationships and myocardial oxygen consumption in the isolated heart. *Circ Res* 1961; 9:362-374.
3. Stone D, Dymond D, Elliott AT, et al. Exercise first-pass radionuclide ventriculography in detection of coronary artery disease. *Br Heart J* 1980; 44:208-214.
4. Caldwell JH, Hamilton GW, Sorensen SG, et al. The detection of coronary artery disease with radionuclide techniques: a comparison of rest-exercise thallium imaging and ejection fraction response. *Circulation* 1980; 61:610-619.

5. Kirshenbaum HD, Okada RD, Boucher CA, et al. Relationship of thallium-201 myocardial perfusion pattern to regional and global left ventricular function with exercise. *Am Heart J* 1981; 101:734-739.
6. Jones RH, McEwan P, Newman GE, et al. Accuracy of diagnosis of coronary artery disease by radionuclide measurement of left ventricular function during rest and exercise. *Circulation* 1981; 64:586-601.
7. Burggraf GW, Parker JO. Prognosis in coronary artery disease: Angiographic, hemodynamic, and clinical factors. *Circulation* 1975; 51:146-156.
8. Proudfit WL, Bruschke AVG, Sones FM Jr. Natural history of obstructive coronary artery disease: ten-year study of 601 nonsurgical cases. *Prog Cardiovasc Dis* 1978; 21:53-78.
9. Harris PJ, Harrell FE Jr, Lee KL, Behar VS, Rosati RA. Survival in medically treated coronary artery disease. *Circulation* 1979; 60:1259-1269.
10. Hammermeister KE, DeRouen TA, Dodge HT. Comparison of survival of medically and surgically treated coronary disease patients in Seattle Heart Watch: a non-randomized study. *Circulation* 1982; 65:53-59.
11. Mock MB, Ringqvist I, Fisher LD, et al. Survival of medically treated patients in the Coronary Artery Surgery Study (Cass) registry. *Circulation* 1982; 66:562-568.
12. Jones RH, Floyd RD, Austin EH, Sabiston DC Jr. The role of radionuclide angiocardiology in the preoperative prediction of pain relief and prolonged survival following coronary artery bypass grafting. *Ann Surg* 1983; 197:743-753.
13. Pryor DB, Harrell FE Jr, Lee KL, et al. Prognostic indicators from radionuclide angiography in medically treated patients with coronary artery disease. *Am J Cardiol* 1984; 53:18-22.
14. Bonow RO, Kent KM, Rosing DR, et al. Exercise-induced ischemia in mildly symptomatic patients with coronary artery disease and preserved left ventricular function: identification of subgroups at risk of death during medical therapy. *N Eng J Med* 1984; 311:1339-1345.
15. European Coronary Surgery Study Group: Long-term results of prospective randomized study of coronary artery bypass surgery in stable angina pectoris. *Lancet* 1982; 2:1173-1180.
16. Weiner DA, Ryan TJ, McCabe CH, et al. Value of exercise testing in determining the risk classification and the response to coronary artery bypass grafting in three-vessel coronary artery disease: a disease from the Coronary Artery Surgery Study (CASS) registry. *Am J Cardiol* 1987; 60:262-266.
17. Gohlke H, Samek L, Betz P, et al. Exercise testing provides additional prognostic information in angiographically defined subgroups of patients with coronary artery disease. *Circulation* 1983; 68:979-985.
18. Davies RA, Laks H, Wackers FJ, et al. Radionuclide assessment of global left ventricular function in patients requiring intraoperative balloon pump assistance. *Ann Thorac Surg* 1982; 33:123-131.
19. Shah PK, Berman DS, Pichler M, et al. Improved global and regional ventricular performance with nitroprusside in acute myocardial infarction [Abstract]. *J Nucl Med* 1979; 20:P640.
20. Ramanathan K, Bodenheimer MM, Banka VS, et al. Natural history of contractile abnormalities after acute myocardial infarction in man: severity and response to nitroglycerin as a function of time. *Circulation* 1981; 63:731-739.
21. Anderson JL, Marshall HW, Bray BE, et al. A randomized trial of intracoronary streptokinase in the treatment of acute myocardial infarction. *N Engl J Med* 1983; 308:1312-1318.
22. Khaja F, Walton JA, Brymer JF, et al. Intracoronary fibrinolytic therapy in acute myocardial infarction: report of a prospective randomized trial. *N Engl J Med* 1983; 308:1305-1311.
23. Bonow RO, Vitale DR, Bacharach SL, et al. Asynchronous left ventricular regional function and impaired global diastolic filling in patients with coronary artery disease: reversal after coronary angioplasty. *Circulation* 1985; 71:297-307.
24. Liu P, Kiess MC, Strauss HW, et al. Comparison of ejection fraction and pulmonary blood volume ratio as markers of left ventricular function change after coronary angioplasty. *J Am Coll Cardiol* 1986; 8:511-516.
25. Oldendorf WH. Cerebral blood flow measurements. In: Croll MM, Brady LW, eds. Recent advances in nuclear medicine. New York: Appleton Century Crofts, 1966: 44-70.
26. Strauss HW, Pitt B, Rouleau, Bailey I, Wagner HN. Atlas of cardiovascular nuclear medicine—selected case studies. St. Louis, CV Mosby Co., 1977: 34.
27. Berman DS, Maddahi J, Garcia EV, et al. Assessment of left and right ventricular function with multiple gated equilibrium cardiac blood pool scintigraphy. *Clin Nucl Cardiol* 1981; York: Grune and Stratton, 224-284.
28. Makler PT, Denenberg BS, Bove AA, et al. Validation of the details of the radionuclide left ventricular time-activity curve. *J Nucl Med* 1981; 22:9(A).
29. Strauss HW, Zaret BL, Hurley PJ, et al. A Scintigraphic method for measuring left ventricular ejection fraction in man without cardiac catheterization. *Am J Cardiol* 1971; 28:575-580.
30. Massie BM, Kramer BL, Gertz EW, Henderson SG. Radionuclide measurements of left ventricular volume: comparison of geometric and count based methods. *Circulation* 1982; 65:725-730.
31. Yasuda T, Alpert N, Gold HK, et al. Quantitative regional wall motion analysis of multigated blood pool scans: validation. *Circulation* 1981; 64:250(A).
32. Maddox DE, Wynne J, Uren R, et al. Regional ejection fraction: a quantitative radionuclide index of regional left ventricular performance. *Circulation* 1979; 59:1001-1009.
33. Vitale DF, Green MV, Bacharach SL, et al. Assessment of regional left ventricular function by sector analysis: a method for objective evaluation of radionuclide blood pool studies. *Am J Cardiol* 1983; 52:1112-1119.
34. Burow RD, Wilson MF, Allen EW, et al. Regional left ventricular time-activity curves from multiple gated equilibrium scintigraphy: correlation with contrast angiography. *J Nucl Med* 1981; 22:61(A).
35. Dilsizian V, Bonow RO, Cannon RO, et al. The effect of coronary artery bypass grafting on left ventricular systolic function at rest: evidence for preoperative subclinical myocardial ischemia. *Am J Cardiol* 1988; 61:1248-1254.
36. Green MV, Bacharach SL. Functional imaging of the heart: methods; limitations, and examples from gated blood pool scintigraphy. *Prog Cardiovasc Dis* 1986;

- 28: 319-348.
37. Holman BL, Wynne J, Idoine J, Zielonka J, Neill J. The paradox image: a noninvasive index of regional ventricular dyskinesia. *J Nucl Med* 1979; 20:1237-1242.
 38. Adam WE, Tarkowska A, Bitter F, et al. Equilibrium (gated) radionuclide ventriculography. *Cardiovasc Radiol* 1979; 2:161-173.
 39. Links MJ, Douglass HK, Wagner NH Jr. Pattern of ventricular emptying by Fourier analysis of gated blood-pool studies. *J Nucl Med* 1980; 21:978-982.
 40. Braunwald E, Rutherford JD. Reversible ischemic left ventricular dysfunction: evidence for the "hibernating myocardium". *J Am Coll Cardiol* 1986; 8:1467-1470.
 41. Tchervenkov CI, Symes JF, Sniderman AD, et al. Improvement in resting ventricular performance following coronary bypass surgery. *Ann Thorac Surg* 1985; 39:340-345.
 42. Rozanski A, Berman D, Gray R, et al. Preoperative prediction of reversible myocardial asynergy by post-exercise radionuclide ventriculography. *N Engl J Med* 1982; 307:212-216.
 43. Scheuer J, Brachfeld N. Coronary insufficiency: relations between hemodynamic, electrical and biochemical parameters. *Circ Res* 1966; 18:178-189.
 44. Upton MT, Newman GER, Port S, et al. Left ventricular function during two levels of exercise in patients with coronary artery disease. *Am J Cardiol* 1979; 43:433A.
 45. Borer JS, Kent KM, Bacharach SL, et al. Sensitivity, specificity and predictive accuracy of radionuclide cineangiography during exercise in patients with coronary artery disease. *Circulation* 1979; 60:572-580.
 46. Gibson RS, Beller GA. Should exercise electrocardiographic testing be replaced by radioisotope methods? In: Rahimtoola SH, ed. Controversies in coronary artery disease. Philadelphia: F. A. Davis Co., 1983: 1-31.
 47. Jones RH, McEwan P, Newman GE, et al. Accuracy of diagnosis of coronary artery disease by radionuclide measurement of left ventricular function during rest and exercise. *Circulation* 1981; 64:586-601.
 48. Rozanski A, Diamond GA, Berman D, et al. Declining specificity of exercise radionuclide ventriculography. *N Engl J Med* 1983; 309:518-522.
 49. Elkayam U, Weinstein M, Berman D, et al. Stress thallium-201 myocardial scintigraphy and exercise technetium ventriculography in the detection and location of chronic coronary artery disease: Comparison of sensitivity and specificity of these noninvasive tests alone and in combination. *Am Heart J* 1981; 101:657-666.
 50. Stone D, Dymond D, Elliot AT, et al. Exercise first-pass radionuclide ventriculography in detection of coronary artery disease. *Br Heart J* 1980; 44:208-214.
 51. Maddahi J, Berman DS, Matsuoka DT, et al. Right ventricular ejection fraction during exercise in normal subjects and in coronary artery disease patients: assessment by multiple-gated equilibrium scintigraphy. *Circulation* 1980; 62:133-140.
 52. Kannel WB, Feinleib M. Natural history of angina pectoris in the Framingham study: progress and survival. *Am J Cardiol* 1972; 29:154-163.
 53. Humphries JO. Expected course of patients with coronary artery disease. In: Rahimtoola SH, ed. Coronary bypass surgery, Cardiovascular clinics. Vol 8. Philadelphia: FA Davis Co, 1977: 41-54.
 54. Wallis J, Borer JS, Moses JW, et al: Radionuclide cineangiography during exercise: prognostic importance in coronary artery disease. *J Am Coll Cardiol* 1983; 1:733A.
 55. American Heart Association: Heart Facts 1988. Dallas American Heart Association, 1988.
 56. Gilpin EA, Koziol JA, Madsen ED, et al. Periods of differing mortality distribution during the first year after acute myocardial infarction. *Am J Cardiol* 1983; 52:240-244.
 57. Morrison J, Coromilas J, Munsey D, et al. Correlation of radionuclide estimates of myocardial infarction size and release of creatine kinase MB in man. *Circulation* 1980; 62:277.
 58. Rigo P, Murray M, Strauss HW, et al. Left ventricular function in acute myocardial infarction evaluated by gated scintiphotography. *Circulation* 1974; 50:678-684.
 59. Sanford CF, Corbett J, Nicod P, et al. Value of radionuclide ventriculography in the immediate characterization of patients with acute myocardial infarction. *Am J Cardiol* 1982; 49:637-644.
 60. Laffel GL, Braunwald E. Thrombolytic therapy. A new strategy for treatment of acute myocardial infarction. *N Engl J Med* 1984; 311:710-717; 770-776.
 61. Serruys PW, Simoons ML, Suryapranata H, et al. Preservation of global and regional left ventricular function after early thrombolysis in acute myocardial infarction. *J Am Coll Cardiol* 1986; 7:729-742.
 62. Sheehan FH, Braunwald E, Canner P, et al. The effect of intravenous thrombolytic therapy on left ventricular function: a report on tissue-type plasminogen activator and streptokinase from the thrombolysis in myocardial infarction (TIMI Phase I) trial. *Circulation* 1987; 75:817-829.
 63. The I.S.A.M. Study Group: A prospective trial of intravenous streptokinase in acute myocardial infarction. Mortality, morbidity, and infarct size at 21 days. *N Engl J Med* 1986; 314:1465.
 64. Ong L, Reiser P, Coromilas J, et al. Left ventricular function and rapid release of creatine kinase MB in acute myocardial infarction: evidence for spontaneous reperfusion. *N Engl J Med* 1983; 309:1-6.
 65. Shah PK, Pichler M, Berman DS, et al. Left ventricular ejection fraction determined by radionuclide ventriculography in early stages of first transmural myocardial infarction: Relation to short-term prognosis. *Am J Cardiol* 1980; 45:542-546.
 66. Borer JS, Rosing DR, Miller RH, et al. Natural history of left ventricular function during 1 year after acute myocardial infarction: Comparison with clinical, electrocardiographic and biochemical determinations. *Am J Cardiol* 1980; 46:1.
 67. Multicenter Postinfarction Research Group: Risk stratification and survival after myocardial infarction. *N Engl J Med* 1983; 309:331-336.
 68. Morris KG, Palmeri ST, Califf RM, et al. Value of radionuclide angiography for predicting specific cardiac events after acute myocardial infarction. *Am J Cardiol* 1985; 55:318-324.
 69. Paulus WJ, Brutsaert DL. Relaxation abnormalities in cardiac hypertrophy. *Eur Heart J* 1982; 3A:133-137.
 70. Hirota Y. A clinical study of left ventricular relaxa-

- tion. *Circulation* 1980; 62:756-763.
71. Fouad FM, Slominski JM, Tarazi RC. Left diastolic function in hypertension: relation to left ventricular mass and systolic function. *J Am Coll Cardiol* 1984; 6:1500-1506.
 72. Fouad FM, Tarazi RC, Gallagher JH, et al. Abnormal left ventricular relaxation in hypertensive subjects. *Clin Sci* 1980; 59:4115-4145.
 73. Tyberg TI, Goodyer AVN, Hurst JW, et al. Left ventricular filling in differentiating restrictive amyloid cardiomyopathy and constrictive pericarditis. *Am J Cardiol* 1981; 47:791-796.
 74. Stewart S, Mason DT and Braunwald E. Impaired rate left ventricular filling in idiopathic hypertrophic subaortic stenosis and valvular aortic stenosis. *Circulation* 1968; 37:8-14.
 75. Sanderson JE, Traill TA, St. John Sutton MG, et al. Left ventricular relaxation and filling in hypertrophic cardiomyopathy. *Br Heart J* 1978; 40:596-601.
 76. Hanrath P, Mathey DG, Siegert R, Bleifeld W. Left ventricular relaxation and filling in different forms of left ventricular hypertrophy: an echocardiographic study. *Am J Cardiol* 1980; 45:15-23.
 77. Papapietro SE, Coghlan HC, Zisserman D, et al. Impaired rate of left ventricular relaxation in patients with coronary artery disease and left ventricular dysfunction. *Circulation* 1979; 59:984-991.
 78. Bristow JD, Van Zee BE, Judkins MP. Systolic and diastolic abnormalities of the left ventricle in coronary artery disease. *Circulation* 1970; 42:219-228.
 79. Barry WH, Broomer JE, Alderman EL, Harrison DC. Changes in diastolic stiffness and tone of the left ventricle during angina pectoris. *Circulation* 1974; 49:255-263.
 80. Wiggers CJ, Katz LN. The contour of the ventricular volume curve under different conditions. *Am J Physiol* 1922; 58:439-475.
 81. Rankin JS, Arentzen CE, Ring WS, et al. The diastolic mechanical properties of the intact left ventricle. *Fed Proc* 1980; 39:141-147.
 82. Hori M, Yellin EL, Sonnenblick EH. Left ventricular diastolic suction as a mechanism of ventricular filling. *Circulation* 1982; 42:124-129.
 83. Le Carpentier Y, Martin JL, Gastineau P, Hyatt PY. Load dependence of mammalian heart relaxation during cardiac hypertrophy and heart failure. *Am J Physiol* 1982; 242:H 855-861.
 83. Bacharach SL, Green MR, Borer JS, et al. Left ventricular peak ejection rate, filling rate and ejection fraction: concise communication. *J Nucl Med* 1979; 20:189-193.
 84. Brutsaert DL, Housmans PR, Goethals MA. Dual control of relaxation: its role in the ventricular function in the mammalian heart. *Circ Res* 1980; 47:637-652.
 85. Bianco JA, Filiberti AW, Baker SP, et al. Ejection fraction and heart rate correlate with diastolic peak filling rate at rest and during exercise. *Chest* 1985; 88:107-113.
 86. Wichemeyer W, Waggoner A, Del Ventura L, et al. Assessment of left ventricular diastolic performance by first pass radionuclide angiography: comparison with M-mode echocardiography and relation to systolic performance. *Clin Res* 1980; 28:22A.
 87. Bonow RO, Frederick TM, Bacharach SL, et al. Atrial systolic and left ventricular filling in hypertrophic cardiomyopathy: effect of Verapamil. *Am J Cardiol* 1983; 51:1386-1391.
 88. Magorien DJ, Shaffer P, Bush CA, et al. Assessment of left ventricular pressure-volume relations using gated radionuclide angiography, echocardiography and micromanometer pressure recordings. *Circulation* 1983; 67:844-853.
 89. Magorien DJ, Shaffer P, Bush C, et al. Hemodynamic correlates for timing intervals, ejection rate and filling rate derived from the radionuclide angiographic volume curve. *Am J Cardiol* 1984; 54:567-571.
 90. Hammereister KE, Warbasse JR. The rate of change of left ventricular volume in man: II. Diastolic events in health and disease. *Circulation* 1974; 49:739-747.
 91. Bonow RO, Bacharach SL, Green MV, et al. Impaired left ventricular diastolic filling in patients with coronary artery disease: assessment with radionuclide angiography. *Circulation* 1981; 64:315-323.
 92. Bonow RO, Leon MB, Rosing DR, et al. Effects of Verapamil and Propranolol on left ventricular systolic function and diastolic filling in patients with coronary artery disease: radionuclide angiographic studies at rest and during exercise. *Circulation* 1981; 65:1337-1350.
 93. Bonow RO, Heng HM, Rosing DR, et al. Improved left ventricular diastolic filling in patients with coronary artery disease after percutaneous transluminal coronary angioplasty. *Circulation* 1982; 66:1159-1167.
 94. Yamagishi T, Ozaki M, Kumada, et al. Asynchronous left ventricular diastolic filling in patients with isolated disease of the left anterior descending coronary artery. *Circulation* 1984; 69:933-942.
 95. Bonow RO, Vitale DF, Bacharach SL, et al. Asynchronous left ventricular regional function and impaired global diastolic filling in patients with coronary artery disease: reversal after coronary angioplasty. *Circulation* 1985; 71:297-307.
 96. Reduto LA, Wichemeyer WJ, Young JB, et al. Left ventricular diastolic performance in patients with coronary artery disease: assessment with first pass radionuclide angiography. *Circulation* 1981; 63:1228-1237.
 97. Poliner LR, Farber SH, Glaeser DH, et al. Alteration of diastolic filling rate during exercise radionuclide angiography: A highly sensitive technique for detection of coronary artery disease. *Circulation* 1984; 70:942-950.
 98. Okada RD, Pohost GM, Kirshenbaum HD, et al. Radionuclide determined change in pulmonary blood volume with exercise. *N Eng J Med* 1979; 301:569-576.
 99. Okada RD, Osbakken MO, Boucher CA, et al. Pulmonary blood volume ratio response to exercise: a non-invasive determination of exercise-induced changes in pulmonary capillary wedge pressure. *Circulation* 1982; 65:126-133.
 100. Rocco TP, Dilsizian V, Aroney C, et al. Therapeutic implications of the end-diastolic volume response in hypertension. *Clin Res* 1988; 36:432A.
 101. Lorrell BH, Paulus WJ, Grossman W, et al. Modification of abnormal left ventricular diastolic properties by nifedipine in patients with hypertrophic cardiomyopathy. *Circulation* 1982; 65:499-507.
 102. Alvares RF, Shaver JA, Gamble WH, et al. Isovolumic relaxation period in hypertrophic cardiomyopathy. *J Am Coll Cardiol* 1984; 3:71-81.
 103. Bonow RO, Rosing DR, Bacharach SL, et al. Effects

- of Verapamil on left ventricular systolic function and diastolic filling in patients with hypertrophic cardiomyopathy. *Circulation* 1981; 64:787-796.
104. Betocchi S, Bonow RO, Bacharach SL, et al. Isovolumic relaxation period in hypertrophic cardiomyopathy: assessment by radionuclide angiography. *J Am Coll Cardiol* 1986; 7:74-81.
 105. Bonow RO, Vitale DF, Bacharach SL, et al. Left ventricular regional asynchrony and impaired global ventricular filling in hypertrophic cardiomyopathy: Effect of Verapamil. *J Am Coll Cardiol* 1987; 9:1108-1116.
 106. Rosing DR, Condit JR, Maron BJ, et al. Verapamil therapy: a new approach the pharmacologic treatment of hypertrophic cardiomyopathy. III. Effects of long term administration. *Am J Cardiol* 1981; 48:545-553.
 107. Bonow RO, Dilsizian V, Rosing DR, et al. Verapamil induced improvement in left ventricular filling and increased exercise tolerance in patients with hypertrophic cardiomyopathy. *Circulation* 1985; 72:853-864.
 108. Inouye I, Massie B, Loge D, et al. Abnormal left ventricular filling: an early finding in mild to moderate systemic hypertension. *Am J Cardiol* 1984; 53:120-126.
 109. Smith VE, Schulman P, Karimedдини MA, et al. rapid left ventricular filling in left ventricular hypertrophy: II. Pathologic hypertrophy. *J Am Coll Cardiol* 1985; 5:869-874.
 110. Topol EJ, Traill TA, Fortuin NJ. Hypertensive hypertrophic cardiomyopathy of the elderly. *N Engl J Med* 1985; 312:277-283.
 111. Sax FL, Brush JE, Cannon RO, et al. Impaired left ventricular diastolic filling in symptomatic compared to asymptomatic hypertensive patients [Abstract]. *J Am Coll Cardiol* 1988; 11:81A.
 112. Rocco TP, Dilsizian V, Aroney C, et al. Abnormal left ventricular volume response predicts impaired exercise performance in hypertension [Abstract]. *J Am Coll Cardiol* 1988; 11:198A.
 113. Corbett JR, Jansen DE, Lewis SE, et al. Tomographic gated blood pool radionuclide ventriculography: analysis of wall motion and left ventricular volumes in patients with coronary artery disease. *J Am Coll Cardiol* 1985; 6:349-358.
 114. Gill JB, Moore RH, Tamaki N, et al. Multigated blood-pool tomography: new method for the assessment of left ventricular function. *J Nucl Med* 1986; 27:1916-1924.
 115. Maublant J, Baily P, Mestas D, et al. Feasibility of gated single-photon emission transaxial tomography of the cardiac blood pool. *Radiology* 1983; 146:837-839.
 116. Tamaki N, Mukai T, Ishii Y, et al. Multiaxial tomography of heart chambers by gated blood-pool computed tomography using a rotating gamma camera. *Radiology* 1983; 146:547-554.
 117. Schelbert HR, Schwaiger M: PET studies of the heart. In: Phelps E, Mazziotta JC, Schelbert HR, eds. *Positron emission tomography and autoradiography: principles and applications for the brain and heart*. Chap. 12. New York: Raven Press, 1986: 581-661.
 118. Nichols AB, Strauss HW, Moore RH, et al. Acute changes in cardiopulmonary blood volume during upright exercise stress testing in patients with coronary heart disease. *Circulation* 1979; 60:520-530.
 119. Wilson, RA, Sullivan PJ, Moore RH, et al. An ambulatory ventricular function monitor: validation and preliminary results. *Am J Cardiol* 1983; 52:601-606.
 120. Tamaki N, Gill JB, Moore RH, et al. Cardiac response to daily activities and exercise in normal subjects assessed by an ambulatory ventricular function monitor. *Am J Cardiol*: in press.
 121. Tamaki N, Yasuda T, Leinbach RC, et al. Spontaneous changes in regional wall motion abnormalities in acute myocardial infarction. *Am J Cardiol* 1986; 58:406-410.
 122. Kayden DS, Wackers FJ, Francis CK, Zaret BL. Silent left ventricular dysfunction during ambulatory radionuclide monitoring following thrombolysis: a potential predictor of subsequent cardiac morbidity. *J Am Coll Cardiol* 1988; 11:25A.